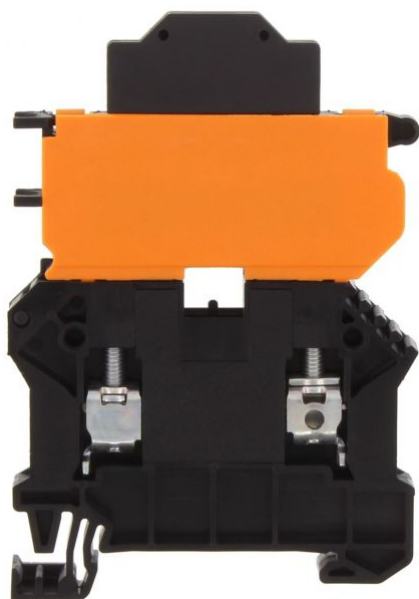


17176.4

SSIK 6/2A/LED 30-60V AC/DC BK

SSIK 6/2A/LED 30-60V AC/DC BK



Fuse-disconnect terminal, Screw connection, Mounting type: Mounting rail TS 35/7.5, Rated cross-section: 6 mm<sup>2</sup>, Width: 8.1 mm, Colour: Black

## Business data

Product description	Fuse-disconnect terminal
Packaging unit	50
Quantity unit	PC
Weight per piece (not including packaging)	25.3
Weight per piece (including packaging)	26.38
Unit of weight	G
Customs number	85369010
Country of origin	DE

17176.4

SSIK 6/2A/LED 30-60V AC/DC BK

SSIK 6/2A/LED 30-60V AC/DC BK

## Technical Data

---

### Dimensions

---

Length	59 mm
Width	8.1 mm
Height TS 35/7.5	84 mm

### Ratings

---

Rated voltage (determined by the illuminated display and fuse being used)	60 V
Rated current (as fuse-disconnect terminal)	10 A
Rated cross-section	6 mm <sup>2</sup>
Rated impulse voltage	6 kV
Overvoltage category	III
Contamination degree	3

17176.4

SSIK 6/2A/LED 30-60V AC/DC BK

SSIK 6/2A/LED 30-60V AC/DC BK

## Technical Data

---

### Connection data

Connection principle	Screw connection
Connection position	Lateral
Connections	2 / extraction lever
Number of terminals per level	2
Number of levels	1
Wire cross-section single-core (rigid) / stranded, min.	0.2 mm <sup>2</sup>
Wire cross-section single core (rigid)/stranded, max.	10 mm <sup>2</sup>
Wire cross-section stranded, min.	0.2 mm <sup>2</sup>
Wire cross-section stranded, max.	10 mm <sup>2</sup>
Wire cross-section stranded with wire-end ferrules, min.	0.2 mm <sup>2</sup>
Wire cross-section stranded with wire-end ferrules, max.	6 mm <sup>2</sup>
Wire cross-section AWG, min.	22
Wire cross-section AWG, max.	8
Stripping length	10 mm
Screw head	Slotted
Screw threading	M 3,5
Tightening torque, min.	0.8 Nm
Tightening torque, max.	1.6 Nm

17176.4

**SSIK 6/2A/LED 30-60V AC/DC BK**

**SSIK 6/2A/LED 30-60V AC/DC BK**

## Technical Data

---

### Materials

Insulation housing	Polyamide 6.6
Glass-fibre reinforced	✓
Flammability class UL 94	V-0
Working temperature, min.	-40 °C
Working temperature, max.	140 °C

17176.4

**SSIK 6/2A/LED 30-60V AC/DC BK**

**SSIK 6/2A/LED 30-60V AC/DC BK**

## Technical Data

---

### Further technical data

---

Mounting type	Mounting rail TS 35/7,5
Fuse size	6,3 x 25 / 6,3 x 32 mm
Gauge plug acc. to EN 60 947-1	A5
Number of cross-connection channels	2
End plate required	✓
Voltage fuse	250 V
Voltage illuminated display	30-60 V
Cross-current via illuminated display	< 5 mA
Power loss in singular arrangement - overload and short-circuit protection, max.	2,5 / 2,5 W / A
Power loss in compound arrangement - overload and short-circuit protection, max.	2,5 / 2,5 W / A
Power loss in singular arrangement - only short-circuit protection, max.	4 / 10 W / A
Power loss in compound arrangement - only short-circuit protection, max.	2,5 / 2,5 W / A
Version of fuse holder	Swivelling
Type of display element (defect display)	LED
Version of fuse cartridge	G fuse 6.3 x 25 / 6.3 x 32
Supply voltage (defect display), min.	30
Supply voltage (defect display), max.	60
Type of voltage (defect display)	AC/DC

17176.4

**SSIK 6/2A/LED 30-60V AC/DC BK**

**SSIK 6/2A/LED 30-60V AC/DC BK**

## Approvals

---

### CSA approval

---

CSA approval	C22.2 No 158
--------------	--------------

CSA approval granted	✓
----------------------	---

CSA Usegroup C: rated voltage	600 V
-------------------------------	-------

CSA Usegroup C: rated current	10 A
-------------------------------	------

CSA wire cross-section AWG, min.	22
----------------------------------	----

CSA wire cross-section AWG, max.	8
----------------------------------	---

CSA stripping length	10 mm
----------------------	-------

CSA torque, max.	16 Nm
------------------	-------

CSA torque, min.	8 Nm
------------------	------

### CSAus approval

---

CSAus approval	UL 1059
----------------	---------

CSAus approval granted	✓
------------------------	---

CSAus Usegroup C: rated voltage	600 V
---------------------------------	-------

CSAus Usegroup C: rated current	10 A
---------------------------------	------

CSAus wire cross-section AWG, min.	22
------------------------------------	----

CSAus wire cross-section AWG, max.	8
------------------------------------	---

CSAus stripping length	10 mm
------------------------	-------

CSAus torque, min.	0.8 Nm
--------------------	--------

17176.4

**SSIK 6/2A/LED 30-60V AC/DC BK**

**SSIK 6/2A/LED 30-60V AC/DC BK**

## Approvals

---

### CSAus approval

---

CSAus torque, max.	1.6 Nm
--------------------	--------

---

### KEMA KEUR approval

---

KEMA KEUR approval	EN 60947-7-3
--------------------	--------------

---

KEMA KEUR approval granted	✓
----------------------------	---

---

KEMA rated voltage	60 V
--------------------	------

---

KEMA voltage fuse, max.	250 V
-------------------------	-------

---

KEMA rated current	10 A
--------------------	------

---

KEMA rated impulse voltage	6 kV
----------------------------	------

---

KEMA wire cross-section single core (rigid), min.	0.2 mm <sup>2</sup>
---	---------------------

---

KEMA wire cross-section single-core (rigid), max.	10 mm <sup>2</sup>
---	--------------------

---

KEMA wire cross-section stranded, min.	0.2 mm <sup>2</sup>
--	---------------------

---

KEMA wire cross-section stranded, max.	10 mm <sup>2</sup>
--	--------------------

---

KEMA stripping length	10 mm
-----------------------	-------

---

KEMA torque, min.	1.2 Nm
-------------------	--------

---

KEMA torque, max.	2 Nm
-------------------	------

---

KEMA fuse size	6,3 x 25 / 6,3 x 32 mm
----------------	------------------------

---

KEMA power loss in singular arrangement - overload and short-circuit protection, max.	2,5 / 2,5 W / A
---	-----------------

---

KEMA power loss in compound arrangement - overload and short-circuit protection, max.	2,5 / 2,5 W / A
---	-----------------

---

17176.4

SSIK 6/2A/LED 30-60V AC/DC BK

SSIK 6/2A/LED 30-60V AC/DC BK

## Approvals

---

### KEMA KEUR approval

---

KEMA power loss in singular arrangement - only short-circuit protection, max. 4 / 10 W / A

KEMA power loss in compound arrangement - only short-circuit protection, max. 2,5 / 2,5 W / A

### UL Recognized

---

UL Recognized UL 1059

UL Recognized granted ✓

UL Usegroup B: rated voltage 600 V

UL Usegroup B: rated current 10 A

UL Usegroup C: rated voltage 600 V

UL Usegroup C: rated current 10 A

UL Usegroup D: rated voltage 600 V

UL Usegroup D: rated current 10 A

UL wire cross-section single-core (rigid) AWG, min. 22

UL wire cross-section single-core (rigid) AWG, max. 8

UL wire cross-section stranded AWG, min. 22

UL wire cross-section stranded AWG, max. 8

UL torque, min. 7.08 Lb In.

UL torque, max. 14.16 Lb In.

UL wire material Cu



17176.4

SSIK 6/2A/LED 30-60V AC/DC BK

SSIK 6/2A/LED 30-60V AC/DC BK

## Approvals

---

### UL Recognized

---

UL factory wiring

✓

UL field wiring

✓

---

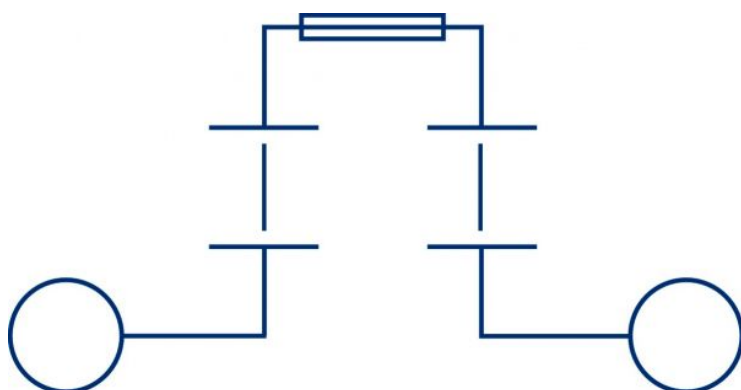
17176.4

SSIK 6/2A/LED 30-60V AC/DC BK

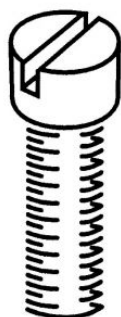
SSIK 6/2A/LED 30-60V AC/DC BK

## Media

---



**M3.5**



17176.4

SSIK 6/2A/LED 30-60V AC/DC BK

SSIK 6/2A/LED 30-60V AC/DC BK

## Accessories

---

### Measurement pick-off terminal

---



Measurement pick-off terminal, Screw connection, Mounting type: On base, Rated cross-section: 4 mm<sup>2</sup>, Width: 6.6 mm, Colour: Beige

### In general

Order number	Article designation	GTIN (EAN)	Packaging unit
17121.2	SMAG 6/4	4044211172114	10 PC

---

### End plate

---



End plate, Width: 1.5 mm, Colour: Black

### In general

Order number	Article designation	GTIN (EAN)	Packaging unit
17258.4	SAP SSIK 4/6	4044211179830	20 PC

---

17176.4

SSIK 6/2A/LED 30-60V AC/DC BK

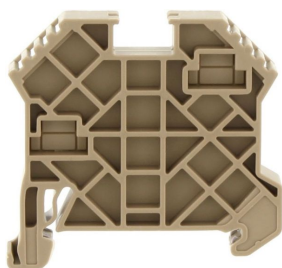
SSIK 6/2A/LED 30-60V AC/DC BK

## Accessories

---

### End bracket

---



End stop, Mounting type: Mounting rail TS 35/7.5 and TS 35/15, Width: 8 mm, Colour: Beige

### In general

Order number	Article designation	GTIN (EAN)	Packaging unit
17250.2	SES 35	4044211178253	50 PC

---

### Insulating cover for cross-connector

---



Insulating cap, Colour: Yellow

### In general

Order number	Article designation	GTIN (EAN)	Packaging unit
17200.8	SQIK 2,5-10	4044211148539	20 PC

---

17176.4

SSIK 6/2A/LED 30-60V AC/DC BK

SSIK 6/2A/LED 30-60V AC/DC BK

## Accessories

---

### Insulated cross connector

---



Insulated cross-connector, No. of poles: 10, Mounting type: Plug in, Width: 79.1 mm, Rated cross-section: 6 mm<sup>2</sup>, Colour: Yellow

### In general

Order number	Article designation	GTIN (EAN)	Packaging unit
17229.8	SQI 6/10	4044211148829	10 PC

---



Insulated cross-connector, No. of poles: 2, Mounting type: Plug in, Width: 14.3 mm, Rated cross-section: 6 mm<sup>2</sup>, Colour: Yellow

### In general

Order number	Article designation	GTIN (EAN)	Packaging unit
17221.8	SQI 6/2	4044211148744	50 PC

---

17176.4

**SSIK 6/2A/LED 30-60V AC/DC BK**

**SSIK 6/2A/LED 30-60V AC/DC BK**

## Accessories

---

### Insulated cross connector

---



Insulated cross-connector, No. of poles: 3, Mounting type: Plug in, Width: 22.4 mm, Rated cross-section: 6 mm<sup>2</sup>, Colour: Yellow

### In general

Order number	Article designation	GTIN (EAN)	Packaging unit
17222.8	SQI 6/3	4044211148751	50 PC



Insulated cross-connector, No. of poles: 30, Mounting type: Plug in, Width: 240 mm, Rated cross-section: 6 mm<sup>2</sup>, Colour: Yellow

### In general

Order number	Article designation	GTIN (EAN)	Packaging unit
17230.8	SQI 6/30	4044211148836	5 PC

17176.4

SSIK 6/2A/LED 30-60V AC/DC BK

SSIK 6/2A/LED 30-60V AC/DC BK

## Accessories

---

### Insulated cross connector

---



Insulated cross-connector, No. of poles: 4, Mounting type: Plug in, Width: 30.5 mm, Rated cross-section: 6 mm<sup>2</sup>, Colour: Yellow

### In general

Order number	Article designation	GTIN (EAN)	Packaging unit
17223.8	SQI 6/4	4044211148768	20 PC

---



Insulated cross-connector, No. of poles: 5, Mounting type: Plug in, Width: 38.6 mm, Rated cross-section: 6 mm<sup>2</sup>, Colour: Yellow

### In general

Order number	Article designation	GTIN (EAN)	Packaging unit
17224.8	SQI 6/5	4044211148775	20 PC

---

17176.4

SSIK 6/2A/LED 30-60V AC/DC BK

SSIK 6/2A/LED 30-60V AC/DC BK

## Accessories

---

### Insulated cross connector

---



Insulated cross-connector, No. of poles: 6, Mounting type: Plug in, Width: 46.7 mm, Rated cross-section: 6 mm<sup>2</sup>, Colour: Yellow

### In general

Order number	Article designation	GTIN (EAN)	Packaging unit
17225.8	SQI 6/6	4044211148782	20 PC

---



Insulated cross-connector, No. of poles: 7, Mounting type: Plug in, Width: 54.8 mm, Rated cross-section: 6 mm<sup>2</sup>, Colour: Yellow

### In general

Order number	Article designation	GTIN (EAN)	Packaging unit
17226.8	SQI 6/7	4044211148799	20 PC

---



17176.4

**SSIK 6/2A/LED 30-60V AC/DC BK**

**SSIK 6/2A/LED 30-60V AC/DC BK**

## Accessories

---

### Insulated cross connector

---



Insulated cross-connector, No. of poles: 8, Mounting type: Plug in, Width: 62.9 mm, Rated cross-section: 6 mm<sup>2</sup>, Colour: Yellow

### In general

Order number	Article designation	GTIN (EAN)	Packaging unit
17227.8	SQI 6/8	4044211148805	10 PC

---



Insulated cross-connector, No. of poles: 9, Mounting type: Plug in, Width: 71 mm, Rated cross-section: 6 mm<sup>2</sup>, Colour: Yellow

### In general

Order number	Article designation	GTIN (EAN)	Packaging unit
17228.8	SQI 6/9	4044211148812	10 PC

---

17176.4

SSIK 6/2A/LED 30-60V AC/DC BK

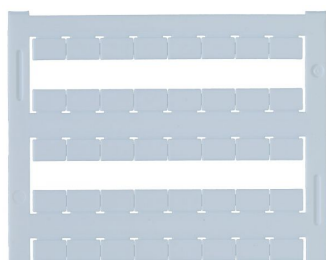
SSIK 6/2A/LED 30-60V AC/DC BK

## Accessories

---

### Quick-marking

---



Terminal marker / Pocket Maxicard, Length: 5 mm,  
Width: 8 mm, Colour: White

### In general

Order number	Article designation	GTIN (EAN)	Packaging unit
9323.7	PMC SB 8/40 WH	4044211129231	400 PC

---

### Screw driver

---



Screwdriver with bare blade, Colour: Black-grey

### In general

Order number	Article designation	GTIN (EAN)	Packaging unit
1087.0	SDB 0,8x4,0	4044211014803	1 PC

---

17176.4

SSIK 6/2A/LED 30-60V AC/DC BK

SSIK 6/2A/LED 30-60V AC/DC BK

## Accessories

---

### Connection sleeve

---



Connecting sleeve, Colour: Orange

---

### In general

Order number	Article designation	GTIN (EAN)	Packaging unit
2875.3	VBS 2/10/Z	4044211056001	20 PC

---



Connecting sleeve, Colour: Orange

---

### In general

Order number	Article designation	GTIN (EAN)	Packaging unit
2876.3	VBS 3/10/Z	4044211056018	20 PC

---