

2158.8

BKA 4/1 YE

BKA 4/1 YE



Feed-through terminal for direct mount, Screw connection, Mounting type: Mounting surface, Rated cross-section: 4 mm², Width: 6 mm, Colour: Yellow

Business data

Product description	Feed-through terminal for direct mount
Packaging unit	100
Quantity unit	PC
Weight per piece (not including packaging)	4.4
Weight per piece (including packaging)	4.76
Unit of weight	G
Customs number	85369010
Country of origin	DE

2158.8

BKA 4/1 YE

BKA 4/1 YE

Technical Data

Dimensions

Length	22 mm
Width	6 mm
Height	23 mm
Pitch	6 mm

Ratings

Rated voltage	400 V
Rated current	32 A
Rated cross-section	4 mm ²
Rated impulse voltage	6 kV
Overvoltage category	III
Contamination degree	3

2158.8

BKA 4/1 YE

BKA 4/1 YE

Technical Data

Connection data

Connection principle	Screw connection
Connection position	Lateral
Connections	2
Number of terminals per level	2
Number of levels	1
Wire cross-section single-core (rigid) / stranded, min.	0.2 mm ²
Wire cross-section single core (rigid)/stranded, max.	4 mm ²
Wire cross-section stranded, min.	0.2 mm ²
Wire cross-section stranded, max.	4 mm ²
Wire cross-section stranded with wire-end ferrules, min.	0.2 mm ²
Wire cross-section stranded with wire-end ferrules, max.	4 mm ²
Wire cross-section AWG, min.	22
Wire cross-section AWG, max.	12
Stripping length	9 mm
Screw head	Slotted
Screw threading	M 3
Tightening torque, min.	0.5 Nm
Tightening torque, max.	1 Nm

2158.8

BKA 4/1 YE

BKA 4/1 YE

Technical Data

Materials

Insulation housing	Polyamide 6.6
Flammability class UL 94	V-2
Working temperature, min.	-40 °C
Working temperature, max.	105 °C

Further technical data

Mounting type	Mounting face
Gauge plug acc. to EN 60 947-1	A3
End plate required	✓

2158.8

BKA 4/1 YE

BKA 4/1 YE

Approvals

Standards and regulations

EAC approval	TR ZU 004/2011
--------------	----------------

EAC approval granted	✓
----------------------	---

CSA approval

CSA approval	C22.2 No 158
--------------	--------------

CSA approval granted	✓
----------------------	---

CSA Usegroup C: rated voltage	300 V
-------------------------------	-------

CSA Usegroup C: rated current	25 A
-------------------------------	------

CSA wire cross-section AWG, min.	22
----------------------------------	----

CSA wire cross-section AWG, max.	12
----------------------------------	----

CSA stripping length	9 mm
----------------------	------

CSA torque, max.	1 Nm
------------------	------

CSA torque, min.	0.5 Nm
------------------	--------

2158.8

BKA 4/1 YE

BKA 4/1 YE

Approvals

KEMA KEUR approval

KEMA KEUR approval	EN 60947-7-1
KEMA KEUR approval granted	✓
KEMA rated voltage	400 V
KEMA rated current	32 A
KEMA rated impulse voltage	6 kV
KEMA wire cross-section single core (rigid), min.	0.2 mm ²
KEMA wire cross-section single-core (rigid), max.	4 mm ²
KEMA wire cross-section stranded, min.	0.2 mm ²
KEMA wire cross-section stranded, max.	4 mm ²

2158.8

BKA 4/1 YE

BKA 4/1 YE

Approvals

UL Recognized

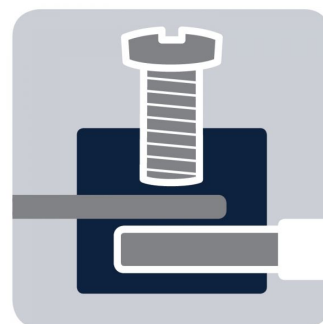
UL Recognized	UL 1059
UL Recognized granted	✓
UL Usegroup B: rated voltage	300 V
UL Usegroup B: rated current	30 A
UL Usegroup C: rated voltage	300 V
UL Usegroup C: rated current	30 A
UL wire cross-section single-core (rigid) AWG, min.	22
UL wire cross-section single-core (rigid) AWG, max.	10
UL wire cross-section stranded AWG, min.	22
UL wire cross-section stranded AWG, max.	10
UL torque	7 Lb In
UL wire material	Cu
UL factory wiring	✓
UL field wiring	✓

2158.8

BKA 4/1 YE

BKA 4/1 YE

Media



M3



EAC



2158.8

BKA 4/1 YE

BKA 4/1 YE

Media



2158.8

BKA 4/1 YE

BKA 4/1 YE

Accessories

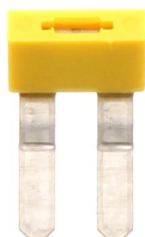
External insulated cross-connector



External insulated cross-connector, No. of poles: 10, Mounting type: Plug in, Width: 59.6 mm, Rated current: 27 A; Colour: Yellow

In general

Order number	Article designation	GTIN (EAN)	Packaging unit
2141.0	AQI 10/6/11	4044211049621	10 PC



External insulated cross-connector, No. of poles: 2, Mounting type: Plug in, Width: 10.8 mm, Rated current: 27 A; Colour: Yellow

In general

Order number	Article designation	GTIN (EAN)	Packaging unit
2125.0	AQI 2/6/11	4044211049447	50 PC

2158.8

BKA 4/1 YE

BKA 4/1 YE

Accessories

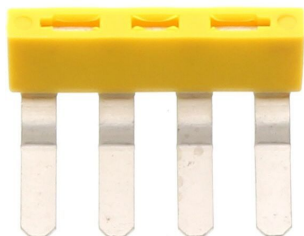
External insulated cross-connector



External insulated cross-connector, No. of poles: 3,
Mounting type: Plug in, Width: 16.9 mm, Rated
current: 27 A; Colour: Yellow

In general

Order number	Article designation	GTIN (EAN)	Packaging unit
2126.0	AQI 3/6/11	4044211049454	50 PC



External insulated cross-connector, No. of poles: 4,
Mounting type: Plug in, Width: 23 mm, Rated current:
27 A; Colour: Yellow

In general

Order number	Article designation	GTIN (EAN)	Packaging unit
2140.0	AQI 4/6/11	4044211049614	50 PC

2158.8

BKA 4/1 YE

BKA 4/1 YE

Accessories

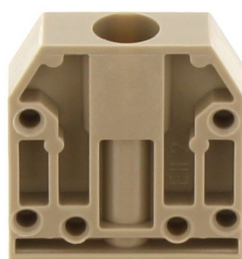
End holder



End support, Mounting type: Mounting rail TS 15/5.5,
Width: 9 mm, Colour: Beige

In general

Order number	Article designation	GTIN (EAN)	Packaging unit
2945.2	EH 15	4044211056728	50 PC



End support, Mounting type: Mounting surface, Width:
7 mm, Colour: Beige

In general

Order number	Article designation	GTIN (EAN)	Packaging unit
2136.2	EH 2	4044211049553	50 PC

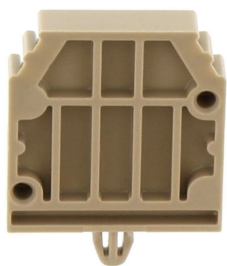
2158.8

BKA 4/1 YE

BKA 4/1 YE

Accessories

End holder

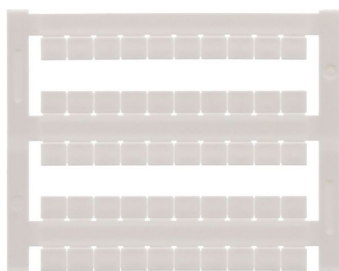


End support, Mounting type: Mounting surface, Width: 5 mm, Colour: Beige

In general

Order number	Article designation	GTIN (EAN)	Packaging unit
2147.2	EH 2/Z	4044211049683	50 PC

Quick-marking



Terminal marker / Pocket Maxicard, Length: 5 mm, Width: 6 mm, Colour: White

In general

Order number	Article designation	GTIN (EAN)	Packaging unit
4702.7	PMC SB 6/50 WH	4044211089986	500 PC

2158.8

BKA 4/1 YE

BKA 4/1 YE

Accessories

Screw driver



Screwdriver with bare blade, Colour: Black-grey

In general

Order number	Article designation	GTIN (EAN)	Packaging unit
1086.0	SDB 0,6x3,5	4044211014797	1 PC
