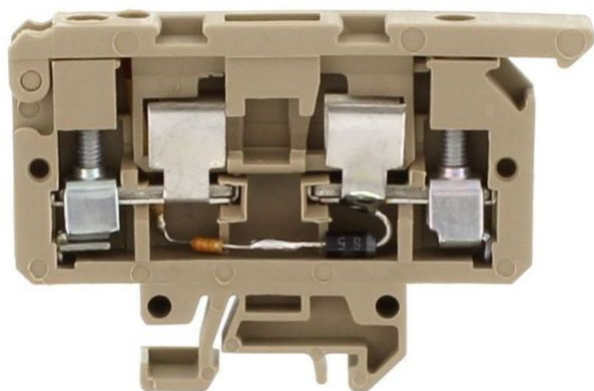


2464.2

STK 1/15/LED(RD)/24V AC BG

STK 1/15/LED(RD)/24V AC BG



Fuse-disconnect terminal, Screw connection, Mounting type: Mounting rail TS 15/5.5, Rated cross-section: 4 mm<sup>2</sup>, Width: 8 mm, Colour: Beige

## Business data

Product description	Fuse-disconnect terminal
Packaging unit	100
Quantity unit	PC
Weight per piece (not including packaging)	12.8
Weight per piece (including packaging)	14.18
Unit of weight	G
Customs number	85369010
Country of origin	DE

**2464.2**

**STK 1/15/LED(RD)/24V AC BG**

**STK 1/15/LED(RD)/24V AC BG**

## Technical Data

---

### Dimensions

---

Length	57.5 mm
Width	8 mm
Height TS 15/5.5	38.5 mm

### Ratings

---

Rated voltage (determined by the illuminated display and fuse being used)	24 AC V
Rated current (as fuse-disconnect terminal)	6,3 A
Rated cross-section	4 mm <sup>2</sup>
Overvoltage category	III
Contamination degree	3

**2464.2**

**STK 1/15/LED(RD)/24V AC BG**

**STK 1/15/LED(RD)/24V AC BG**

## Technical Data

---

### Connection data

Connection principle	Screw connection
Connection position	Lateral
Connections	2 / extraction lever
Number of terminals per level	2
Number of levels	1
Wire cross-section single-core (rigid) / stranded, min.	0.2 mm <sup>2</sup>
Wire cross-section single core (rigid)/stranded, max.	4 mm <sup>2</sup>
Wire cross-section stranded, min.	0.2 mm <sup>2</sup>
Wire cross-section stranded, max.	4 mm <sup>2</sup>
Wire cross-section stranded with wire-end ferrules, min.	0.2 mm <sup>2</sup>
Wire cross-section stranded with wire-end ferrules, max.	4 mm <sup>2</sup>
Wire cross-section AWG, min.	22
Wire cross-section AWG, max.	12
Stripping length	9 mm
Screw head	Slotted
Screw threading	M 3
Tightening torque, min.	0.5 Nm
Tightening torque, max.	1 Nm

2464.2

STK 1/15/LED(RD)/24V AC BG

STK 1/15/LED(RD)/24V AC BG

## Technical Data

---

### Materials

Insulation housing	Polyamide 6.6
Flammability class UL 94	V-2
Working temperature, min.	-40 °C
Working temperature, max.	105 °C

### Further technical data

Mounting type	TS 15
Fuse size	5 x 20 / 5 x 25 mm
Gauge plug acc. to EN 60 947-1	A4
End plate required	✓
Voltage fuse	250 V
Voltage illuminated display	24 AC V
Cross-current via illuminated display	< 5 mA
Version of fuse holder	Swivelling
Type of display element (defect display)	LED
Version of fuse cartridge	G fuse 5 x 20 / 5 x 25
Supply voltage (defect display), max.	24
Type of voltage (defect display)	AC
Colour of lamp	Red

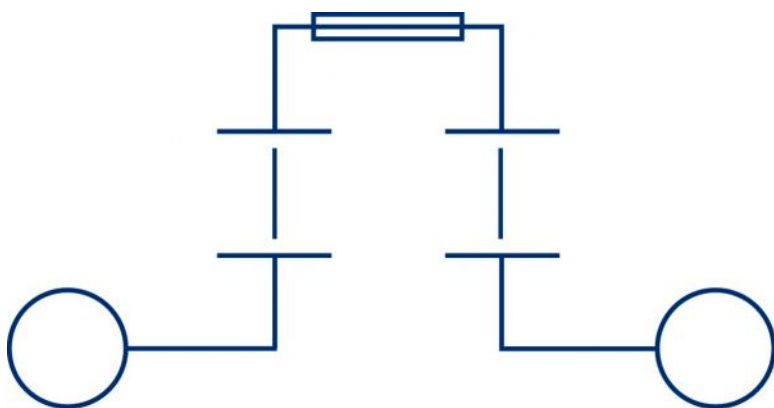
2464.2

STK 1/15/LED(RD)/24V AC BG

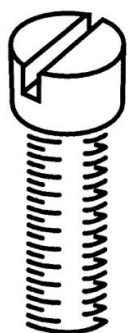
STK 1/15/LED(RD)/24V AC BG

Media

---



**M3**



2464.2

STK 1/15/LED(RD)/24V AC BG

STK 1/15/LED(RD)/24V AC BG

## Accessories

---

### End plate

---



End plate, Width: 1.5 mm, Colour: Beige

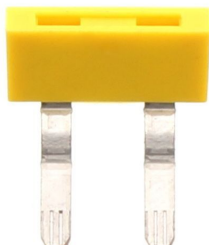
### In general

Order number	Article designation	GTIN (EAN)	Packaging unit
2046.2	AP SI-1	4044211048518	50 PC

---

### External insulated cross-connector

---



External insulated cross-connector, No. of poles: 2, Mounting type: Plug in, Width: 16.1 mm, Rated current: 27 A; Colour: Yellow

### In general

Order number	Article designation	GTIN (EAN)	Packaging unit
2067.0	AQI 2/8/11	4044211048730	50 PC

---

2464.2

STK 1/15/LED(RD)/24V AC BG

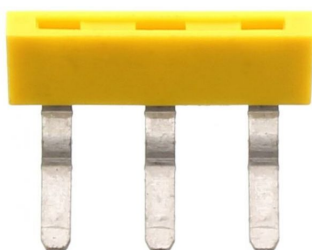
STK 1/15/LED(RD)/24V AC BG

## Accessories

---

### External insulated cross-connector

---

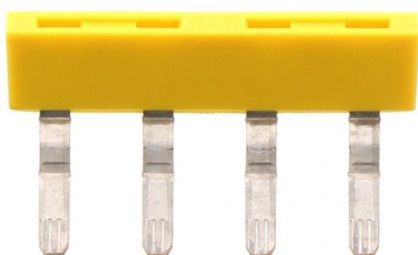


External insulated cross-connector, No. of poles: 3,  
Mounting type: Plug in, Width: 24.2 mm, Rated  
current: 27 A; Colour: Yellow

### In general

Order number	Article designation	GTIN (EAN)	Packaging unit
2068.0	AQI 3/8/11	4044211048747	50 PC

---



External insulated cross-connector, No. of poles: 4,  
Mounting type: Plug in, Width: 32.3 mm, Rated  
current: 27 A; Colour: Yellow

### In general

Order number	Article designation	GTIN (EAN)	Packaging unit
2069.0	AQI 4/8/11	4044211048754	50 PC

---

2464.2

STK 1/15/LED(RD)/24V AC BG

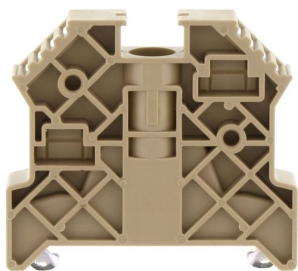
STK 1/15/LED(RD)/24V AC BG

## Accessories

---

### End bracket

---



End stop, Mounting type: Mounting rail TS 35/7.5,  
Width: 9.5 mm, Colour: Beige

### In general

Order number	Article designation	GTIN (EAN)	Packaging unit
2828.0	ES 35/K/ST	4044211055547	50 PC

---

### Contact sleeve

---



Solid link, Colour: natural

### In general

Order number	Article designation	GTIN (EAN)	Packaging unit
2470.0	KH 5	4044211052607	100 PC

---



2464.2

STK 1/15/LED(RD)/24V AC BG

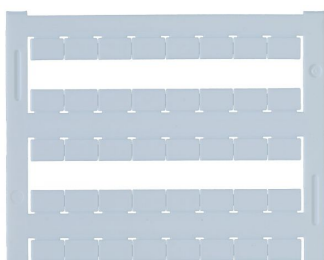
STK 1/15/LED(RD)/24V AC BG

## Accessories

---

## Quick-marking

---



Terminal marker / Pocket Maxicard, Length: 5 mm,  
Width: 8 mm, Colour: White

## In general

Order number	Article designation	GTIN (EAN)	Packaging unit
9323.7	PMC SB 8/40 WH	4044211129231	400 PC

## Screw driver

---



Screwdriver with bare blade, Colour: Black-grey

## In general

Order number	Article designation	GTIN (EAN)	Packaging unit
1086.0	SDB 0,6x3,5	4044211014797	1 PC

2464.2

STK 1/15/LED(RD)/24V AC BG

STK 1/15/LED(RD)/24V AC BG

## Accessories

---

### Connection piece

---



Connecting sleeve, Colour: Orange

---

### In general

Order number	Article designation	GTIN (EAN)	Packaging unit
2873.3	VBS 2/10	4044211055981	20 PC

---



Connecting sleeve, Colour: Orange

---

### In general

Order number	Article designation	GTIN (EAN)	Packaging unit
2874.3	VBS 3/10	4044211055998	20 PC

---