

28517.4

KDS-Inlay 2 BK

KDS-Inlay 2 BK

---



Cable entry, Inlay, Mounting type: Plug in, IP 66, Colour: Black

RAL: 9005

## Business data

---

Product description	Cable Entry
Packaging unit	5
Quantity unit	PC
Weight per piece (not including packaging)	3.9
Weight per piece (including packaging)	4.3
Unit of weight	G
Customs number	39259020
Country of origin	DE

**28517.4**

**KDS-Inlay 2 BK**

**KDS-Inlay 2 BK**

## Technical Data

---

### Dimensions

---

Length	25 mm
Width	45 mm
Height	17.7 mm
Installation height	17.7 mm

### Materials

---

Material	Polyamide 6.6
Glass-fibre reinforced	✓
Flammability class UL 94	V-0
Working temperature, min.	-40 °C
Working temperature, max.	120 °C
Sealing material	TPE
Halogen-free	✓
Silicone-free	✓

### Further technical data

---

Mounting type	Plug in
Protection	IP66

28517.4

KDS-Inlay 2 BK

KDS-Inlay 2 BK

## Approvals

---

### cUL Recognized

---

cUL Recognized	C22.2 No. 14-95
----------------	-----------------

cUL Recognized	✓
----------------	---

### UL Recognized

---

UL Recognized	UL 508
---------------	--------

UL Recognized granted	✓
-----------------------	---

28517.4

KDS-Inlay 2 BK

KDS-Inlay 2 BK

Media

---



28517.4

KDS-Inlay 2 BK

KDS-Inlay 2 BK

## Accessories

---

### Actuating tool

---



Actuating tool, Material: Polyamide

### In general

Order number	Article designation	GTIN (EAN)	Packaging unit
28622.0	KDS BW 1	4044211216597	1 PC

---

### Dichtelemente klein

---



Seal, Mounting type: Plug in, Length x width: 42.8 mm,  
Max. cable diameter: 15 mm, IP 66, Colour: Black

### In general

Order number	Article designation	GTIN (EAN)	Packaging unit
28535.4	KDS-DEG 14-15	4044211209995	10 PC

---

28517.4

KDS-Inlay 2 BK

KDS-Inlay 2 BK

## Accessories

---

### Dichtelemente klein

---



Seal, Mounting type: Plug in, Length x width: 42.8 mm,  
Max. cable diameter: 21 mm, IP 66, Colour: Black

---

### In general

Order number	Article designation	GTIN (EAN)	Packaging unit
28541.4	KDS-DEG 20-21	4044211215378	10 PC

---



Seal, Mounting type: Plug in, Length x width: 42.8 mm,  
Max. cable diameter: 23 mm, IP 66, Colour: Black

---

### In general

Order number	Article designation	GTIN (EAN)	Packaging unit
28543.4	KDS-DEG 22-23	4044211215415	10 PC

---

28517.4

KDS-Inlay 2 BK

KDS-Inlay 2 BK

## Accessories

---

### Dichtelemente klein

---



Seal, Mounting type: Plug in, Length x width: 42.8 mm, Max. cable diameter: 32 mm, IP 66, Colour: Black

---

### In general

Order number	Article designation	GTIN (EAN)	Packaging unit
28552.4	KDS-DEG 31-32	4044211215590	10 PC

---



Seal dummy, Mounting type: Plug in, Length x width: 42.8 mm, IP 66, Colour: Black

---

### In general

Order number	Article designation	GTIN (EAN)	Packaging unit
28534.4	KDS-DEG/B	4044211215255	10 PC

---

28517.4

KDS-Inlay 2 BK

KDS-Inlay 2 BK

## Accessories

---

### Dichtelemente klein

---



Seal, Mounting type: Plug in, Length x width: 42.8 mm, Max. cable diameter: 16 mm, IP 66, Colour: Black

---

### In general

Order number	Article designation	GTIN (EAN)	Packaging unit
28536.4	KDS-DEG 15-16	4044211215279	10 PC

---



Seal, Mounting type: Plug in, Length x width: 42.8 mm, Max. cable diameter: 20 mm, IP 66, Colour: Black

---

### In general

Order number	Article designation	GTIN (EAN)	Packaging unit
28540.4	KDS-DEG 19-20	4044211215354	10 PC

---



28517.4

KDS-Inlay 2 BK

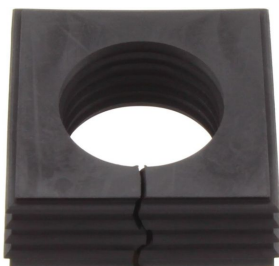
KDS-Inlay 2 BK

## Accessories

---

### Dichtelemente klein

---



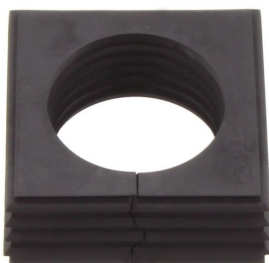
Seal, Mounting type: Plug in, Length x width: 42.8 mm, Max. cable diameter: 27 mm, IP 66, Colour: Black

---

### In general

Order number	Article designation	GTIN (EAN)	Packaging unit
28547.4	KDS-DEG 26-27	4044211215491	10 PC

---



Seal, Mounting type: Plug in, Length x width: 42.8 mm, Max. cable diameter: 30 mm, IP 66, Colour: Black

---

### In general

Order number	Article designation	GTIN (EAN)	Packaging unit
28550.4	KDS-DEG 29-30	4044211215552	10 PC

---

28517.4

KDS-Inlay 2 BK

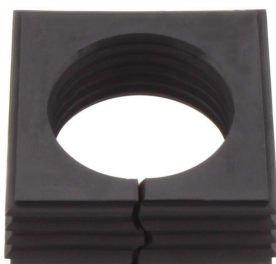
KDS-Inlay 2 BK

## Accessories

---

### Dichtelemente klein

---



Seal, Mounting type: Plug in, Length x width: 42.8 mm, Max. cable diameter: 31 mm, IP 66, Colour: Black

---

### In general

Order number	Article designation	GTIN (EAN)	Packaging unit
28551.4	KDS-DEG 30-31	4044211215576	10 PC

---



Seal, Mounting type: Plug in, Length x width: 42.8 mm, Max. cable diameter: 17 mm, IP 66, Colour: Black

---

### In general

Order number	Article designation	GTIN (EAN)	Packaging unit
28537.4	KDS-DEG 16-17	4044211215293	10 PC

---

28517.4

KDS-Inlay 2 BK

KDS-Inlay 2 BK

## Accessories

---

### Dichtelemente klein

---



Seal, Mounting type: Plug in, Length x width: 42.8 mm,  
Max. cable diameter: 24 mm, IP 66, Colour: Black

---

### In general

Order number	Article designation	GTIN (EAN)	Packaging unit
28544.4	KDS-DEG 23-24	4044211215439	10 PC

---



Seal, Mounting type: Plug in, Length x width: 42.8 mm,  
Max. cable diameter: 26 mm, IP 66, Colour: Black

---

### In general

Order number	Article designation	GTIN (EAN)	Packaging unit
28546.4	KDS-DEG 25-26	4044211215460	10 PC

---

28517.4

KDS-Inlay 2 BK

KDS-Inlay 2 BK

## Accessories

---

### Dichtelemente klein

---



Seal, Mounting type: Plug in, Length x width: 42.8 mm,  
Max. cable diameter: 34 mm, IP 66, Colour: Black

---

### In general

Order number	Article designation	GTIN (EAN)	Packaging unit
28554.4	KDS-DEG/K 15-34	4044211216108	10 PC

---



Seal, Mounting type: Plug in, Length x width: 42.8 mm,  
Max. cable diameter: 18 mm, IP 66, Colour: Black

---

### In general

Order number	Article designation	GTIN (EAN)	Packaging unit
28538.4	KDS-DEG 17-18	4044211215316	10 PC

---

28517.4

KDS-Inlay 2 BK

KDS-Inlay 2 BK

## Accessories

---

### Dichtelemente klein

---



Seal, Mounting type: Plug in, Length x width: 42.8 mm, Max. cable diameter: 19 mm, IP 66, Colour: Black

---

### In general

Order number	Article designation	GTIN (EAN)	Packaging unit
28539.4	KDS-DEG 18-19	4044211215330	10 PC

---



Seal, Mounting type: Plug in, Length x width: 42.8 mm, Max. cable diameter: 25 mm, IP 66, Colour: Black

---

### In general

Order number	Article designation	GTIN (EAN)	Packaging unit
28545.4	KDS-DEG 24-25	4044211215453	10 PC

---

28517.4

KDS-Inlay 2 BK

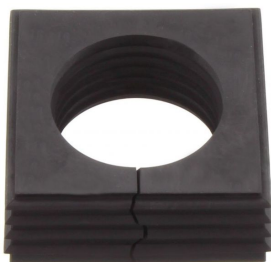
KDS-Inlay 2 BK

## Accessories

---

### Dichtelemente klein

---



Seal, Mounting type: Plug in, Length x width: 42.8 mm, Max. cable diameter: 29 mm, IP 66, Colour: Black

---

### In general

Order number	Article designation	GTIN (EAN)	Packaging unit
28549.4	KDS-DEG 28-29	4044211215538	10 PC

---



Seal, Mounting type: Plug in, Length x width: 42.8 mm, Max. cable diameter: 22 mm, IP 66, Colour: Black

---

### In general

Order number	Article designation	GTIN (EAN)	Packaging unit
28542.4	KDS-DEG 21-22	4044211215392	10 PC

---

28517.4

KDS-Inlay 2 BK

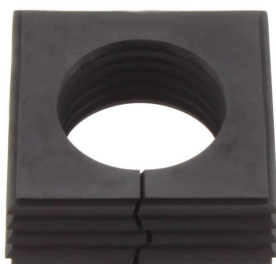
KDS-Inlay 2 BK

## Accessories

---

### Dichtelemente klein

---



Seal, Mounting type: Plug in, Length x width: 42.8 mm,  
Max. cable diameter: 28 mm, IP 66, Colour: Black

### In general

Order number	Article designation	GTIN (EAN)	Packaging unit
28548.4	KDS-DEG 27-28	4044211215514	10 PC

---



Seal, Mounting type: Plug in, Length x width: 20.3 mm,  
Max. cable diameter: 5 mm, IP 66, Colour: Black

### In general

Order number	Article designation	GTIN (EAN)	Packaging unit
28555.4	KDS-DE 2X4-5	4044211215620	10 PC

---

28517.4

KDS-Inlay 2 BK

KDS-Inlay 2 BK

## Accessories

---

### Dichtelemente klein

---



Seal, Mounting type: Plug in, Length x width: 20.3 mm, Max. cable diameter: 13 mm, IP 66, Colour: Black

---

### In general

Order number	Article designation	GTIN (EAN)	Packaging unit
28532.4	KDS-DE 12-13	4044211210984	10 PC

---



Seal, Mounting type: Plug in, Length x width: 20.3 mm, Max. cable diameter: 7 mm, IP 66, Colour: Black

---

### In general

Order number	Article designation	GTIN (EAN)	Packaging unit
28526.4	KDS-DE 6-7	4044211210922	10 PC

---



28517.4

KDS-Inlay 2 BK

KDS-Inlay 2 BK

## Accessories

---

### Dichtelemente klein

---



Seal, Mounting type: Plug in, Length x width: 20.3 mm, Max. cable diameter: 14 mm, IP 66, Colour: Black

---

### In general

Order number	Article designation	GTIN (EAN)	Packaging unit
28533.4	KDS-DE 13-14	4044211210991	10 PC

---



Seal, Mounting type: Plug in, Length x width: 20.3 mm, Max. cable diameter: 2 mm, IP 66, Colour: Black

---

### In general

Order number	Article designation	GTIN (EAN)	Packaging unit
28521.4	KDS-DE 1,5-2	4044211210007	10 PC

---

28517.4

KDS-Inlay 2 BK

KDS-Inlay 2 BK

## Accessories

---

### Dichtelemente klein

---



Seal, Mounting type: Plug in, Length x width: 20.3 mm, Max. cable diameter: 10 mm, IP 66, Colour: Black

---

### In general

Order number	Article designation	GTIN (EAN)	Packaging unit
28529.4	KDS-DE 9-10	4044211210953	10 PC

---



Seal dummy, Mounting type: Plug in, Length x width: 20.3 mm, IP 66, Colour: Black

---

### In general

Order number	Article designation	GTIN (EAN)	Packaging unit
28520.4	KDS-DE/B	4044211210878	10 PC

---

28517.4

KDS-Inlay 2 BK

KDS-Inlay 2 BK

## Accessories

---

### Dichtelemente klein

---



Seal, Mounting type: Plug in, Length x width: 20.3 mm,  
Max. cable diameter: 6 mm, IP 66, Colour: Black

---

### In general

Order number	Article designation	GTIN (EAN)	Packaging unit
28525.4	KDS-DE 5-6	4044211210915	10 PC

---



Seal, Mounting type: Plug in, Length x width: 20.3 mm,  
Max. cable diameter: 9 mm, IP 66, Colour: Black

---

### In general

Order number	Article designation	GTIN (EAN)	Packaging unit
28528.4	KDS-DE 8-9	4044211210946	10 PC

---

28517.4

KDS-Inlay 2 BK

KDS-Inlay 2 BK

## Accessories

---

### Dichtelemente klein

---



Seal, Mounting type: Plug in, Length x width: 20.3 mm,  
Max. cable diameter: 11 mm, IP 66, Colour: Black

---

### In general

Order number	Article designation	GTIN (EAN)	Packaging unit
28530.4	KDS-DE 10-11	4044211210960	10 PC

---



Seal, Mounting type: Plug in, Length x width: 20.3 mm,  
Max. cable diameter: 15 mm, IP 66, Colour: Black

---

### In general

Order number	Article designation	GTIN (EAN)	Packaging unit
28553.4	KDS-DE/K 2-15	4044211216092	10 PC

---

28517.4

KDS-Inlay 2 BK

KDS-Inlay 2 BK

## Accessories

---

### Dichtelemente klein

---



Seal, Mounting type: Plug in, Length x width: 20.3 mm,  
Max. cable diameter: 3 mm, IP 66, Colour: Black

### In general

Order number	Article designation	GTIN (EAN)	Packaging unit
28522.4	KDS-DE 2-3	4044211210885	10 PC

---



Seal, Mounting type: Plug in, Length x width: 20.3 mm,  
Max. cable diameter: 4 mm, IP 66, Colour: Black

### In general

Order number	Article designation	GTIN (EAN)	Packaging unit
28523.4	KDS-DE 3-4	4044211210892	10 PC

---

28517.4

KDS-Inlay 2 BK

KDS-Inlay 2 BK

## Accessories

---

### Dichtelemente klein

---



Seal, Mounting type: Plug in, Length x width: 20.3 mm,  
Max. cable diameter: 5 mm, IP 66, Colour: Black

---

### In general

Order number	Article designation	GTIN (EAN)	Packaging unit
28524.4	KDS-DE 4-5	4044211210908	10 PC

---



Seal, Mounting type: Plug in, Length x width: 20.3 mm,  
Max. cable diameter: 12 mm, IP 66, Colour: Black

---

### In general

Order number	Article designation	GTIN (EAN)	Packaging unit
28531.4	KDS-DE 11-12	4044211210977	10 PC

---

28517.4

KDS-Inlay 2 BK

KDS-Inlay 2 BK

## Accessories

---

### Dichtelemente klein

---



Seal, Mounting type: Plug in, Length x width: 20.3 mm, Max. cable diameter: 8 mm, IP 66, Colour: Black

### In general

Order number	Article designation	GTIN (EAN)	Packaging unit
28527.4	KDS-DE 7-8	4044211210939	10 PC

---

### Screw frame

---



Cable entry with foamed-in seal, Mounting type: Screws, Length: 153 mm, Width: 70 mm, IP 66, Colour: Black

### In general

Order number	Article designation	GTIN (EAN)	Packaging unit
28504.4	KDS-SR 10/24	4044211210809	1 PC

---

28517.4

KDS-Inlay 2 BK

KDS-Inlay 2 BK

## Accessories

---

### Screw frame

---



Cable entry with foamed-in seal, Mounting type: Screws, Length: 106 mm, Width: 70 mm, IP 66, Colour: Black

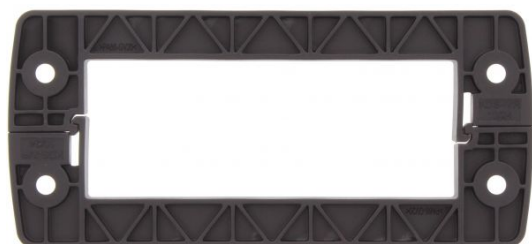
### In general

Order number	Article designation	GTIN (EAN)	Packaging unit
28500.4	KDS-SR 6/10	4044211210021	1 PC

---

### Locking frames

---



Inner locking frame, Length: 152 mm, Height: 11.5 mm, Colour: Black

### In general

Order number	Article designation	GTIN (EAN)	Packaging unit
28505.4	KDS-IVR 10/24	4044211210816	10 PC

---



28517.4

KDS-Inlay 2 BK

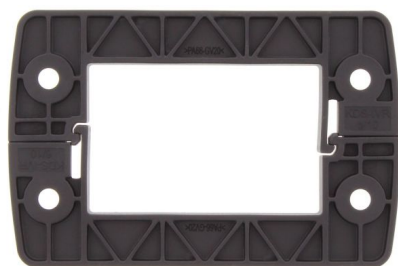
KDS-Inlay 2 BK

## Accessories

---

### Locking frames

---



Inner locking frame, Length: 105 mm, Height: 11.5 mm, Colour: Black

### In general

Order number	Article designation	GTIN (EAN)	Packaging unit
28501.4	KDS-IVR 6/10	4044211210779	10 PC

---