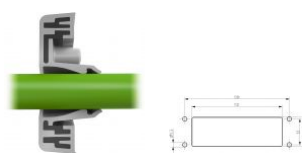


28630.4

KES 13/24 BK

KES 13/24 BK



Cable entry with membrane for unassembled cables, Mounting type: Screw, Length: 147 mm, Width: 58 mm, IP66, Colour: Black

RAL: 9005

Business data

Product description	Cable Entry
Packaging unit	10
Quantity unit	PC
Weight per piece (not including packaging)	102.1
Weight per piece (including packaging)	109.1
Unit of weight	G
Customs number	39259020
Country of origin	DE

28630.4

KES 13/24 BK

KES 13/24 BK

Technical Data

Dimensions

Length	149.6 mm
Length of wall cutout	112 mm
Width	58 mm
Width of wall cutout	36 mm
Installation height	14.5 mm
Diameter of the screw holes	5.5 mm

Materials

Material	Polyamide 6.6
Glass-fibre reinforced	✓
Flammability class UL 94	V-0
Working temperature, min.	-40 °C
Working temperature, max.	90 °C
Sealing material	TPE
Halogen-free	✓
Silicone-free	✓

28630.4

KES 13/24 BK

KES 13/24 BK

Technical Data

Further technical data

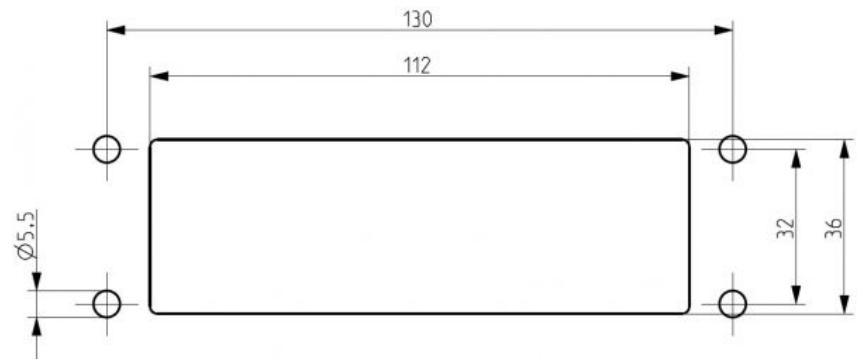
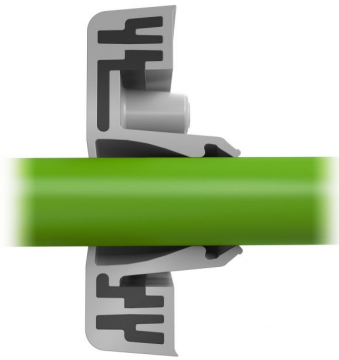
Mounting type	Screws
Protection	IP66
NEMA Type	4x
Number of screw holes	4
Fixing screws	M5 (ISO 4762 / DIN 912)
Torque of the fixing screws	3 Nm
Number of wires	13
Number of cables for cable diameters 3.2 - 6.3 mm	10
Number of cables for cable diameters 16.0 - 20.5 mm	3

28630.4

KES 13/24 BK

KES 13/24 BK

Media



28630.4

KES 13/24 BK

KES 13/24 BK

Accessories

EMV-Bügel



Shield-connection rail enabling mounting of shield connection clips directly on cable entry system KDS and KES, Mounting type: Screw, Length: 35,3 mm, Width: 140 mm, Height: 16 mm, Profile: 10x3 mm

In general

Order number	Article designation	GTIN (EAN)	Packaging unit
28626.0	KDS-EMV-SAB 10/24	4044211219659	1 PC

Blechlocher



In general

Order number	Article designation	GTIN (EAN)	Packaging unit
28752.0	BL-VA KES	4044211221935	1 PC

28630.4

KES 13/24 BK

KES 13/24 BK

Accessories

Blechlocher



In general

Order number	Article designation	GTIN (EAN)	Packaging unit
28744.0	BL KES	4044211221942	1 PC
