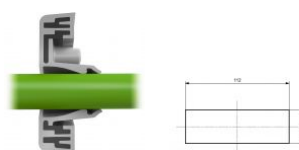


28656.6

KES-R 21/24 GR

KES-R 21/24 GR



Cable entry with membrane for unassembled cables, Mounting type: Rasten, Length: 147 mm, Width: 58 mm, IP54, Colour: Grey

RAL: Ähnlich 7035

Business data

Product description	Cable Entry
Packaging unit	10
Quantity unit	PC
Weight per piece (not including packaging)	111
Weight per piece (including packaging)	118.2
Unit of weight	G
Customs number	39259020
Country of origin	DE

28656.6

KES-R 21/24 GR

KES-R 21/24 GR

Technical Data

Dimensions

Length	149.6 mm
Length of wall cutout	112 mm
Width	58 mm
Width of wall cutout	36 mm
Installation height	14.5 mm

Materials

Material	Polyamide 6.6
Glass-fibre reinforced	✓
Flammability class UL 94	V-0
Working temperature, min.	-40 °C
Working temperature, max.	90 °C
Sealing material	TPE
Halogen-free	✓
Silicone-free	✓

28656.6

KES-R 21/24 GR

KES-R 21/24 GR

Technical Data

Further technical data

Mounting type	Snap-on
Protection	IP54
Sheet thickness, min.	1.5 mm
Max. sheet thickness	2 mm
NEMA Type	1
Number of wires	21
Number of cables for cable diameters 3.2 - 6.3 mm	1
Number of cables for cable diameters 4.0 - 7.5 mm	14
Number of cables for cable diameters 5.5 - 10.5 mm	4
Number of cables for cable diameters 8.0 - 12.5 mm	2

28656.6

KES-R 21/24 GR

KES-R 21/24 GR

Media



28656.6

KES-R 21/24 GR

KES-R 21/24 GR

Accessories

EMV-Bügel



Shield-connection rail enabling mounting of shield connection clips directly on cable entry system KDS and KES, Mounting type: Screw, Length: 35,3 mm, Width: 140 mm, Height: 16 mm, Profile: 10x3 mm

In general

Order number	Article designation	GTIN (EAN)	Packaging unit
28626.0	KDS-EMV-SAB 10/24	4044211219659	1 PC

Blechlocher



In general

Order number	Article designation	GTIN (EAN)	Packaging unit
28752.0	BL-VA KES	4044211221935	1 PC

28656.6

KES-R 21/24 GR

KES-R 21/24 GR

Accessories

Blechlocher



In general

Order number	Article designation	GTIN (EAN)	Packaging unit
28744.0	BL KES	4044211221942	1 PC
