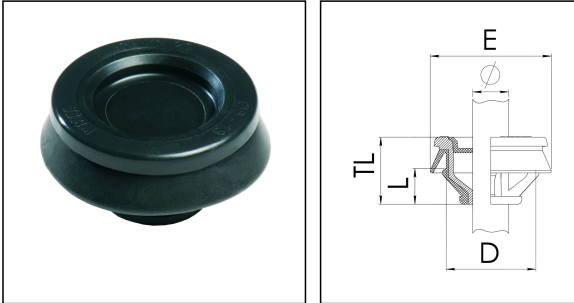


CLIXX® 25

Membrane cable entry with strain relief, plastic, RAL 9005, M25



Product illustrations are exemplary and may differ from the chosen product. Further variants and individual customization, we will gladly provide you on request.



Material	Polypropylene
Material membrane	TPE
Temp. range min	-40 °C
Temp. range max	65 °C
Glow wire test	750 °C
Protection class	IP66 / IP67
Ø Connection thread D	25
Length screw-in thread L	7,5 mm
Ø cable diameter min	9 mm
Ø cable diameter max	17 mm
Collar diameter (E)	32 mm - 38 mm
Total length TL	15 mm
Ø Drilling	25,7 mm
Wall thickness S	0,8 mm - 3,5 mm
Product Color	RAL 9005
Order no. RAL 9005	10101936
Type	CLIXX® 25
Packing unit	50
ETIM-Classification	EC000451

03.06.2019

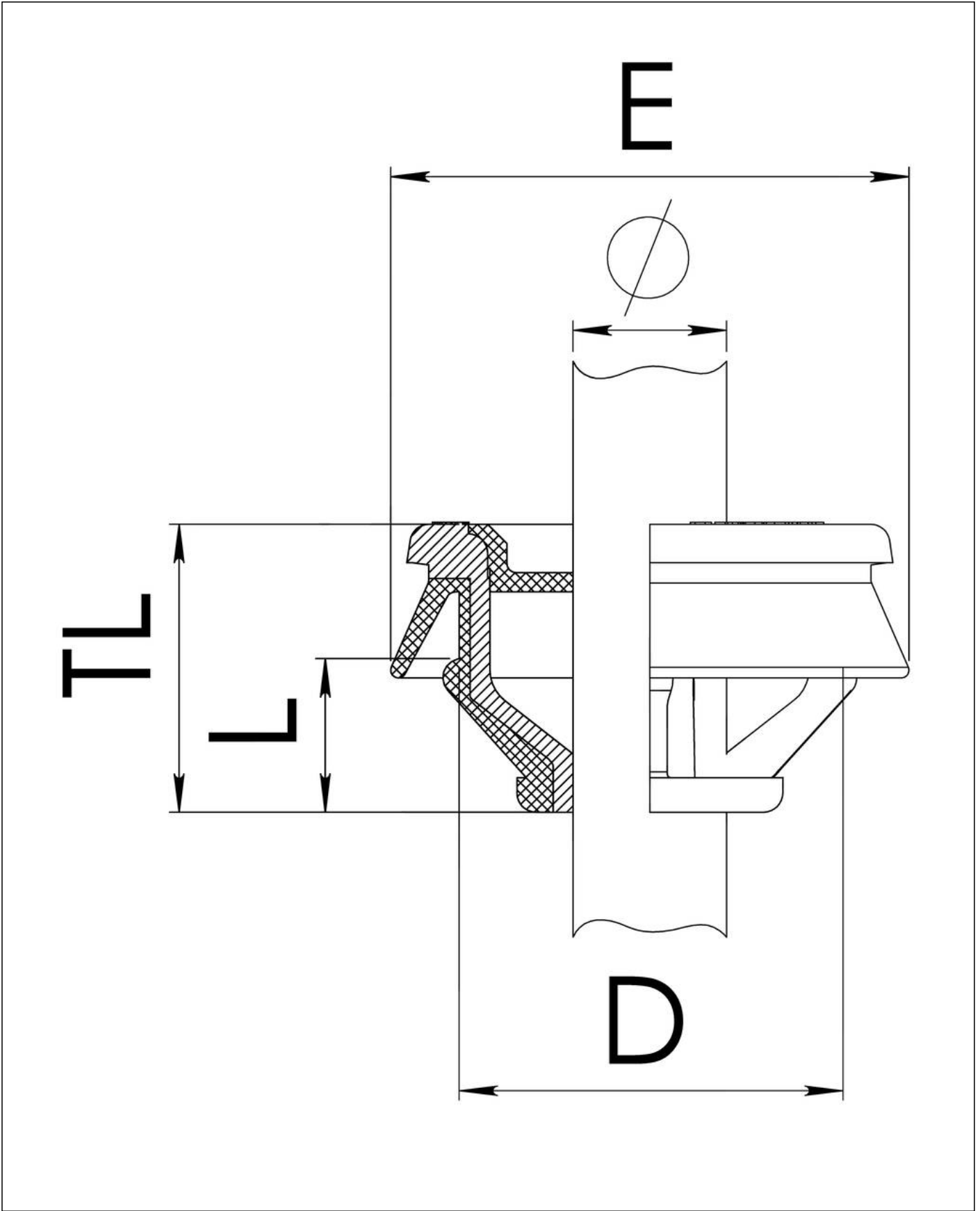
Your Contact:

WISKA Hoppmann GmbH

Kisdorfer Weg 28 · 24568 Kaltenkirchen · Germany

☎ +49-4191-508-0 · 📠 +49-4191-508-209

contact@wiska.de · www.wiska.com



Your Contact:
WISKA Hoppmann GmbH
Kisdorfer Weg 28 · 24568 Kaltenkirchen · Germany
☎ +49-4191-508-0 · 📠 +49-4191-508-209
contact@wiska.de · www.wiska.com