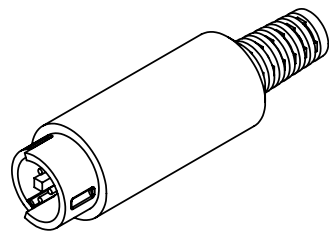
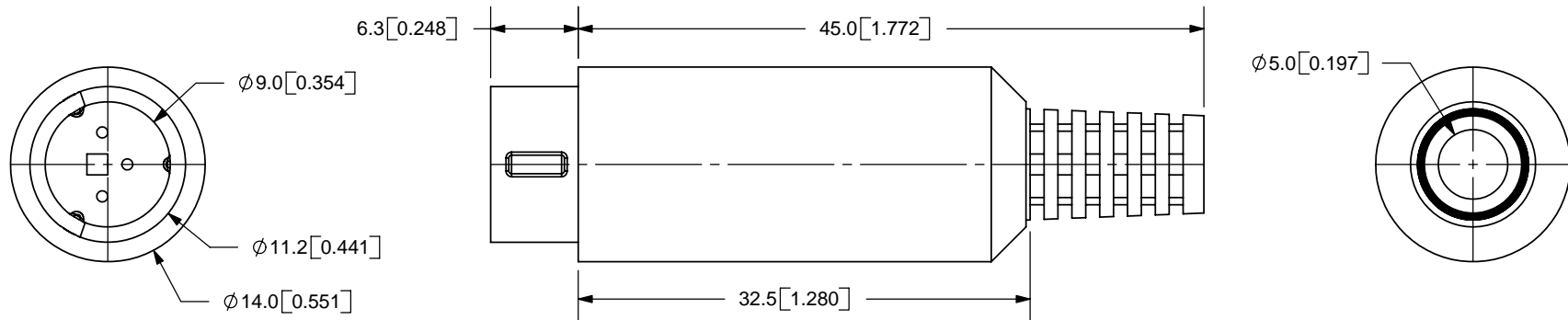


REV.	DESCRIPTION	DATE
A	NEW DRAWING	4/6/2006



SCALE 1:1

NOTES:

RECOMENDED WIRE RANGE: 24AWG~28AWG
 LEAD TERMINATION: USE CRIMP PINS, PN: CP-9999 (DIGI-KEY)
 CRIMP TOOL: AMP UNIVERSAL CRIMP TOOL

SPECIFICATIONS:

RATING: 12V DC @ 2A
 CONTACT RESISTANCE: 30m OHMS MAX
 INSULATION RESISTANCE: 50M OHMS MIN: 500V DC
 VOLTAGE WITHSTAND: 500V AC R.M.S. FOR 1 MINUTE
 LIFE: 5,000 CYCLES

TOLERANCE:

X.X ± 0.5 mm
 X.XX ± 0.1 mm



CUI INC

20050 SW 112th Ave.
 Tualatin, OR 97062
 Phone: 503-643-4899
 800-275-4899
 Fax: 503-372-1266
 Website: www.cui.com

	MATERIAL	PLATING
SHIELD	Brass	Nickel
CONTACT	Brass	Silver
COVER	EVA+LLDPE	
SHELL	ABS	
HOUSING	Nylon66+GF	

TITLE: MINI DIN IN-LINE PLUG		REV: A
PART NO. MD-30	UNITS: MM [INCHES]	
DRAWN BY: ZRJ	APPROVED BY:	SCALE: 2:1

PC FILE NAME:
MD-30

COPYRIGHT 2006 BY CUI INC.