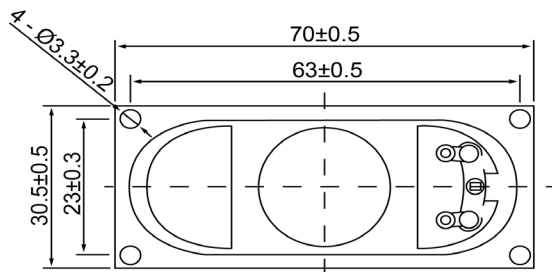
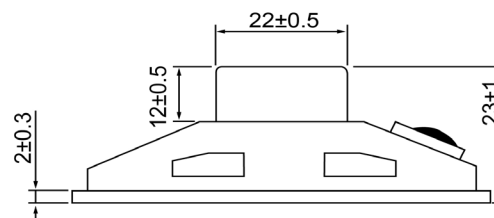



TOP VIEW



SIDE VIEW



Specifications			Notes	Revision History					
Description	Value	Unit		Version	Description	Date	Approved		
Shape	Rectangle		1) All dimensions are in mm unless otherwise noted 2) All parts meet RoHS  DB UNLIMITED	1	Released from Engineering	2/5/2014	J.S.		
Resonant Frequency	300	(Hz)							
Frequency Range	200 ~ 20,000	(Hz)							
SPL @ 10cm	100	(dBA)							
Impedance	8	(Ohm)							
Cone Material	Cloth								
Nominal Power	2	(W)							
Max Power	5	(W)							
Mount Type	Frame Mount								
Operating Temperature	-40 ~ +80	°C							
Storage Temperature	-40 ~ +80	°C							
Weight	7.6	(g)							
				High Temp Dynamic Speaker		SC700308-1			
				Drawn by G.W.	Date 1/27/2014	Checked by C.E.	Date 2/5/2014	Approved by J.S.	Date 2/5/2014