

TOLERANCE
UNLESS OTHERWISE
SPECIFIED

.X	±0.35
.XX	±0.25
.XXX	±0.15

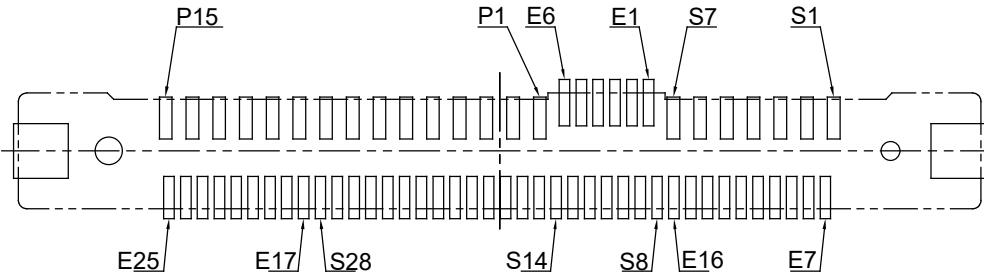
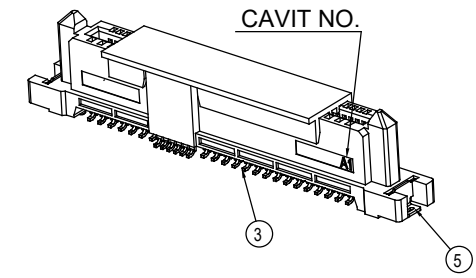
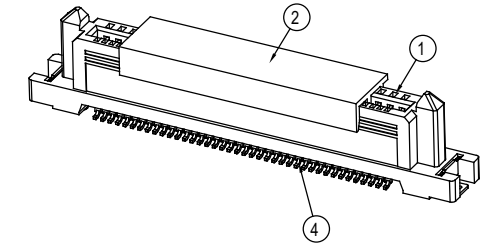
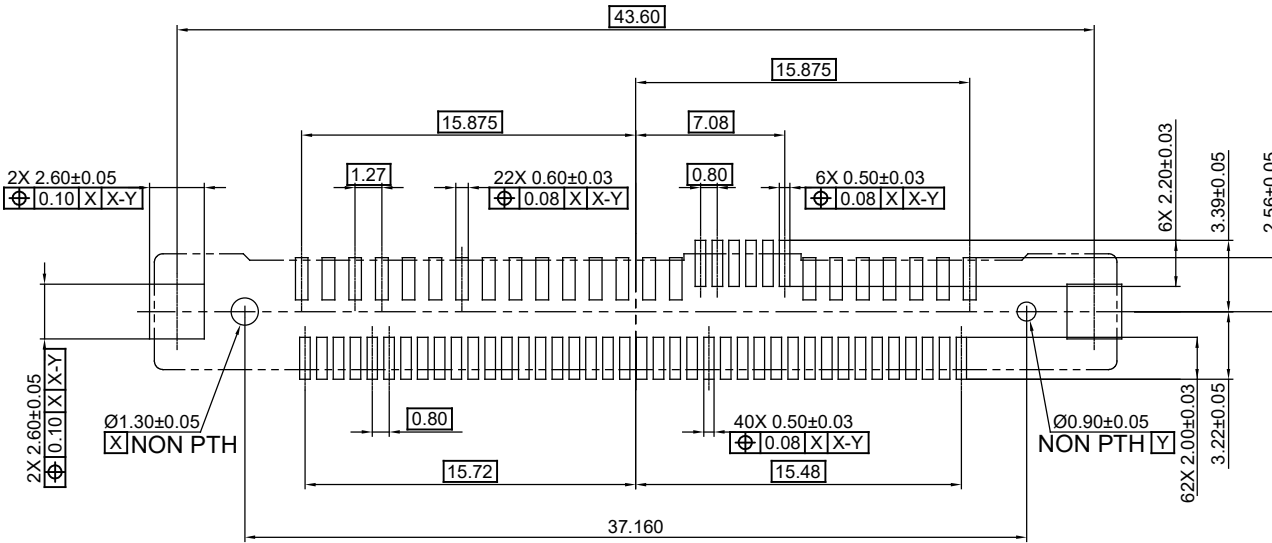
THIS IS A C.A.D. GENERATED DRAWING
DO NOT MAKE MANUAL REVISIONS TO MASTER.



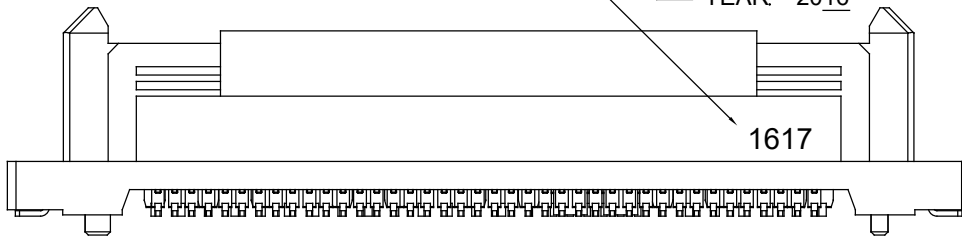
ISSUE NUMBER

ORIGINAL

1



DATE CODE: 16 17
WEEK
YEAR: 2016



MOVE	LATCH	QTY.	MATERIAL	FINISH/COLOR
2	CAP	1	GLASS FILLED LCP, UL94 V-0	BLACK
1	HOUSING	1	GLASS FILLED LCP, UL94 V-0	BLACK
4	PITCH 0.80 CONTACT	46	COPPER ALLOY	SEE NOTES
3	PITCH 1.27 CONTACT	22	COPPER ALLOY	SEE NOTES
2	LATCH	2	COPPER ALLOY	TIN 100~200 µ"
NO.	DESCRIPTION	QTY.	MATERIAL	FINISH/COLOR

SAS CONNECTOR, VERTICAL SMT,
68 CONTACTS, FEMALE

ACAD REFERENCE NO.: 271-068-629-002	
DRAWN: W.T	DATE: JULY.03 /2018
CHECKED:	DATE:
SCALE: N.T.S	SHEET 2 OF 2
DRAWING NUMBER: 271-068-629-002	ISSUE
PART NUMBER: 271-068-629-002	1



THIS SERIES FULLY CONFORMS TO
THE EUROPEAN UNION DIRECTIVES
2011/65/EU FOR RoHS COMPLIANCY.



EDAC INC
TORONTO, ONTARIO
CANADA
YOUR CONNECTION TO QUALITY & SERVICE

THESE DRAWINGS AND SPECIFICATIONS
ARE THE PROPERTY OF EDAC INC., AND
SHALL NOT BE REPRODUCED, OR COPIED
OR USED AS THE BASIS FOR THE
MANUFACTURE OR SALE OF APPARATUS
WITHOUT WRITTEN PERMISSION.