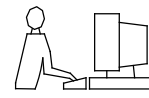


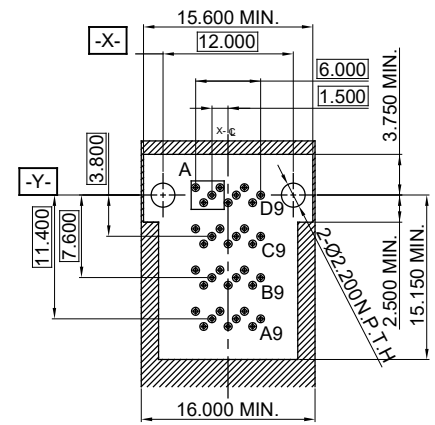
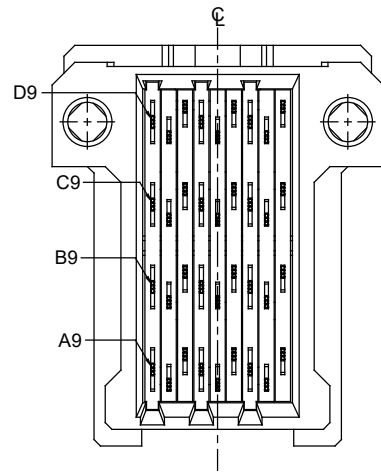
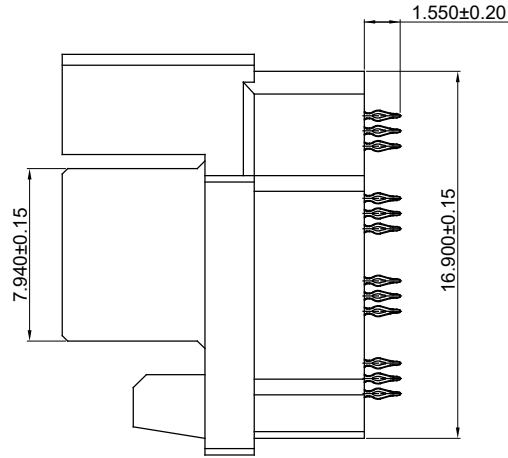
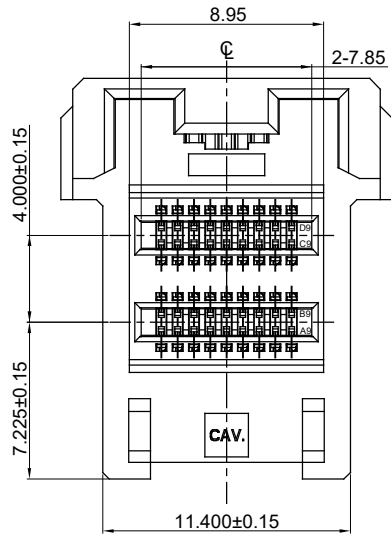
TOLERANCE UNLESS OTHERWISE SPECIFIED	
.X	±0.25
.XX	±0.15
.XXX	±0.10

THIS IS A C.A.D. GENERATED DRAWING
DO NOT MAKE MANUAL REVISIONS TO MASTER.

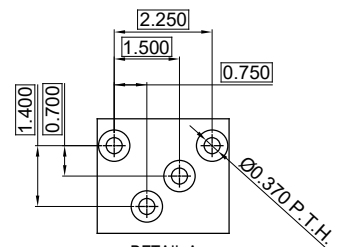


NOTES:

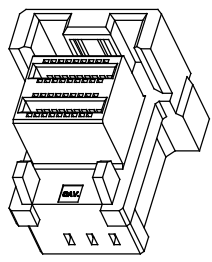
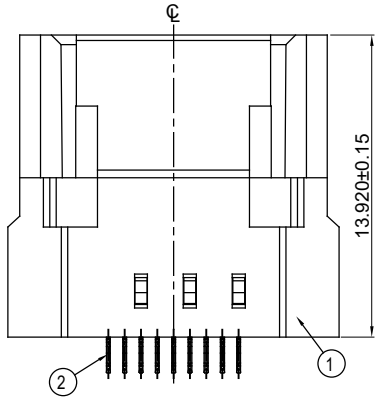
MATERIAL: L.C.P GLASS REINFORCED, UL-94V-0
 HOUSING: L.C.P GLASS REINFORCED, UL-94V-0
 INSERT MOLDING: L.C.P GLASS REINFORCED, UL-94V-0
 CONTACT: COPPER ALLOY
 30 μ" GOLD PLATING ON CONTACT AREA &
 MATTE TIN PLATING 20~120μ" ON SOLDER
 TAIL OVER NICKEL 50~150μ" UNDER PLATING



RECOMMENDED PCB LAYOUT



DETAIL A
SCALE 8:1



NO.	DESCRIPTION	QTY.	MATERIAL	FINISH/COLOR
2	CONTACT	36	COPPER ALLOY	SEE NOTES
1	INSULATOR	1	L.C.P SERIES, UL94 V-0	BLACK

MINI SAS HD EXTERNAL, VERTICAL PRESS FIT,
31 CONTACTS, FEMALE

ACAD REFERENCE NO.: 903-036-231-002	
DRAWN: W.T	DATE: JULY.03 /2018
CHECKED:	DATE:
SCALE: N.T.S	SHEET 1 OF 1
DRAWING NUMBER: 903-036-231-002	ISSUE
PART NUMBER: 903-036-231-002	1



THIS SERIES FULLY CONFORMS TO
THE EUROPEAN UNION DIRECTIVES
2011/65/EU FOR RoHS COMPLIANCY.



EDAC INC
TORONTO, ONTARIO
CANADA
YOUR CONNECTION TO QUALITY & SERVICE

THESE DRAWINGS AND SPECIFICATIONS
ARE THE PROPERTY OF EDAC INC., AND
SHALL NOT BE REPRODUCED, OR COPIED
OR USED AS THE BASIS FOR THE
MANUFACTURE OR SALE OF APPARATUS
WITHOUT WRITTEN PERMISSION.