

JB12 screwless jumper bars

Common terminal block accessories



1SNK160239V0014

JB12

12 mm 0.472 in Spacing

Description

Facilitate & secure your jumper bar assembly process:

- Screwless mounting,
- Insulated,
- Positive locking.

Ordering Details

Description	Color	Type	Order Code	Pkg pce	Weight (1 pce) g
12 mm 0.472 in spacing 2 poles 3 poles 5 poles	Orange	JB12-2	1SNK912302R0000	50	4.86
		JB12-3	1SNK912303R0000	50	7.55
		JB12-5	1SNK912305R0000	20	12.93

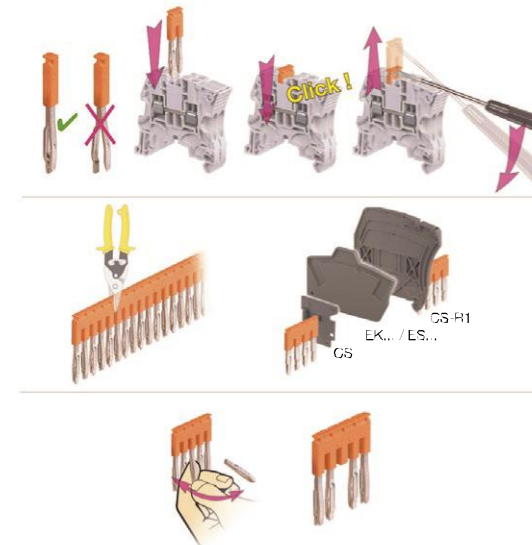
Main Technical Data

Material specifications	Insulating material	Polyamide			
	Flammability	V0			
	NF F 16 101	I2F2			
Ambient temperature min/max	Service IEC 60068-2-1	-55 ... +110 °C	-67 ... +230 °F		
	Storage	-55 ... +110 °C	-67 ... +230 °F		
	Installing	-5 ... +40 °C	23 ... +104 °F		
		IEC	UL - CSA	Ex e	
Rated current		76 A	67 A		
Rated voltage	Standard use	1000 V	600 V	630 V	
	Cut extremities	800 V	300 V	400 V	
	Cut poles	400 V	300 V	Consult us	
Impulse withstand voltage		6000 V			
Protection		IP20	NEMA 1		

All the main technical data provided are "manufacturer" values.

RoHS	ReHS																		
------	------	--	--	--	--	--	--	--	--	--	--	--	--	--	--	--	--	--	--

Mounting instructions



Additional accessories must be installed on the cut side of the jumper bar with cut extremities:

	Feed-through	Double-deck	Others
ZS	CS	ES...	CS-R1
ZK		EK...	

All the technical data for UL/CSA standard and dimensions in inches are in *italics*.