



Quality Products. Service Excellence.

Swing-Out Sectional Wall Mount Rack Cabinet *HWC Series*

Heavy Duty UL Rated 350 lbs|159 kg Weight Capacity

Features



- Available in three (3) heights, two (2) widths and two (2) depths.
- Optional locking doors are constructed in 16-gauge steel. The doors install in minutes and are available in vented, tinted window and solid.
- The main body is constructed in 16-gauge welded steel and includes four (4) vents for **optional fans** on the sides of the cabinet.
- Includes one (1) pair of adjustable depth 10-32 tapped EIA compliant mounting rack rails.
 - Thirty (30) inch wide mounting rails include cutouts for optional 1U 19" accessories, such as cable management or power bars.
 - 10-32 tapped rails are easy to remove on-site and replace with square hole rails (sold separately) if needed.
- Includes a 50-pack of 10-32 mounting screws.



Rear Section Features

- Heavy duty rear bracket is constructed in 14-gauge welded steel and features a spring-hinge pin for easy installation and removal.
- 2.50" and 2.00" conduit knockouts are located on the side.
- 3.00", 2.00", 1.38" and 1.12" conduit knockouts are located on the top and bottom.
- Fan knockouts/cable access located on the top and bottom.
- Numerous cable management mounting points included.
- Heavy duty keyhole for wall mounting.
- Large openings in rear for cable access.
- Dedicated bonding and grounding points that also provide drill-less mounting of electrical utility boxes. **Ground Cable Kit** sold separately.

Specifications

- UL 2416 Rated for up to 350 lbs (159 kg) static load rating.
- Rugged sand-textured black powder paint which reduces fingerprints and marks.
- Meets PCI DSS (Payment Card Industry Data Security Standard) compliance requirements, when door installed.
- TAA Compliant.
- RoHS Compliant.
- Manufactured in North America.

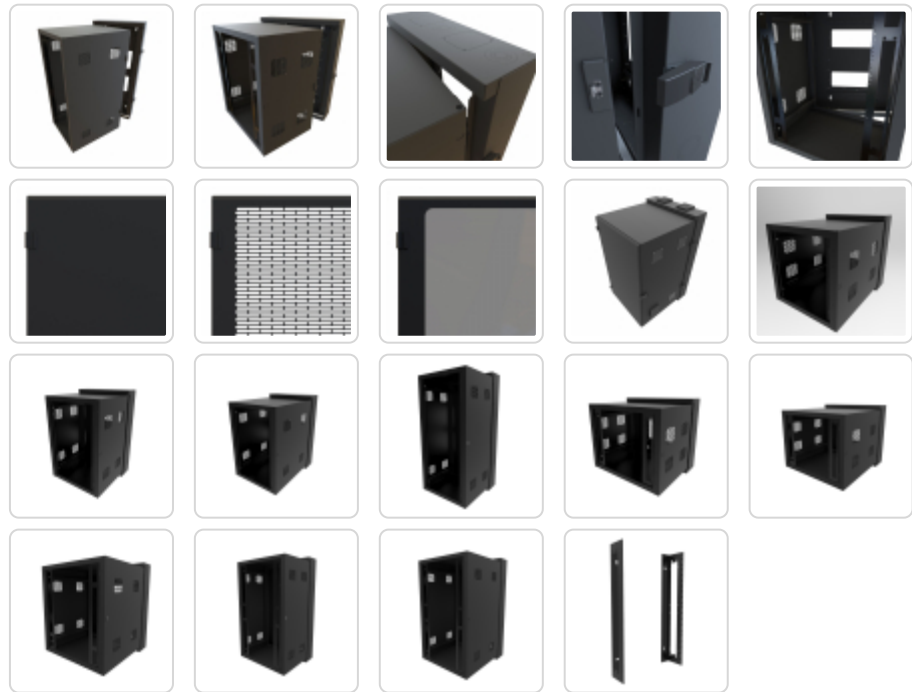


Upgrade the cabinet to be dust-resistant with the **HWCF Cabinet Sealing and Filter Kit**.



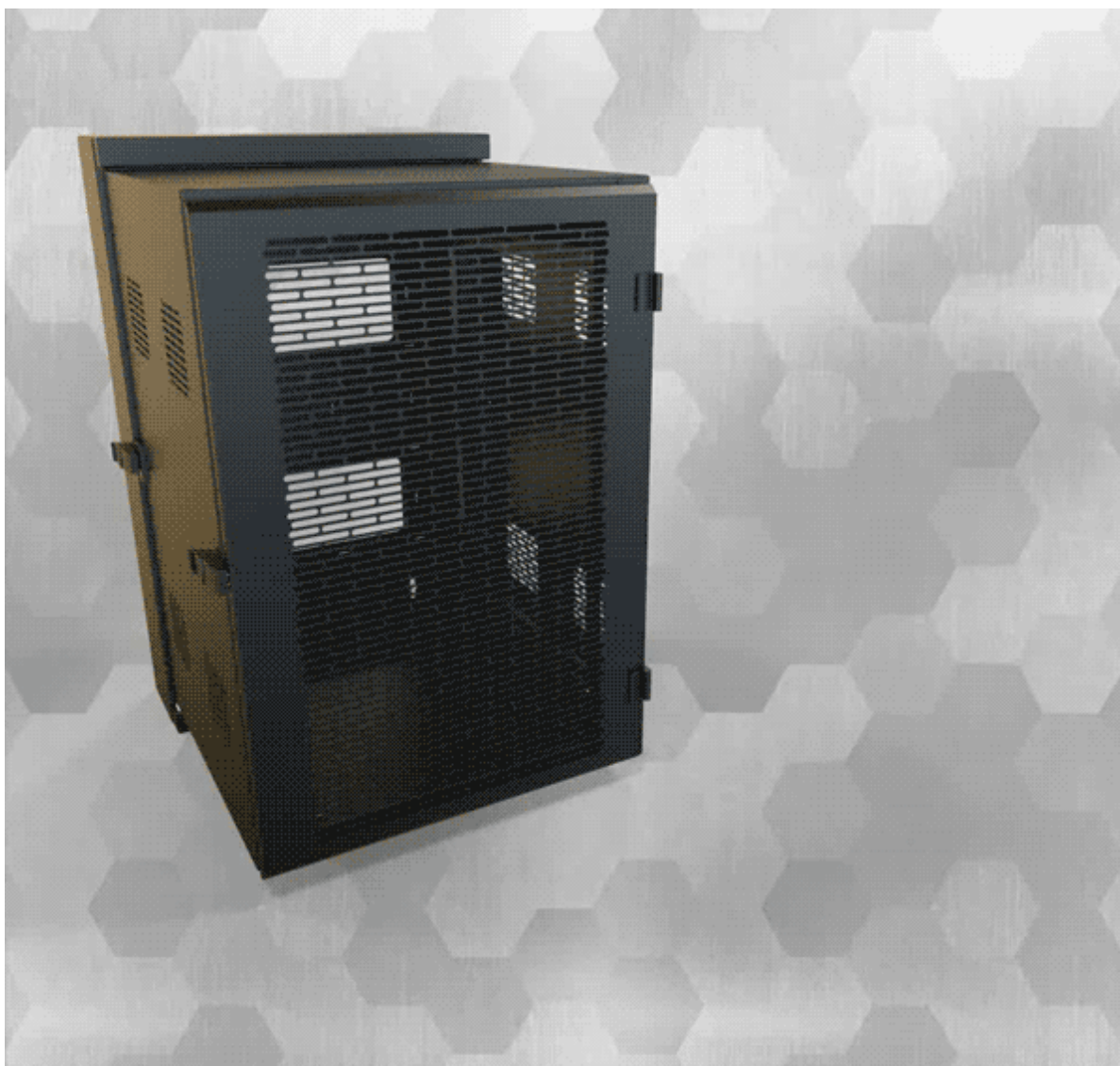
If you require UL and CSA Rated Type 12 or Type 4, consider the **EN4DH Series**.

Gallery



Accessories

- Wall Rack Cabinet Sealing and Filter Kit
- Universal Rack Shelf
- Rack Unit Label
- Grounding
- Cable Management
- Two Post Sliding Rack Shelf
- Outlet Strips
- Fan Kits



24" Wide (Door not included)

Part No. No Door	Overall Dimensions			Rack Units	Mounting (Usable) Dimensions		
	Height	Width	Depth		Height	Width	Depth
HWC2412U27BK	27.81	24.68	26.78	12U	21.00	19.00	24.50
HWC2412U35BK	27.81	24.68	34.78	12U	21.00	19.00	32.50
HWC2418U27BK	38.31	24.68	26.78	18U	31.50	19.00	24.50
HWC2418U35BK	38.31	24.68	34.78	18U	31.50	19.00	32.50
HWC2427U27BK	54.06	24.68	26.78	27U	47.25	19.00	24.50
HWC2427U35BK	54.06	24.68	34.78	27U	47.25	19.00	32.50

30" Wide (Door not included)

Part No. No Door	Overall Dimensions			Rack Units	Mounting (Usable) Dimensions		
	Height	Width	Depth		Height	Width	Depth
HWC3012U27BK	27.81	30.68	26.78	12U + 2U	21.00	19.00	24.50
HWC3012U35BK	27.81	30.68	34.78	12U + 2U	21.00	19.00	32.50
HWC3018U27BK	38.31	30.68	26.78	18U + 2U	31.50	19.00	24.50
HWC3018U35BK	38.31	30.68	34.78	18U + 2U	31.50	19.00	32.50
HWC3027U27BK	54.06	30.68	26.78	27U + 4U	47.25	19.00	24.50
HWC3027U35BK	54.06	30.68	34.78	27U + 4U	47.25	19.00	32.50

Optional Doors

Compatible with Cabinet				
Height	Width	Solid	64% Vented	Tinted Window
12U	24	HWCSD2412UBK	HWCVD2412UBK	HWCWD2412UBK
18U	24	HWCSD2418UBK	HWCVD2418UBK	HWCWD2418UBK
27U	24	HWCSD2427UBK	HWCVD2427UBK	HWCWD2427UBK
12U	30	HWCSD3012UBK	HWCVD3012UBK	HWCWD3012UBK
18U	30	HWCSD3018UBK	HWCVD3018UBK	HWCWD3018UBK
27U	30	HWCSD3027UBK	HWCVD3027UBK	HWCWD3027UBK

Optional Additional Mounting Rails

Compatible with Cabinet				
Height	Width	Tapped 10-32	Square Hole	
12U	24	URR12U	-	
18U	24	URR18U	-	
27U	24	URR27U	-	
12U	30	HWC3012UTR	HWC3012USR	
18U	30	HWC3018UTR	HWC3018USR	
27U	30	HWC3027UTR	HWC3027USR	

Tags: Sectional Wall Mount Rack, Pivoting Rack, Data Wall Cabinet, Dual Hinge, Hinged Swing Gate

Data subject to change without notice

© 2020. Hammond Manufacturing Ltd. All rights reserved.