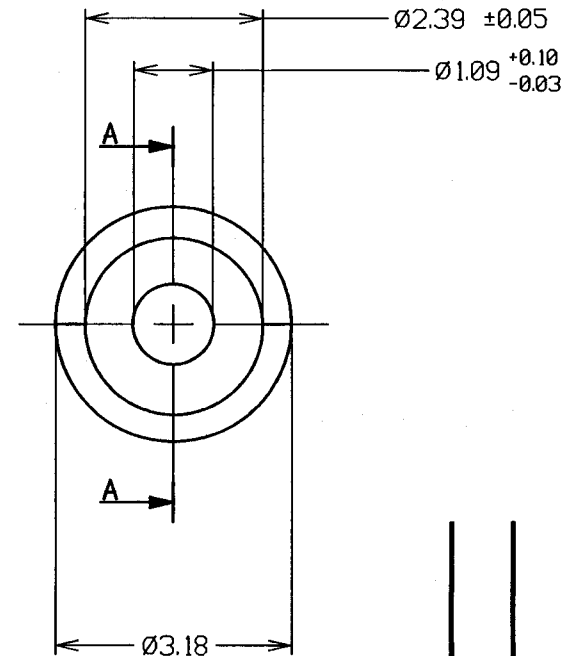


SECTION A-A



5	18.10.99	5007
4	02.07.89	1474
3	04.01.89	1384
2	22.05.86	982
1	10.07.80	----
ISS.	DATE	C/NOTE
APPROVED: <i>WSS</i>		
CHECKED: <i>M. J. Keir</i>		
DRAWN: J. KEIR		
CUSTOMER REF.:		
ASSEMBLY DRG:		

- NOTES:
1. TO BE ANNEALED BEFORE PLATING.
 2. RECOMMENDED PCB HOLE SIZE = $\varnothing 1.93-1.83\text{mm}$.
 3. RECOMMENDED PCB THICKNESS = 2.4mm.
 4. SWAGING TOOL = Z9026-00.

HARWIN

HARWIN INC U.S.A. TEL: (812) 285 0055 FAX: (812) 285 0056	HARWIN PLC U.K. TEL: 01705 370451 FAX: 01705 314590	HARWIN PTE SINGAPORE TEL: 65 7794909 FAX: 65 7793868
---	---	--

THIS DRAWING AND ANY INFORMATION OR DESCRIPTIVE MATTER SET OUT HEREON ARE CONFIDENTIAL AND COPYRIGHT PROPERTY OF THE HARWIN GROUP AND MUST NOT BE DISCLOSED, LOANED, COPIED OR USED FOR MANUFACTURING, TENDERING OR FOR ANY OTHER PURPOSE WITHOUT THEIR WRITTEN PERMISSION.

TOLERANCES
 X. = $\pm 1\text{mm}$
 X.X = $\pm 0.25\text{mm}$
 X.XX = $\pm 0.10\text{mm}$
 X.XXX = $\pm 0.01\text{mm}$
 ANGLES = $\pm 1^\circ$
 UNLESS STATED

MATERIAL:
 BRASS CZ124 1/2 HARD TO BS2874 (BRM1017)

FINISH: F0101 (TIN)

S/AREA: 143.43 mm²

TITLE: SOLDER POT

DRAWING NUMBER: H9026-01

SHT 1 OF 1