

# Customer Information Sheet

DRAWING No.: M22-19X00XX

SHEET 2 OF 2

IF IN DOUBT - ASK

©

NOT TO SCALE

THIRD ANGLE PROJECTION

ALL DIMENSIONS IN mm

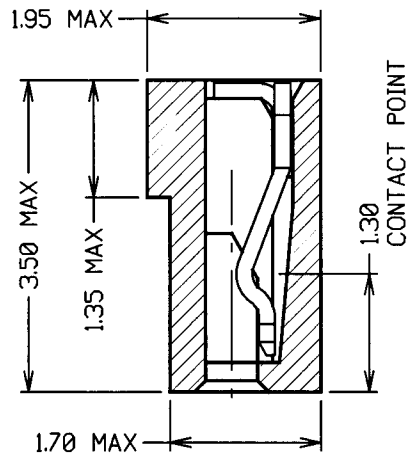
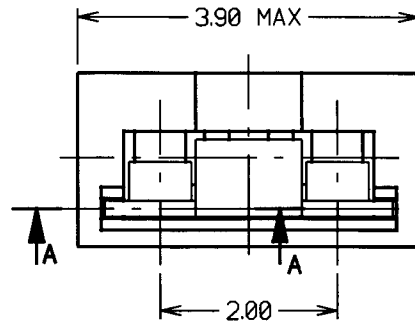
ORDER CODE:  
**M22-19X00XX**

MOULDING COLOUR

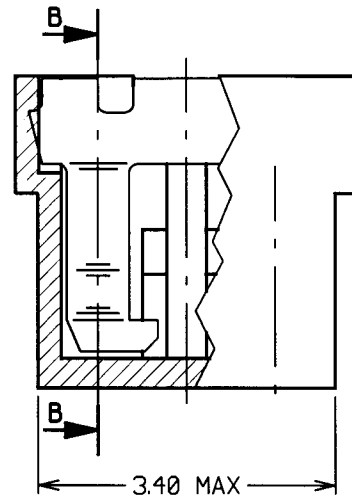
- 0 = BLACK
- 1 = BLUE
- 2 = RED
- 3 = LIGHT GREY

CONTACT FINISH

- 05 = GOLD
- 06 = 90/10 TIN/LEAD



SECTION B-B



PART SECTION A-A

## SPECIFICATIONS:

### MATERIALS:

MOULDING = GLASS-FILLED POLYESTER UL94V-0  
CONTACT = BERYLLIUM COPPER

### FINISH:

#### CONTACT:

05 = 0.13µ GOLD ON CONTACT FACE OVER NICKEL  
06 = 3µ 90/10 TIN/LEAD OVER NICKEL  
MOULDING COLOUR = SEE ORDER CODE

### ELECTRICAL:

CURRENT RATING AT 25°C = 2A MAX  
WORKING VOLTAGE = 250V AC/DC  
VOLTAGE PROOF = 500V AC/DC @ 50Hz  
CONTACT RESISTANCE (MAXIMUM):  
TIN/LEAD = 20 MILLIOHMS INITIAL  
25 MILLIOHMS AFTER CONDITIONING

GOLD = 15 MILLIOHMS INITIAL  
20 MILLIOHMS AFTER CONDITIONING

### INSULATION RESISTANCE (MINIMUM):

INITIAL = 1000 MEGOHMS  
AFTER CONDITIONING = 1000 MEGOHMS

### ENVIRONMENTAL:

TEMPERATURE RANGE = -40°C TO +85°C

### MECHANICAL:

#### DURABILITY:

TIN/LEAD = 50 OPERATIONS  
GOLD = 300 OPERATIONS  
INSERTION FORCE = 10N MAX  
WITHDRAWAL FORCE = 1N MIN

FOR COMPLETE SPECIFICATION, SEE COMPONENT SPECIFICATION C013XX (LATEST ISSUE):

3	27.11.98	4662
ISS.	DATE	C/N
APPROVED: <i>[Signature]</i>		
CHECKED: <i>[Signature]</i>		
DRAWN: W. J. BOURNE		
CUSTOMER REF.		
ASSEMBLY DRG:		

# HARWIN

HARWIN INC  
U.S.A.

TEL: (812) 285 0055  
FAX: (812) 285 0056

HARWIN PLC  
U.K.

TEL: 01705 370451  
FAX: 01705 314590

HARWIN PTE  
SINGAPORE

TEL: 65 7794909  
FAX: 65 7793868

### TOLERANCES

X. = ±1mm  
X.X = ±0.25mm  
X.XX = ±0.10mm  
X.XXX = ±0.01mm  
ANGLES = ±1°  
UNLESS STATED

### MATERIAL:

SEE ABOVE

FINISH: SEE ABOVE

S/AREA: mm<sup>2</sup>

### TITLE:

2mm PITCH JUMPER SOCKET  
ASSEMBLY (OPEN TOP)

DRAWING NUMBER:

M22-19X00XX

SHT  
2  
OF  
2