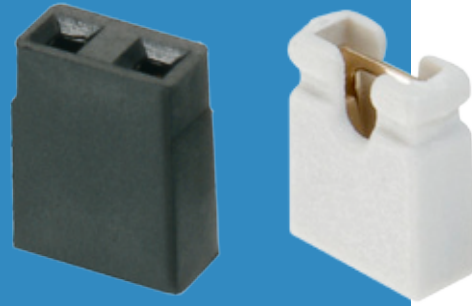


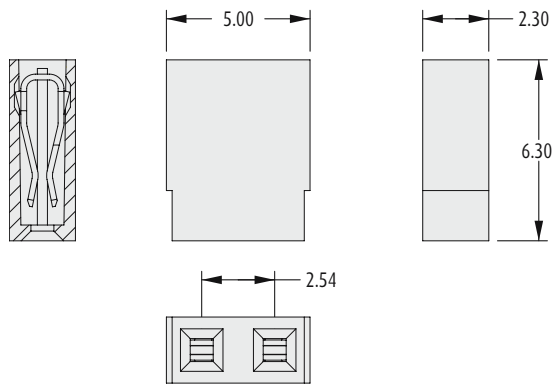
# M20 Connectors

## Jumper Sockets

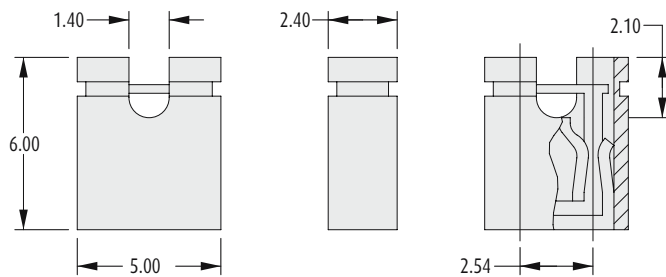
- ❖ Suitable for use with pin headers shown on pages 146 to 152.
- ❖ Can be fitted by hand, giving an alternative on-board programming method to DIP switches.
- ❖ Open top for use with test probes.
- ❖ End and side stackable.
- ❖ Choice of colours available.
- ❖ Multi-usage socket provides up to 300 operations (Gold).
- ❖ Twin beam contact for cost-effective reliability.



### HIGH REL, MULTI-USAGE



### HIGH FORCE, SINGLE OPERATION



### HOW TO ORDER

SERIES CODE

**M75 XX - XX**

#### FINISH

<b>05</b>	Gold	
<b>46</b>	Tin	

HIGH REL		SINGLE OPERATION	
<b>65</b>	Grey	<b>81</b>	Red
<b>66</b>	Red	<b>82</b>	Black
<b>67</b>	Black	<b>83</b>	Blue
<b>71</b>	Blue		

All dimensions in mm.

2.54mm (.100") PITCH