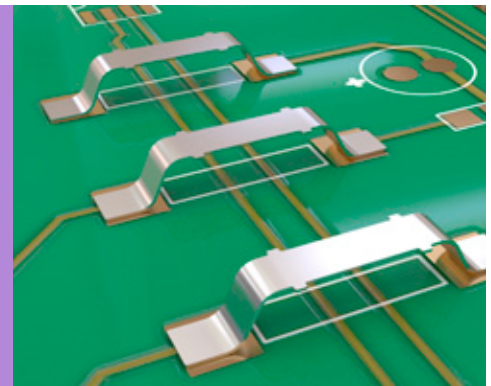


SMT Jumper Link

- Designed to link PCB tracks where through hole links are not possible.
- Typical applications include use on aluminium backplanes in power applications.
- High current.
- Small footprint.
- Low profile options available for space saving design.



SPECIFICATION	12.3mm LONG																				
<p>➤ Materials</p> <p>Material: Copper Alloy (S1621, S1911) Copper (S1731)</p> <p>Finish: See Order Code</p> <p>➤ Packaging</p> <p>Packaging format: Tape & Reel or Loose</p> <p>Reel quantity: S1621: 5,000 on a Ø330mm reel S1731: 2,500 on a Ø330mm reel S1911: 4,000 on a Ø330mm reel</p>	<p style="text-align: center;">Recommended PC Board Pattern</p>																				
<p>6.86mm LONG, 2.54mm HIGH</p> <p style="text-align: center;">Recommended PC Board Pattern</p>	<p>6.85mm LONG, 0.97mm HIGH</p> <p style="text-align: center;">Recommended PC Board Pattern</p>																				
HOW TO ORDER																					
<p style="text-align: center;">S1 XX 1 - 46 R</p> <table border="1" data-bbox="162 1617 341 1680"> <tr> <td>SERIES CODE</td> <td>S1</td> </tr> </table> <table border="1" data-bbox="162 1701 552 1869"> <tr> <th colspan="2">TYPE</th> </tr> <tr> <td>62</td> <td>12.3mm long</td> </tr> <tr> <td>73</td> <td>6.86mm long, 2.54mm high</td> </tr> <tr> <td>91</td> <td>6.85mm long, 0.97mm high</td> </tr> </table> <table border="1" data-bbox="1153 1596 1445 1722"> <tr> <th colspan="2">PACKAGING</th> </tr> <tr> <td>R</td> <td>Tape & Reeled</td> </tr> <tr> <td>Blank</td> <td>Loose</td> </tr> </table> <table border="1" data-bbox="1153 1743 1445 1827"> <tr> <th colspan="2">FINISH</th> </tr> <tr> <td>46</td> <td>Tin </td> </tr> </table>		SERIES CODE	S1	TYPE		62	12.3mm long	73	6.86mm long, 2.54mm high	91	6.85mm long, 0.97mm high	PACKAGING		R	Tape & Reeled	Blank	Loose	FINISH		46	Tin
SERIES CODE	S1																				
TYPE																					
62	12.3mm long																				
73	6.86mm long, 2.54mm high																				
91	6.85mm long, 0.97mm high																				
PACKAGING																					
R	Tape & Reeled																				
Blank	Loose																				
FINISH																					
46	Tin																				

All dimensions in mm.

EZ-BOARDWARE