

# Customer Information Sheet

DRAWING No.: S1731-XX

SHEET 2 OF 2

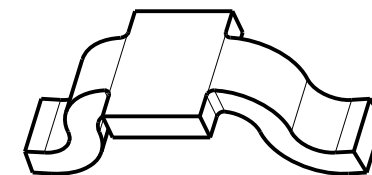
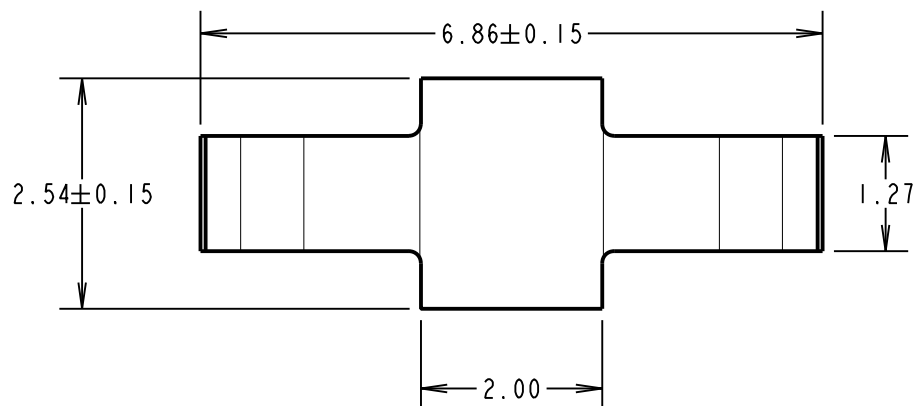
IF IN DOUBT - ASK

©

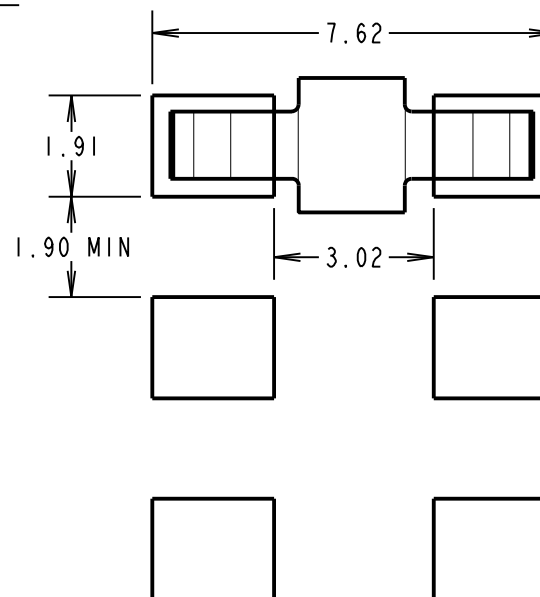
NOT TO SCALE

THIRD ANGLE PROJECTION

ALL DIMENSIONS IN mm



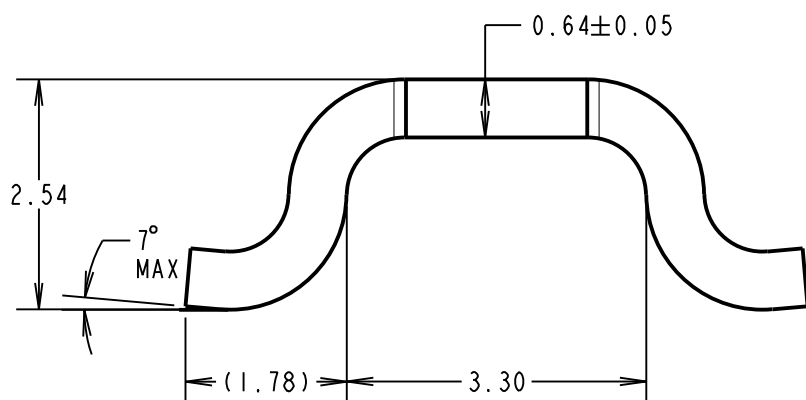
RECOMMENDED PAD LAYOUT



ORDER CODE:  
S1731-XX

FINISH

06 - 3 $\mu$  90/10 TIN LEAD OVER NICKEL  
46 - 3 $\mu$  100% TIN OVER NICKEL



- FOR REELED COMPONENT, SEE DRAWING S173-XX  
FOR TAPE AND REELED COMPONENT, SEE DRAWING S1731-XXR.
- PACKING: - 100 COMPONENTS PER BAG.
- CURRENT RATING = 10A MIN (30°C MAX TEMP RISE)

SM	3	30.09.10	10955
NAME	ISS.	DATE	C/NOTE
APPROVED: S. MCCULLAGH			
CHECKED: M. G. PLESTED			
DRAWN:		R. ADDE	
CUSTOMER REF.:			
ASSEMBLY DRG:			

**HARWIN**

HARWIN USA TEL: 603 893 5376 FAX: 603 893 5396 mis@harwin.com	HARWIN Europe (UK) TEL: 023 9231 4545 FAX: 023 9231 4590 mis@harwin.co.uk	HARWIN Asia TEL: +65 6 779 4909 FAX: +65 6 779 3868 mis@harwin.com.sg
--	--	--

THIS DRAWING AND ANY INFORMATION OR DESCRIPTIVE MATTER SET OUT HEREON ARE CONFIDENTIAL AND COPYRIGHT PROPERTY OF THE HARWIN GROUP AND MUST NOT BE DISCLOSED, LOANED, COPIED OR USED FOR MANUFACTURING, TENDERING OR FOR ANY OTHER PURPOSE WITHOUT THEIR WRITTEN PERMISSION.

TOLERANCES

X. =  $\pm 1$ mm  
X.X =  $\pm 0.25$ mm  
X.XX =  $\pm 0.10$ mm  
X.XXX =  $\pm 0.01$ mm

ANGLES =  $\pm 5^\circ$

UNLESS STATED

MATERIAL:  
CW004A ETP COPPER

FINISH: SEE ORDER CODE

S/AREA: mm<sup>2</sup>

TITLE:  
POWER SMT JUMPER LINK  
(LOOSE)

DRAWING NUMBER:  
S1731-XX

SHT  
2  
OF  
2