

# Customer Information Sheet

DRAWING No.: M225-2830046 & M225-2840046

IF IN DOUBT - ASK

©

NOT TO SCALE

THIRD ANGLE PROJECTION

ALL DIMENSIONS IN mm

**SPECIFICATION:**

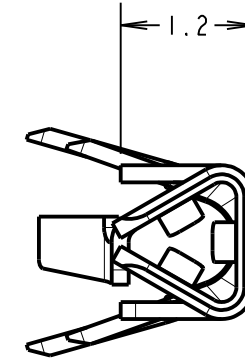
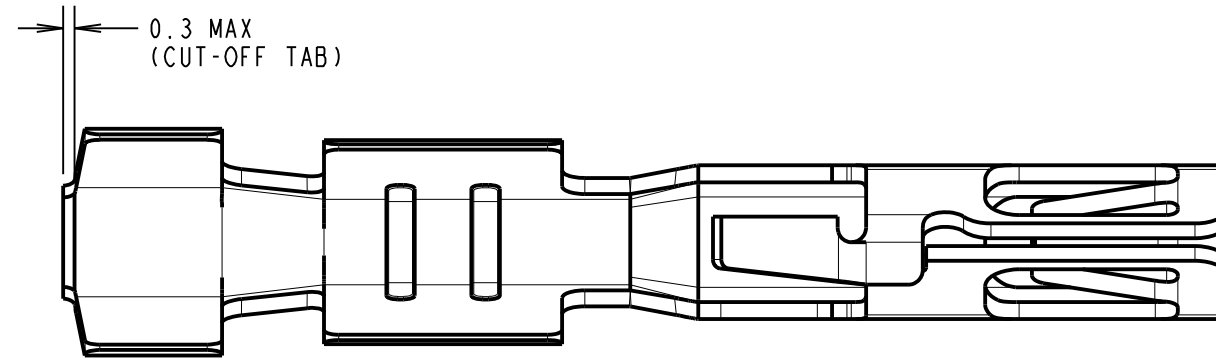
**MATERIAL:**  
BERYLLIUM COPPER

**FINISH:**  
46 = 3.0µm 100% OVER 2.4µm NICKEL

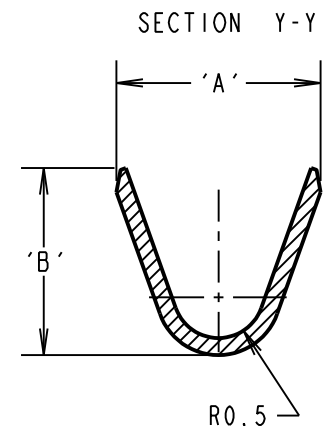
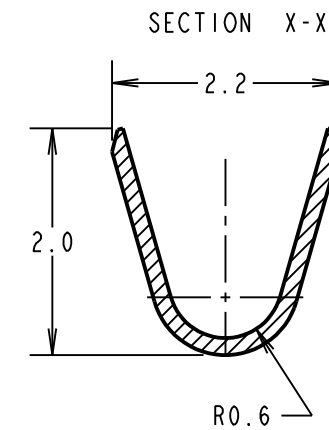
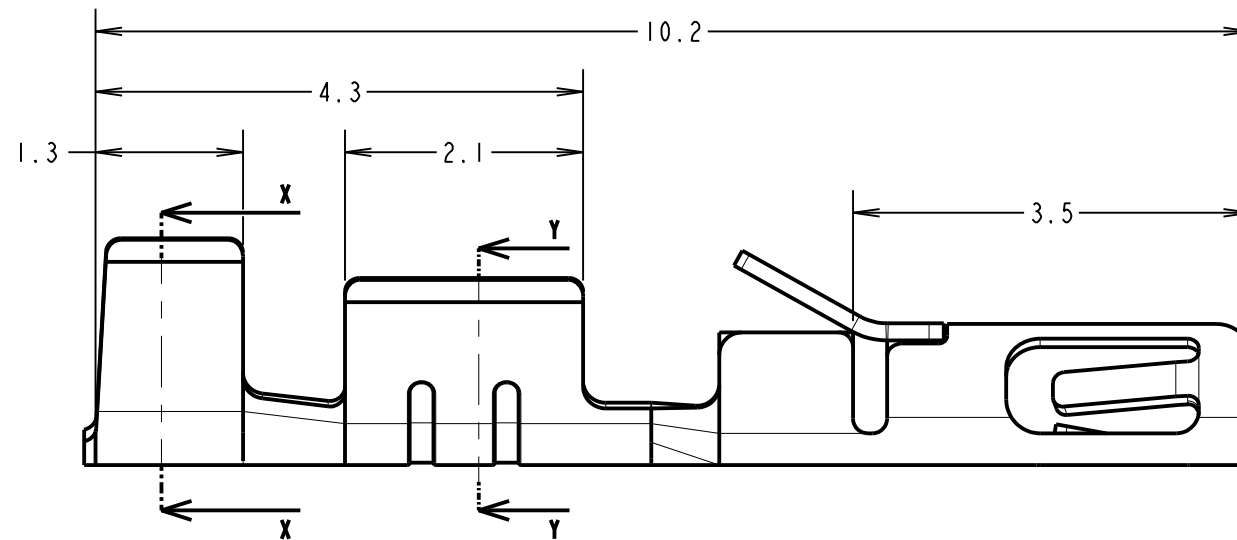
**MECHANICAL:**  
INSERTION FORCE = 5.0N MAX, 0.5N MIN  
WITHDRAWAL FORCE = 4.0N MAX, 0.2N MIN  
DURABILITY = 50 OPERATIONS

**ENVIRONMENTAL:**  
OPERATING TEMPERATURE = -55°C TO +125°C

**PACKING:**  
LOOSE, 100 PER BAG. ONE OR MORE BAGS PER BOX  
FOR COMPLETE CONNECTOR SPECIFICATION, SEE  
COMPONENT SPECIFICATION C050XX (LATEST ISSUE)

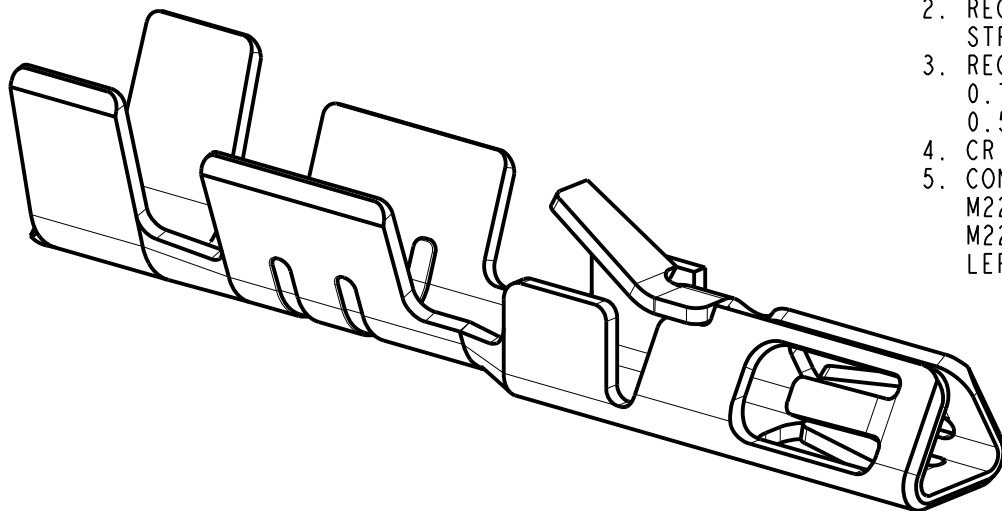


PART No.	DIMENSION	
	'A'	'B'
M80-2830046	1.8 ±0.2	1.7 ±0.2
M80-2840046	1.3 ±0.2	1.0 ±0.2



**NOTES:**

- TO BE USED WITH THE FOLLOWING FEMALE HOUSING:  
M225-455XX98 = HOUSING WITH RETAINER & PIN.
- RECOMMENDED WIRE TYPE = 22-28 AWG, WIRE INSULATION Ø0.6mm-Ø1.1mm.  
STRIP WIRE BY 2.7-3.0mm FOR CRIMPING.
- RECOMMENDED CRIMP HEIGHTS:  
0.76-0.82mm FOR 22-24 AWG CONTACTS  
0.50-0.56mm FOR 26-28 AWG CONTACTS.
- CRIMP SUITABLE FOR PROCESSING WITH HANDCRIMP TOOL Z80-255.
- CONTACTS ARE AVAILABLE ON REELS, PART NUMBER:  
M225-2530046 FOR 22-24 AWG WIRE AND  
M225-2540046 FOR 26-28 AWG WIRE, SUITABLE FOR PROCESSING WITH  
LEFT SIDE FEED CRIMPING PRESS. CONTACT [technical@harwin.co.uk](mailto:technical@harwin.co.uk) FOR DETAILS.



ORDER CODE: **M225-XXX0046**

WIRE SIZE: \_\_\_\_\_  
283 = 22-24 AWG  
284 = 26-28 AWG

FINISH: \_\_\_\_\_  
46 = 100% TIN ALL OVER

MR	3	18.12.18	21726
NAME	ISS.	DATE	C/NOTE
APPROVED: M.RUDKIN			
CHECKED: S.BENNETT			
DRAWN: S.BENNETT			
CUSTOMER REF.:			
ASSEMBLY DRG:			

**HARWIN**

[www.harwin.com](http://www.harwin.com)  
[technical@harwin.com](mailto:technical@harwin.com)

THIS DRAWING AND ANY INFORMATION OR DESCRIPTIVE MATTER SET OUT HEREON ARE CONFIDENTIAL AND COPYRIGHT PROPERTY OF THE HARWIN GROUP AND MUST NOT BE DISCLOSED, LOANED, COPIED OR USED FOR MANUFACTURING, TENDERING OR FOR ANY OTHER PURPOSE WITHOUT THEIR WRITTEN PERMISSION.

**TOLERANCES**  
X. = ±1mm  
X.X = ±0.50mm  
X.XX = ±0.10mm  
X.XXX = ±0.01mm  
**ANGLES = ±5°**  
UNLESS STATED

**MATERIAL:**  
SEE ABOVE

**FINISH:** SEE ABOVE

**S/AREA:** mm<sup>2</sup>

**TITLE:** DATAMATE TRIO-TEK  
FEMALE CRIMP CONTACT LOOSE  
22-24 AWG & 26-28 AWG

**DRAWING NUMBER:**  
**M225-2830046 & M225-2840046**

SHT 2 OF 2