

Customer Information Sheet

DRAWING No.: M80-25300XX & M80-25400XX

IF IN DOUBT - ASK

©

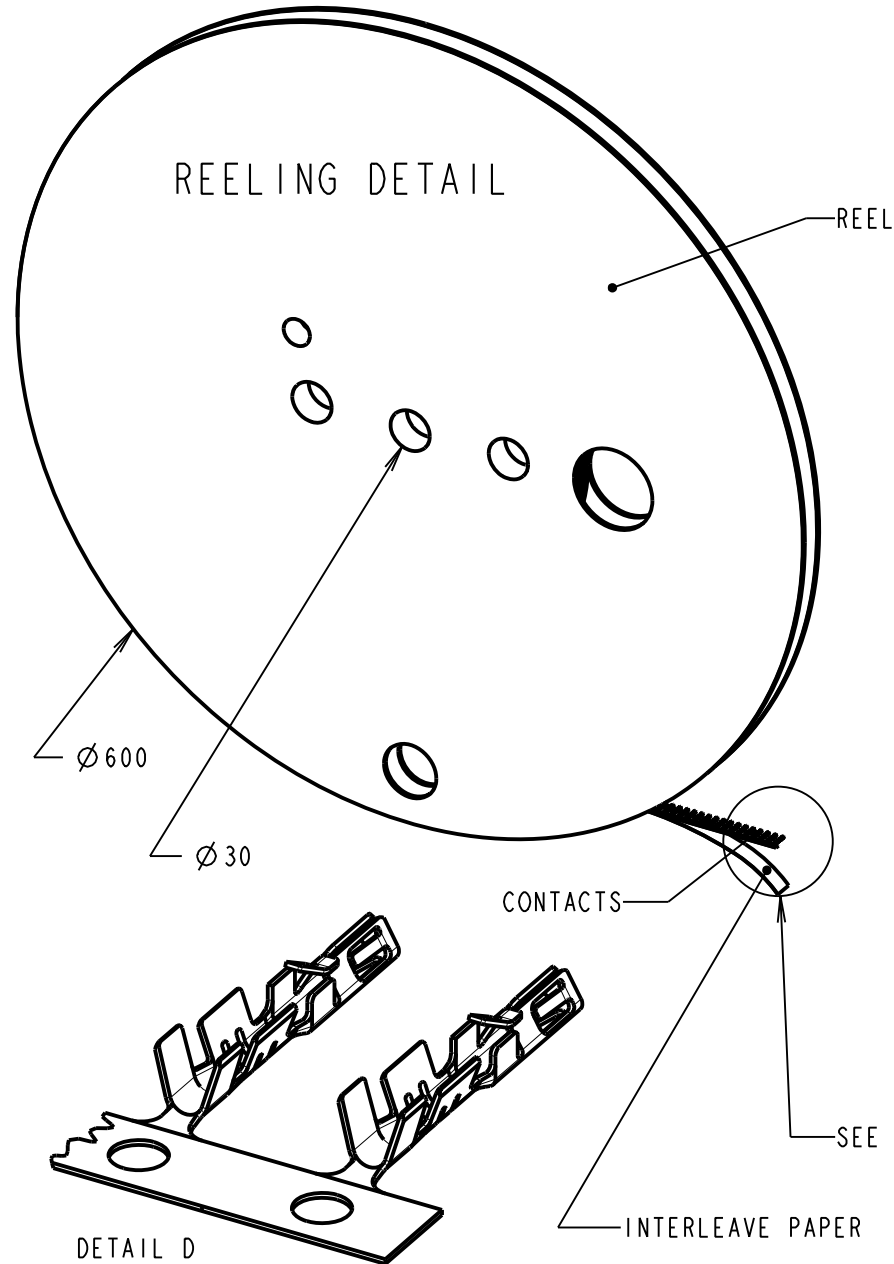
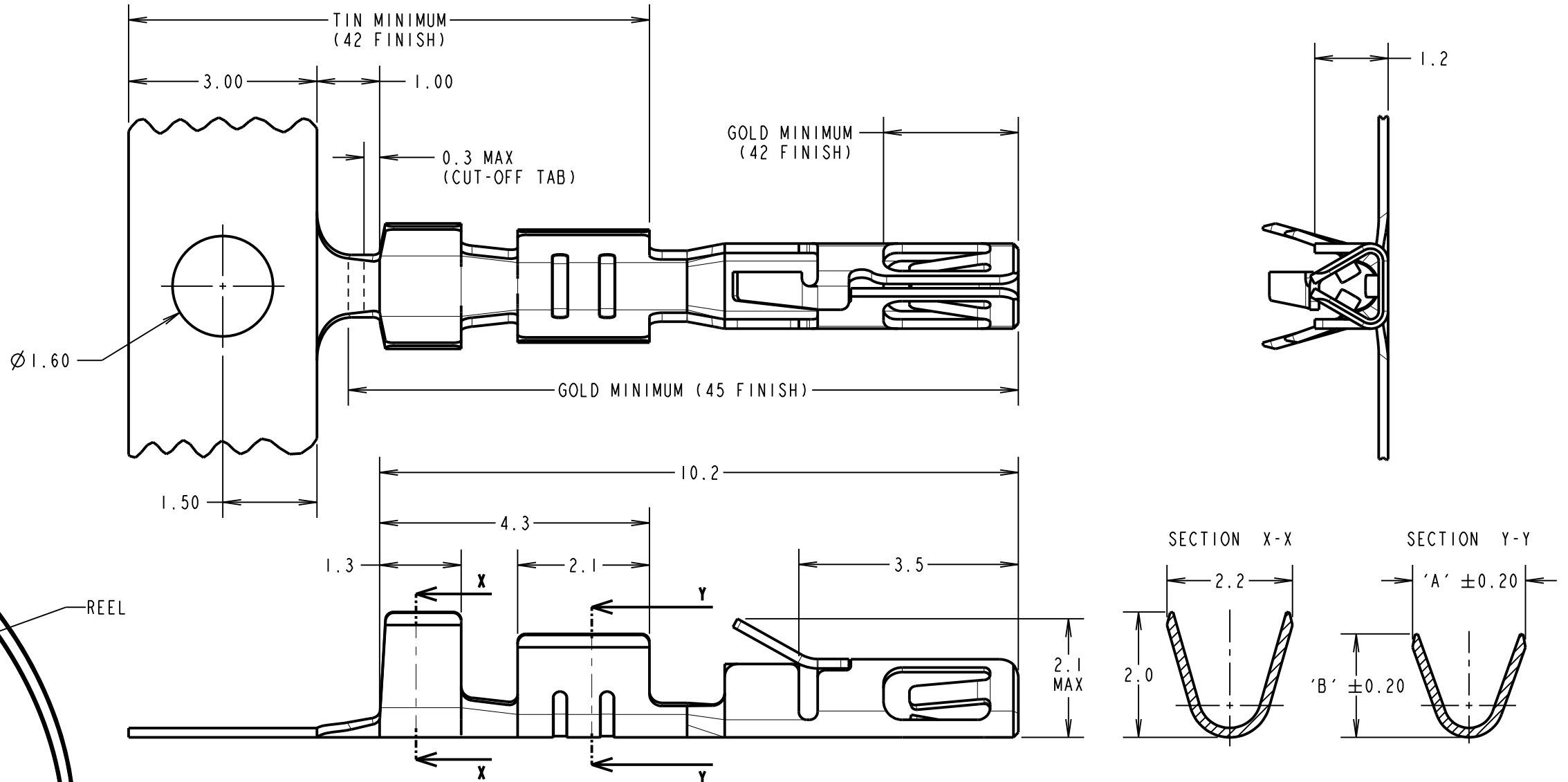
NOT TO SCALE

THIRD ANGLE PROJECTION

ALL DIMENSIONS IN mm

SPECIFICATION:

MATERIAL:
 BERYLLIUM COPPER
FINISH (ALL OVER NICKEL):
 45 = 0.3µm MIN GOLD
 42 = 3µm MIN 100% TIN AND 0.3µm MIN GOLD,
 SELECTIVE PLATE
MECHANICAL:
 INSERTION FORCE = 2.8N MAX, 1.0N MIN
 WITHDRAWAL FORCE = 1.8N MAX, 0.2N MIN
 DURABILITY = 400 OPERATIONS
ENVIRONMENTAL:
 OPERATING TEMPERATURE = -55°C TO +125°C
PACKING:
 REEL (AS SHOWN), 15K/REEL
 FOR COMPLETE CONNECTOR SPECIFICATION, SEE
 COMPONENT SPECIFICATION C040XX (LATEST ISSUE)



NOTES:

- TO BE USED WITH THE FOLLOWING FEMALE HOUSING:
 M80-454XX98 = HOUSING ONLY
 M80-455XX98 = HOUSING + SLOTTED JACKSCREW
 M80-456XX98 = HOUSING + HEX SOCKET JACKSCREW
 M80-457XX98 = HOUSING + REVERSE FIX JACKSCREW
 M80-458XX98 = HOUSING + GUIDE AND BOARD MOUNT
 M80-459XX98 = HOUSING + 10ILOK JACKSCREWS
- RECOMMENDED WIRE TYPE = BS 3G 210 TYPE A,
 WIRE 22-28 AWG, WIRE INSULATION $\phi 0.6\text{mm}$ - $\phi 1.1\text{mm}$.
 STRIP WIRE BY 2.7-3.0mm FOR CRIMPING.
- RECOMMENDED CRIMP HEIGHTS:
 0.76-0.82mm FOR 22-24 AWG CONTACTS
 0.50-0.56mm FOR 26-28 AWG CONTACTS
- SUITABLE FOR PROCESSING WITH LEFT SIDE
 FEED CRIMPING PRESS.
 CONTACT datamate@harwin.com FOR DETAILS.
- CONTACTS ARE AVAILABLE LOOSE, PART NUMBER
 M80-28300XX FOR 24-22 AWG WIRE AND
 M80-28400XX FOR 28-26 AWG WIRE, SUITABLE FOR
 PROCESSING WITH HAND CRIMP TOOL Z80-255.

| PART No. | DIMENSION | |
|-------------|-----------|------|
| | 'A' | 'B' |
| M80-25300XX | 1.80 | 1.65 |
| M80-25400XX | 1.34 | 1.00 |

ORDER CODE:

M80-XXX00XX

WIRE SIZE:

253 = 24-22 AWG (0.22-0.34mm²)
 254 = 28-26 AWG (0.08-0.12mm²)

FINISH:

45 = GOLD ALL OVER
 42 = 100% TIN & GOLD SELECTIVE

| | | | |
|-------------------|------|----------|--------|
| MGP | 8 | 29.01.19 | 21499 |
| NAME | ISS. | DATE | C/NOTE |
| APPROVED: MGP | | | |
| CHECKED: SB | | | |
| DRAWN: B. M. KENT | | | |
| CUSTOMER REF.: | | | |
| ASSEMBLY DRG: | | | |

HARWIN

www.harwin.com
technical@harwin.com

THIS DRAWING AND ANY
 INFORMATION OR DESCRIPTIVE
 MATTER SET OUT HEREON ARE
 CONFIDENTIAL AND COPYRIGHT
 PROPERTY OF THE HARWIN
 GROUP AND MUST NOT BE
 DISCLOSED, LOANED, COPIED
 OR USED FOR MANUFACTURING,
 TENDERING OR FOR ANY
 OTHER PURPOSE WITHOUT
 THEIR WRITTEN PERMISSION.

TOLERANCES
 X. = $\pm 1\text{mm}$
 X.X = $\pm 0.50\text{mm}$
 X.XX = $\pm 0.10\text{mm}$
 X.XXX = $\pm 0.01\text{mm}$
ANGLES = $\pm 5^\circ$
 UNLESS STATED

MATERIAL:

SEE ABOVE

FINISH:

SEE ABOVE

S/AREA:

mm²

TITLE: DATAMATE TRIO-TEK
 FEMALE CRIMP CONTACT REELED
 24-22 AWG & 28-26 AWG

DRAWING NUMBER:

M80-25300XX & M80-25400XX

SHT
 5 OF 5