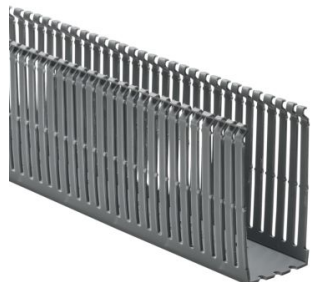


Specification Sheet

Part Number: 184-24000



High Density Slotted Wall Wiring Duct, 2" x 4", Non-Adhesive, PVC, Gray, 30ft/Box

Article Number 184-24000

Type SLHD2X4

Color Gray (GY)

Features & Benefits

- Narrow fingers reduce fanning of the wires to the terminal blocks, presenting a neater appearance.
- Each finger is provided with a double restriction to hold wires in the bottom portion of the duct, allowing for easier installation.
- Mounting holes are uniform in size and are offered every 2 inches to accommodate compact designs and ease installation.
- Optional covers snap on and off easily, and are provided with a non-slip lining that insures the covers remain in place during vibration.

Quantity Per box

Product Description	HellermannTyton Pro-Duct High-Density, Slotted-Wall Wiring Duct features narrow fingers equaling a 2 to 1 finger ratio compared to standard slotted wiring duct. With the narrow fingers, compact designs and components are more easily accommodated.
Short Description	High Density Slotted Wall Wiring Duct, 2" x 4", Non-Adhesive, PVC, Gray, 30ft/Box
Global Part Name	SLHD2X4-PVC-GY
Technical Description	Non-Adhesive
Length L (Imperial)	6.0
Length L (Metric)	1.83
Width W (Imperial)	2.0
Width W (Metric)	50.8
Height H (Imperial)	4.07
Height H (Metric)	103.4
Mounting Hole Centers (Imperial)	2.0
Material	Polyvinylchloride (PVC)
Material Shortcut	PVC

Flammability	Self-Extinguishing
Halogen free	No
Operating Temperature (Metric)	+122°F (+50°C)
Reach Complaint(Article 33)	No
ROHS Complaint	Yes
Certification/Specification WEB	CSA UL EN 50085-2-3_1A EN 50085-1:2005 + A1:2013
UL Recognized (US)	Yes
Package Quantity(Imperial)	30
Package Quantity (Metric)	9.14
Customs Number	3925900000