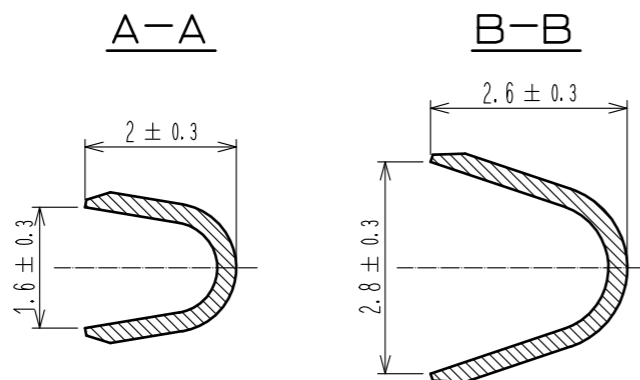
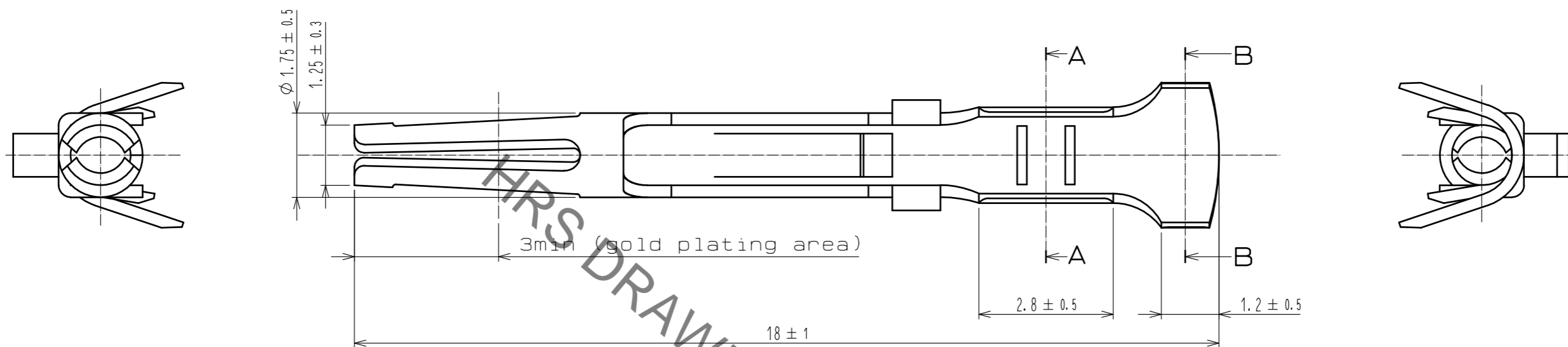


Oct.1.2019 Copyright 2019 HIROSE ELECTRIC CO., LTD. All Rights Reserved.  
 In case of consideration for using Automotive equipment / device which demand high reliability, kindly contact our sales window correspondents.



HRS DRAWING FOR REFERENCE

| 1   | Phosphor bronze | Contact area :gold 0.2 $\mu\text{m}$ min |
|-----|-----------------|--|
|     |                 | Under plating:nickel 2 $\mu\text{m}$ min |
| NO. | MATERIAL        | FINISH . REMARKS                         |

|                                      |  |  |                           |           |                          |                  |         |      |
|--------------------------------------|--|--|---------------------------|-----------|--------------------------|------------------|---------|------|
| UNITS<br>mm                          |  |  | SCALE<br>10:1             | COUNT<br> | DESCRIPTION OF REVISIONS | DESIGNED         | CHECKED | DATE |
| <b>HRS</b> HIROSE ELECTRIC CO., LTD. |  |  | APPROVED : NM. NISHIMATSU | 16.11.25  | DRAWING NO.              | EDC-009356-00-00 |         |      |
|                                      |  |  | CHECKED : NM. NISHIMATSU  | 16.11.25  | PART NO.                 | CD-SC-111        |         |      |
|                                      |  |  | DESIGNED : MO. SHIMOYAMA  | 16.11.25  | CODE NO.                 | CL211-0205-3-00  |         |      |
|                                      |  |  | DRAWN : JY. IGA           | 16.11.25  |                          |                  |         |      |