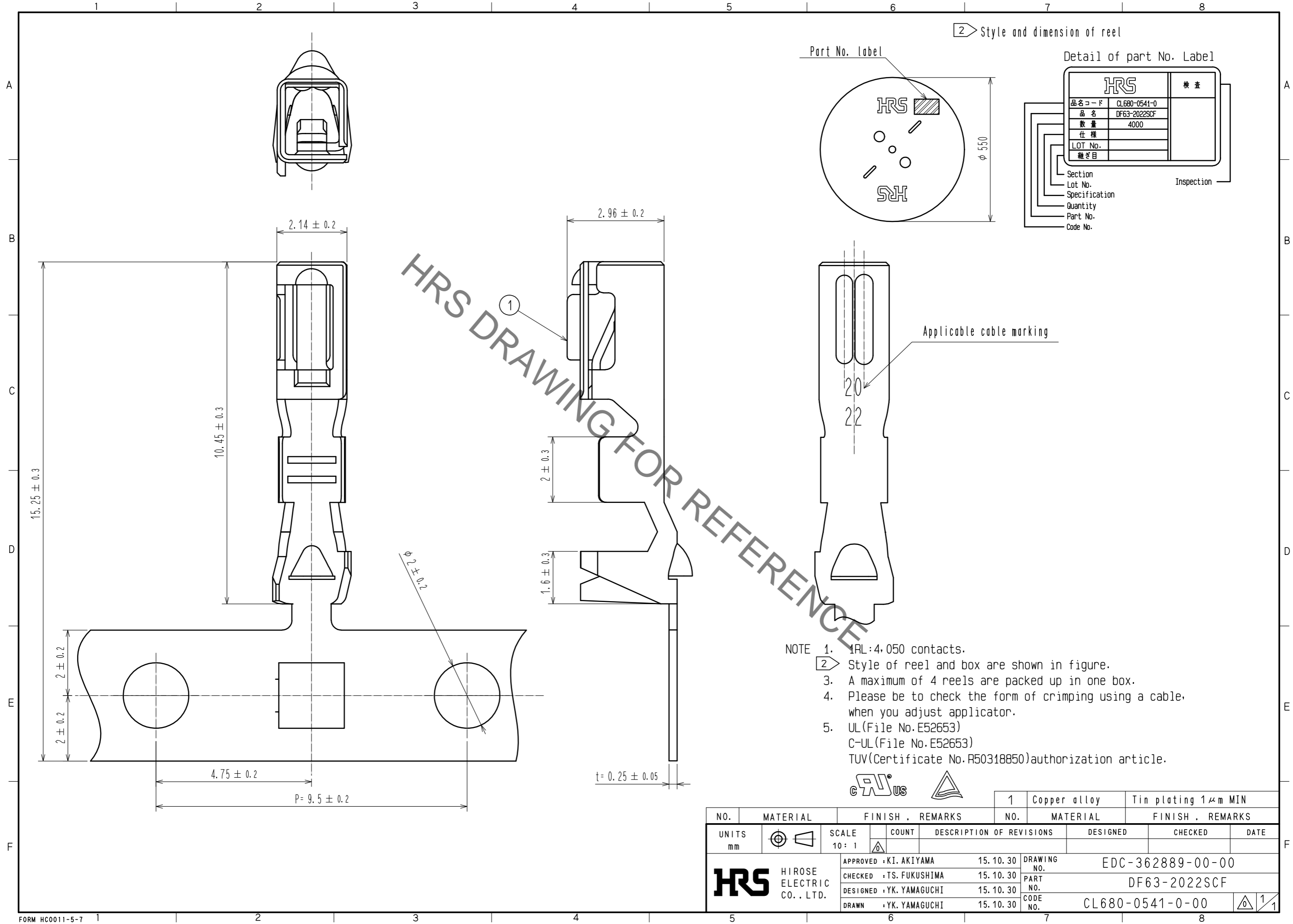


Oct.1.2019 Copyright 2019 HIROSE ELECTRIC CO., LTD. All Rights Reserved.
 In case of consideration for using Automotive equipment / device which demand high reliability, kindly contact our sales window correspondents.



HRS DRAWING FOR REFERENCE

- NOTE
- 1RL:4,050 contacts.
 - 2 Style of reel and box are shown in figure.
 3. A maximum of 4 reels are packed up in one box.
 4. Please be to check the form of crimping using a cable, when you adjust applicator.
 5. UL(File No. E52653)
 C-UL(File No. E52653)
 TUV(Certificate No. R50318850)authorization article.



| NO. | MATERIAL | FINISH . REMARKS | NO. | MATERIAL | FINISH . REMARKS |
|-----|----------|------------------|-----|--------------|---------------------|
| | | | 1 | Copper alloy | Tin plating 1μm MIN |

| UNITS | SCALE | COUNT | DESCRIPTION OF REVISIONS | DESIGNED | CHECKED | DATE |
|--------------------------|-------|-------|--------------------------|------------------------------|---------|------|
| mm | 10:1 | △ | | | | |
| APPROVED : KI. AKIYAMA | | | 15.10.30 | DRAWING NO. EDC-362889-00-00 | | |
| CHECKED : TS. FUKUSHIMA | | | 15.10.30 | PART NO. DF63-2022SCF | | |
| DESIGNED : YK. YAMAGUCHI | | | 15.10.30 | CODE NO. CL680-0541-0-00 | | |
| DRAWN : YK. YAMAGUCHI | | | 15.10.30 | 1/1 | | |