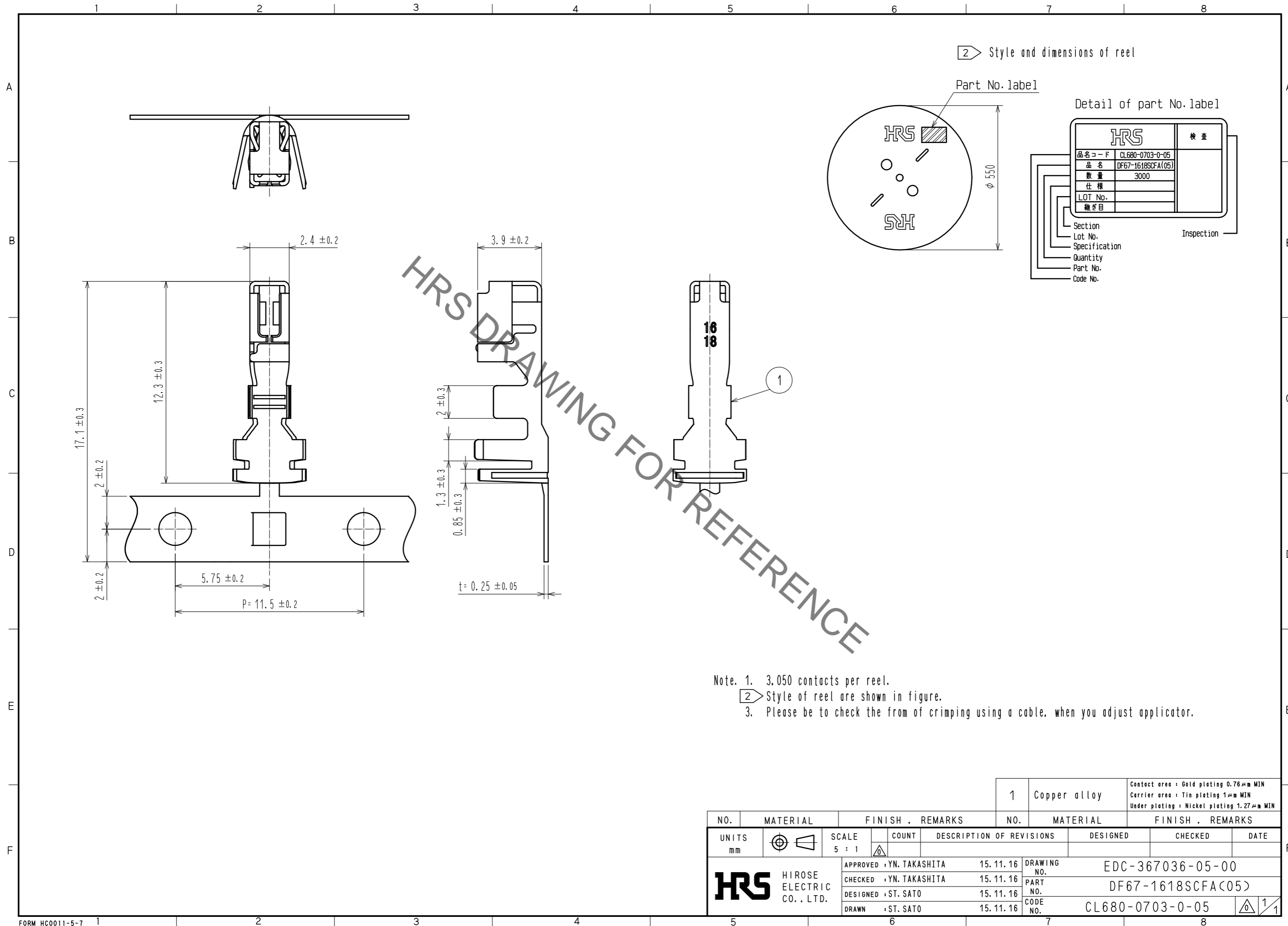


Oct.1.2019 Copyright 2019 HIROSE ELECTRIC CO., LTD. All Rights Reserved.
 In case of consideration for using Automotive equipment / device which demand high reliability, kindly contact our sales window correspondents.



- Note. 1. 3,050 contacts per reel.
 2. Style of reel are shown in figure.
 3. Please be to check the from of crimping using a cable, when you adjust applicator.

NO.		MATERIAL		FINISH . REMARKS		NO.		MATERIAL		FINISH . REMARKS	
		1		Copper alloy				Contact area : Gold plating 0.76μm MIN Carrier area : Tin plating 1μm MIN Under plating : Nickel plating 1.27μm MIN			
UNITS mm		SCALE 5 : 1		COUNT		DESCRIPTION OF REVISIONS		DESIGNED		CHECKED	
HRS		HIROSE ELECTRIC CO., LTD.		APPROVED : YN. TAKASHITA 15.11.16		DRAWING NO. EDC-367036-05-00		DESIGNED		CHECKED	
				CHECKED : YN. TAKASHITA 15.11.16		PART NO. DF67-1618SCFA(05)					
				DESIGNED : ST. SATO 15.11.16		CODE NO. CL680-0703-0-05					
				DRAWN : ST. SATO 15.11.16							