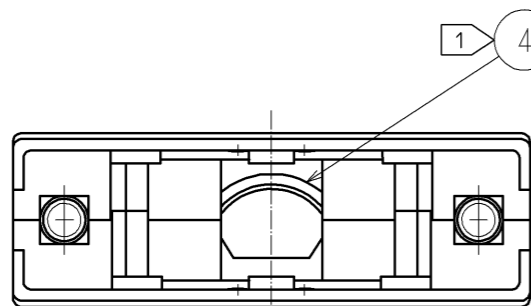
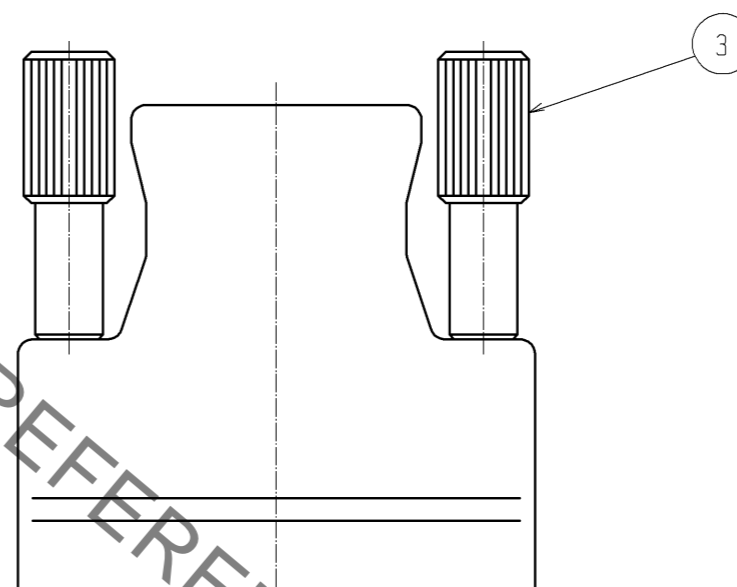
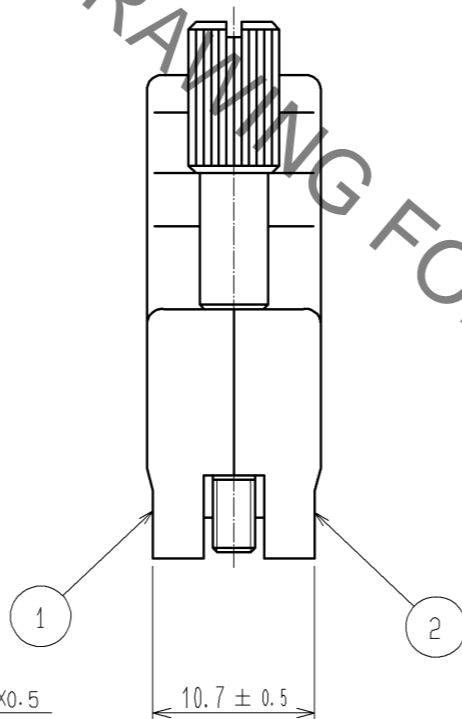
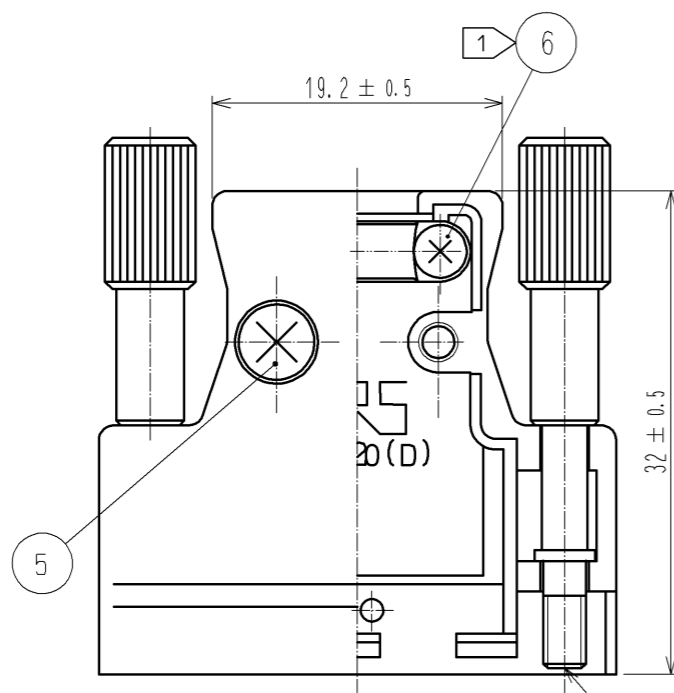
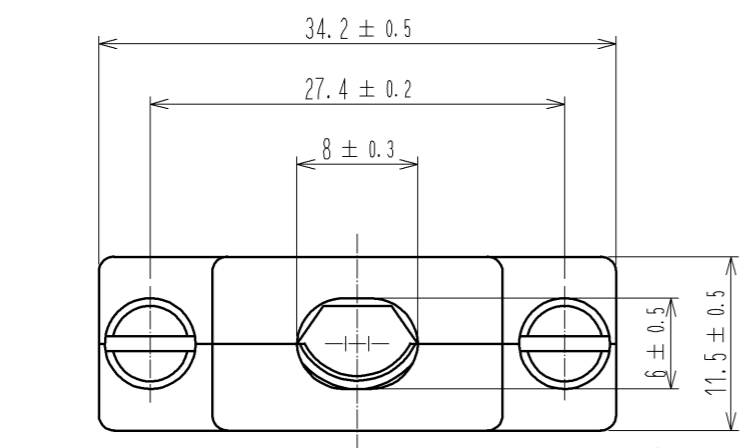


Oct.1.2019 Copyright 2019 HIROSE ELECTRIC CO., LTD. All Rights Reserved.
 In case of consideration for using Automotive equipment / device which demand high reliability, kindly contact our sales window correspondents.



HRS DRAWING FOR REFERENCE

NOTE ① COMPONENTS OF REF. NO. ④ AND ⑥ ARE APPENDED PRODUCTS.

3	STEEL	NICKEL PLATING 5μm min	6	STEEL	NICKEL PLATING 3μm min
2	ZINC ALLOY DIE CASTING	SILVER BURNING COATING	5	BRASS	NICKEL PLATING 3μm min
1	ZINC ALLOY DIE CASTING	SILVER BURNING COATING	4	STAINLESS STEEL	
NO.	MATERIAL	FINISH . REMARKS	NO.	MATERIAL	FINISH . REMARKS

UNITS mm		SCALE 2 : 1	COUNT 	DESCRIPTION OF REVISIONS	DESIGNED	CHECKED	DATE
HIROSE ELECTRIC CO., LTD.				APPROVED : YH. ENAMI 08.12.09	DRAWING NO. EDC3-040768-01		
				CHECKED : HO. MIWA 08.12.09	PART NO. DX-20-CV1		
				DESIGNED : YH. MAMADA 08.12.08	CODE NO. CL230-0054-8-00		
				DRAWN : YH. MAMADA 08.12.08	1/1		