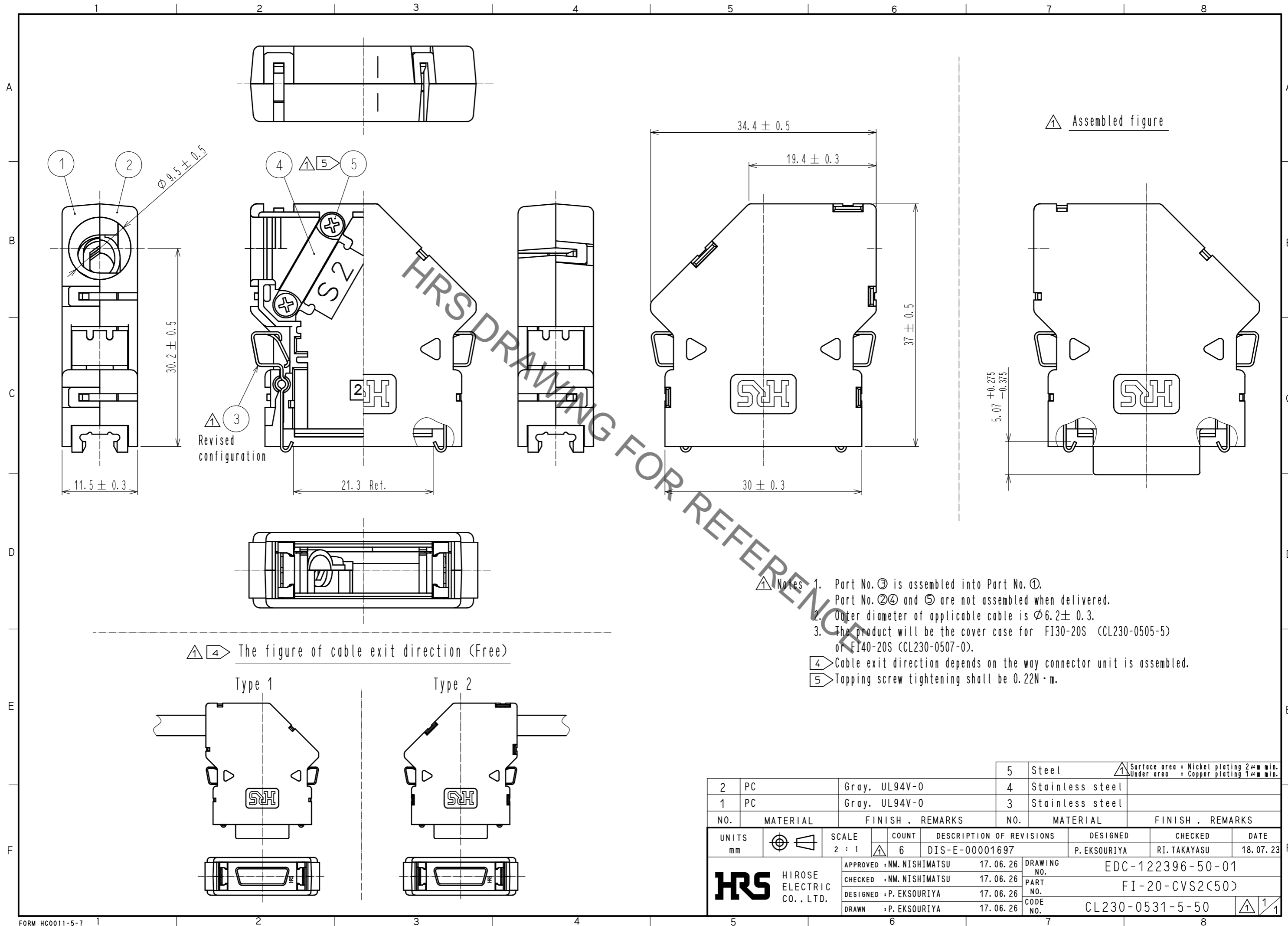
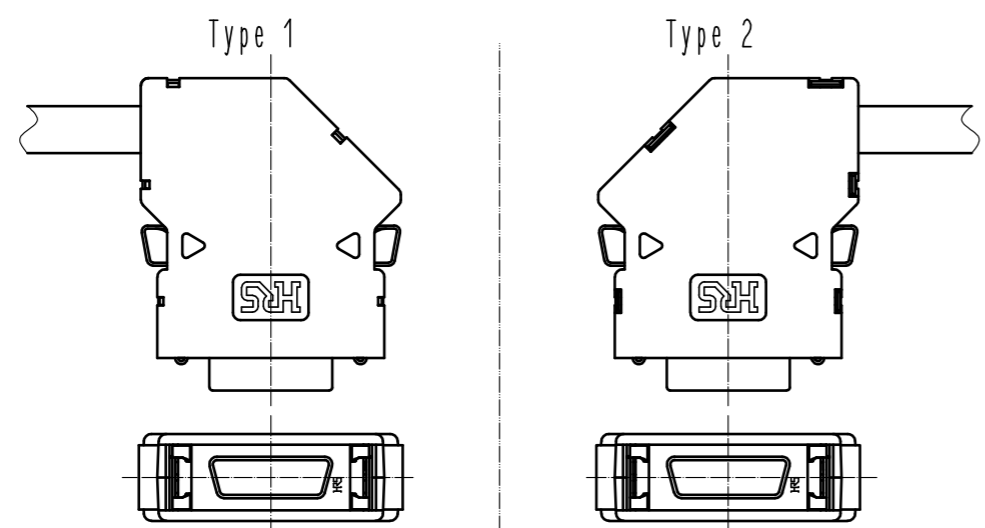


Oct.1.2019 Copyright 2019 HIROSE ELECTRIC CO., LTD. All Rights Reserved.  
 In case of consideration for using Automotive equipment / device which demand high reliability, kindly contact our sales window correspondents.



④ The figure of cable exit direction (Free)



- Notes
- Part No. ③ is assembled into Part No. ①.  
Part No. ②④ and ⑤ are not assembled when delivered.
  - Outer diameter of applicable cable is  $\phi 6.2 \pm 0.3$ .
  - The product will be the cover case for FI30-20S (CL230-0505-5) or FI40-20S (CL230-0507-0).
  - Cable exit direction depends on the way connector unit is assembled.
  - Tapping screw tightening shall be  $0.22N \cdot m$ .

2	PC	Gray, UL94V-0	5	Steel	① Surface area : Nickel plating 2 $\mu$ m min. Under area : Copper plating 1 $\mu$ m min.
1	PC	Gray, UL94V-0	4	Stainless steel	
			3	Stainless steel	
NO.	MATERIAL	FINISH . REMARKS	NO.	MATERIAL	FINISH . REMARKS
UNITS		SCALE	COUNT	DESCRIPTION OF REVISIONS	
mm		2 : 1	④ 6	DIS-E-00001697	
APPROVED : NM. NISHIMATSU 17.06.26			DESIGNED : P. EKSOURIYA 18.07.23		
CHECKED : NM. NISHIMATSU 17.06.26			CHECKED : RI. TAKAYASU		
DESIGNED : P. EKSOURIYA 17.06.26			DATE		
DRAWN : P. EKSOURIYA 17.06.26			DRAWING NO. EDC-122396-50-01		
HIROSE ELECTRIC CO., LTD.			PART NO. FI-20-CVS2(50)		
			CODE NO. CL230-0531-5-50		