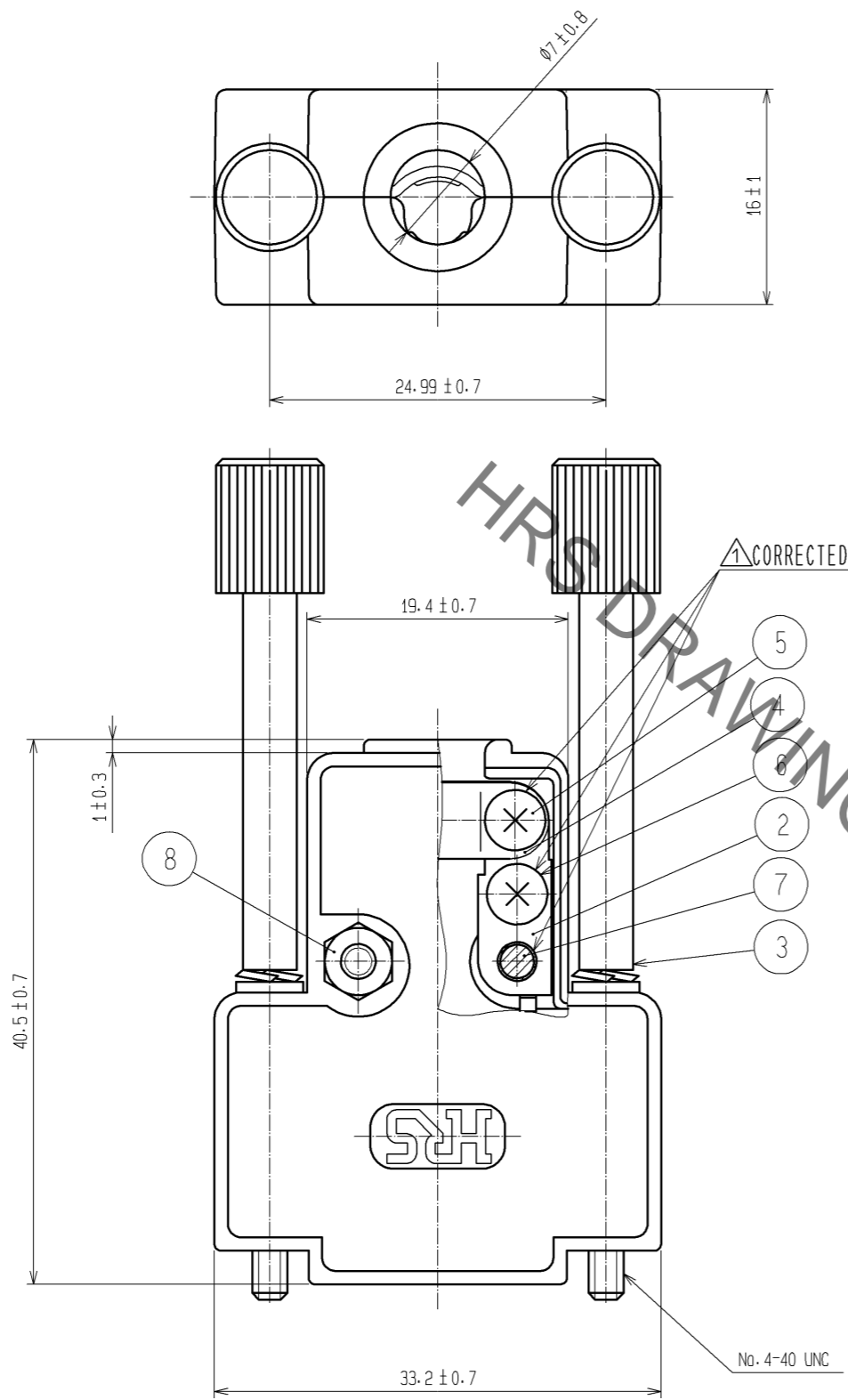


Oct.1.2019 Copyright 2019 HIROSE ELECTRIC CO., LTD. All Rights Reserved.
 In case of consideration for using Automotive equipment / device which demand high reliability, kindly contact our sales window correspondents.



NO.	MATERIAL	FINISH . REMARKS	NO.	MATERIAL	FINISH . REMARKS
4	STEEL	NICKEL PLATING	7	STEEL	PAN HEAD MACHINE SCREW WITH SPRING WASHER M2.6×0.45×14
3	STEEL	NICKEL PLATING	6	STEEL	PAN HEAD MACHINE SCREW WITH SPRING WASHER M2.6×0.45×5 △
2	STEEL	NICKEL PLATING	5	STEEL	PAN HEAD MACHINE SCREW WITH SPRING WASHER M2.6×0.45×8
1	ABS	CHROMIUM PLATING OVER NICKEL PLATING UL94HB	8	STEEL	HEXAGON NUT M2.6×0.45 NICKEL PLATING

UNITS mm		SCALE 2 : 1	COUNT 2	DESCRIPTION OF REVISIONS DIS-E-002509	DESIGNED MT. ITANO	CHECKED KI. NAGANUMA	DATE 08.10.21
APPROVED : YH. ENAMI 08.09.05				DRAWING NO. EDC3-027854-01			
CHECKED : HO. MIWA 08.09.05				PART NO. HDE-CTH1(4-40)(10)			
DESIGNED : YH. MAMADA 08.09.05				CODE NO. CL211-0865-2-10 △ 1/1			
DRAWN : YH. MAMADA 08.09.05							