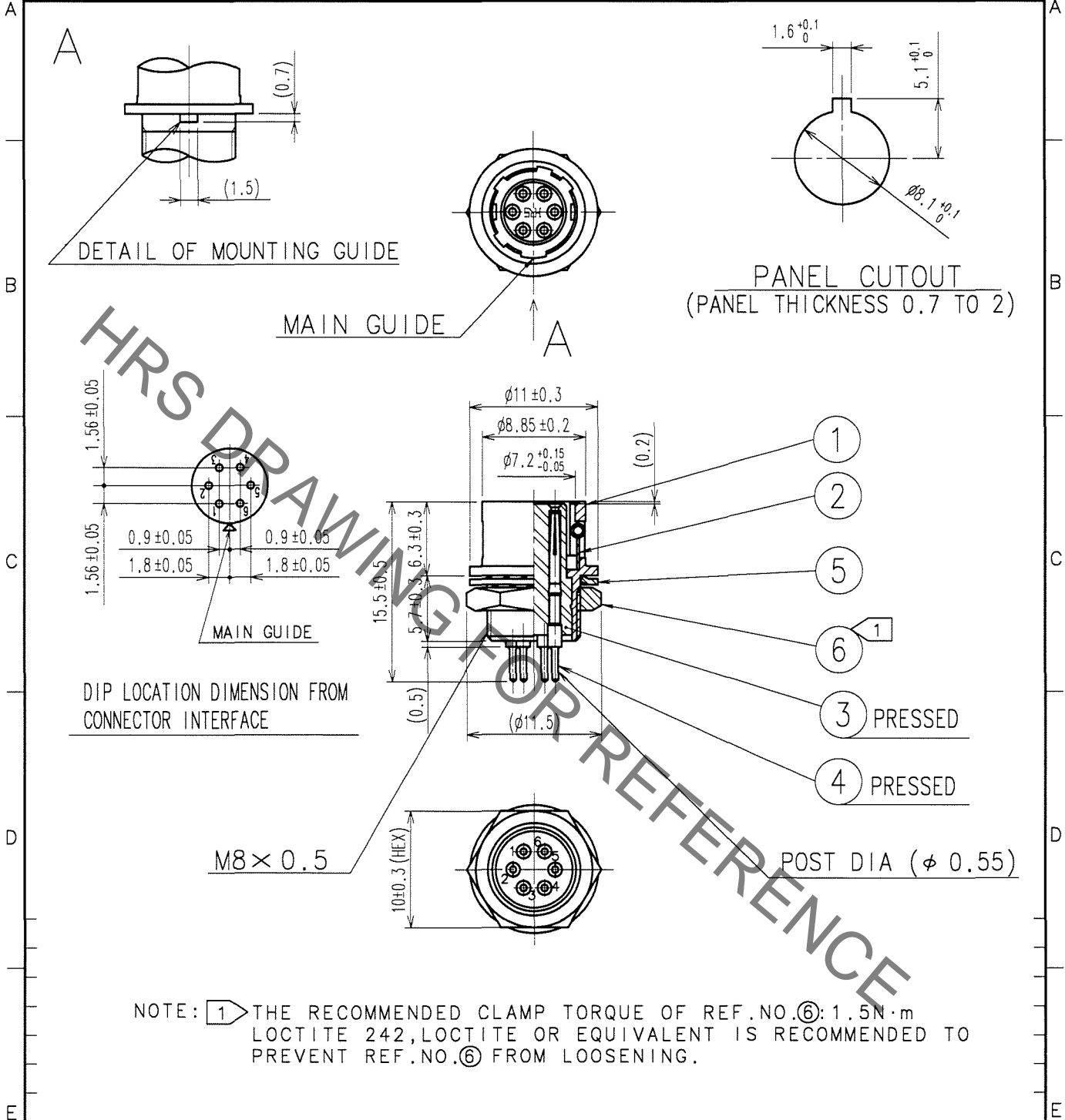


Oct.1.2019 Copyright 2019 HIROSE ELECTRIC CO., LTD. All Rights Reserved.
 In case of consideration for using Automotive equipment / device which demand high reliability, kindly contact our sales window correspondents.

1		2		3		4			
COUNT	DESCRIPTION OF REVISIONS	BY	CHKD	DATE	COUNT	DESCRIPTION OF REVISIONS	BY	CHKD	DATE
△					△				
△					△				
△					△				



NO.	MATERIAL	FINISH, REMARKS	NO.	MATERIAL	FINISH, REMARKS
3	POLYAMIDE	(BLACK) UL94V-1	6	BRASS	NICKEL PLATED
2	STAINLESS STEEL		5	PHOSPHOR BRONZE	NICKEL PLATED
1	ZINC ALLOY	MATTE FINISH NICKEL PLATED	4	BERYLLIUM COPPER	GOLD PLATED 0.2μm MIN

CODE NO. (OLD)	DRAWN	DESIGNED	CHECKED	APPROVED	RELEASED
	<i>J. Horii</i>	<i>J. Horii</i>	/	<i>M. Sato</i>	
	<i>06.07.26</i>	<i>06.07.26</i>	/	<i>06.07.26</i>	

 SCALE 2 : 1 UNITS mm	DRAWING NO. EDC4-009048-73 HIROSE ELECTRIC CO., LTD.	PART NO. HR10-7R-6SA(73) CODE NO. CL110-0050-4-73	1 1
-----------------------------------	--	--	--------

TO
R