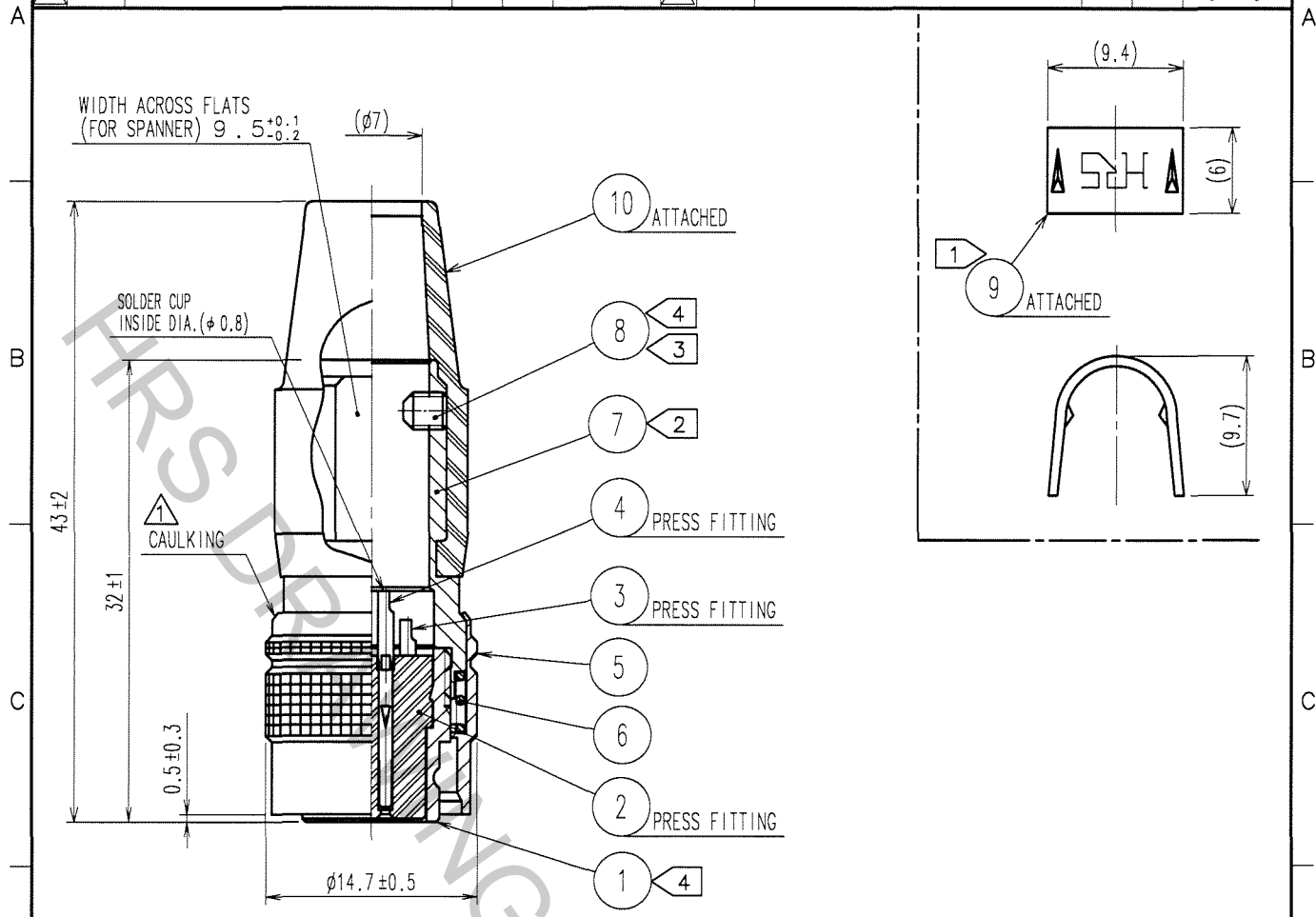


Jan.1.2019 Copyright 2019 HIROSE ELECTRIC CO., LTD. All Rights Reserved.  
 In case that the application demands a high level of reliability, such as automotive,  
 please contact a company representative for further information.

1			2			3			4		
COUNT	DESCRIPTION OF REVISIONS	BY	CHKD	DATE	COUNT	DESCRIPTION OF REVISIONS	BY	CHKD	DATE		
1	DIS-C-000409	D.M	M.S	06.12.19							



- NOTE ① HAND CRIMPING TOOL, REF. NO. ⑨: HR10A-TC-02 (CL150-0041-2)  
 THE HOLE DIAMETER FOR CRIMPING:  $\phi 7.0$   
 ② THE RECOMMENDED CLAMP TORQUE, REF. NO. ⑦: 2-2.5 N·m.  
 ③ ACROSS FLATS HEXAGON HEAD OF REF. NO. ⑧: 1.27  
 THE RECOMMENDED CLAMP TORQUE, REF. NO. ⑧: 0.3-0.4N·m.  
 ④ LOCTITE 242, HENKEL JAPAN OR EQUIVALENT IS RECOMMENDED TO PREVENT REF. NO. ① AND ⑧ FROM LOOSENING.  
 5 ONE EXAMPLE OF THE ROTATION OF REF. NO. ⑦ TO REF. NO. ① IS SHOWN.

5	BRASS	MATTE FINISH NICKEL PLATED	10	CR	(BLACK)
4	PHOSPHOR BRONZE	SILVER PLATING 2μm min.	9	BRASS	
3	PHOSPHOR BRONZE		8	STEEL	NICKEL PLATING
2	POLYAMIDE	(BLACK) UL94V-0	7	BRASS	NICKEL PLATING
1	ZINC ALLOY	MATTE FINISH NICKEL PLATED	6	STEEL	NICKEL PLATING

NO.	MATERIAL	FINISH, REMARKS	NO.	MATERIAL	FINISH, REMARKS
CODE NO. (OLD)	CL		DRAWN	DESIGNED	CHECKED
			D. MATSUNE	D. MATSUNE	E. KUNII
			'05.10.01	'05.10.01	'05.10.03
					APPROVED
					M. SATO
					'05.10.14
					RELEASED

TO
R

SACLE 2 : 1 UNITS mm	DRAWING NO.	PART NO.
	EDC4-021367-73	HR10A-10P-10S(73)
HRS HIROSE ELECTRIC CO., LTD.	CODE NO.	1/1
	CL110-0408-6-73	