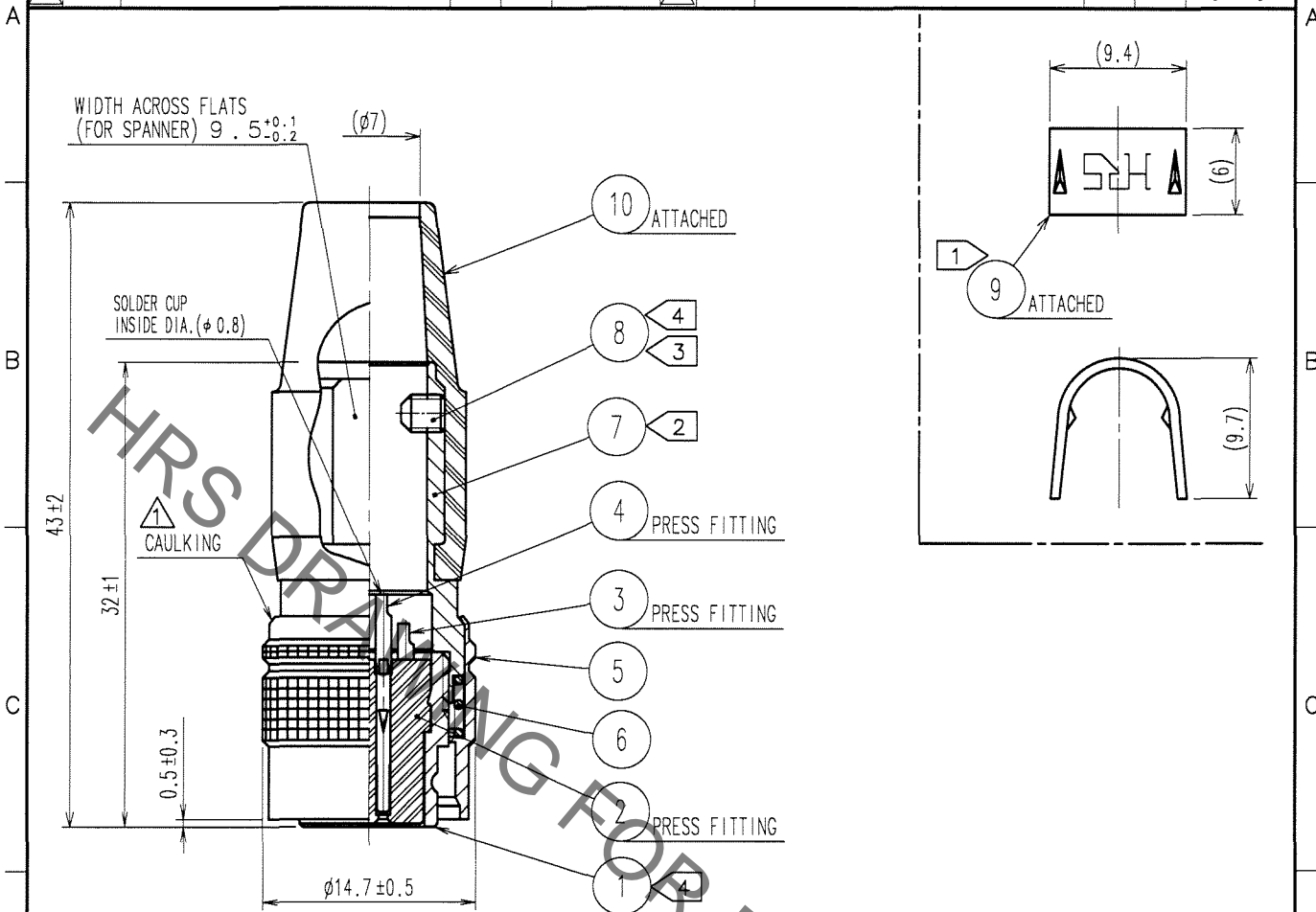


Oct.1.2019 Copyright 2019 HIROSE ELECTRIC CO., LTD. All Rights Reserved.
In case of consideration for using Automotive equipment / device which demand high reliability, kindly contact our sales window correspondents.

1		2			3			4		
COUNT	DESCRIPTION OF REVISIONS	BY	CHKD	DATE	COUNT	DESCRIPTION OF REVISIONS	BY	CHKD	DATE	
1	DIS-C-000409	D.M	M.S	06.12.19						



- NOTE
- ① HAND CRIMPING TOOL, REF. NO. ⑨ : HR10A-TC-02 (CL150-0041-2)
THE HOLE DIAMETER FOR CRIMPING : $\phi 7.0$
 - ② THE RECOMMENDED CLAMP TORQUE, REF. NO. ⑦ : 2-2.5 N · m.
 - ③ ACROSS FLATS HEXAGON HEAD OF REF. NO. ⑧ : 1.27
THE RECOMMENDED CLAMP TORQUE, REF. NO. ⑧ : 0.3-0.4N · m.
 - ④ LOCTITE 242, HENKEL JAPAN OR EQUIVALENT IS RECOMMENDED TO PREVENT REF. NO. ① AND ⑧ FROM LOOSENING.
 - ⑤ ONE EXAMPLE OF THE ROTATION OF REF. NO. ⑦ TO REF. NO. ① IS SHOWN.

5	BRASS	MATTE FINISH NICKEL PLATED	10	CR	(BLACK)
4	PHOSPHOR BRONZE	SILVER PLATING 2 μ m min.	9	BRASS	
3	PHOSPHOR BRONZE		8	STEEL	NICKEL PLATING
2	POLYAMIDE	(BLACK) UL94V-0	7	BRASS	NICKEL PLATING
1	ZINC ALLOY	MATTE FINISH NICKEL PLATED	6	STEEL	NICKEL PLATING
NO.	MATERIAL	FINISH, REMARKS	NO.	MATERIAL	FINISH, REMARKS

CODE NO. (OLD)	DRAWN	DESIGNED	CHECKED	APPROVED	RELEASED
CL	D.MATSUNE	D.MATSUNE	E.KUNII	M.SATO	
	'05.10.01	'05.10.01	'05.10.03	'05.10.14	

 SACLE 2 : 1 UNITS mm	DRAWING NO.	PART NO.
	EDC4-021367-73	HR10A-10P-10S(73)
 HRS HIROSE ELECTRIC CO., LTD.	CODE NO.	
	CL110-0408-6-73	

TO
R