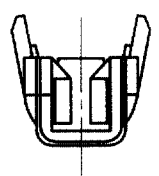
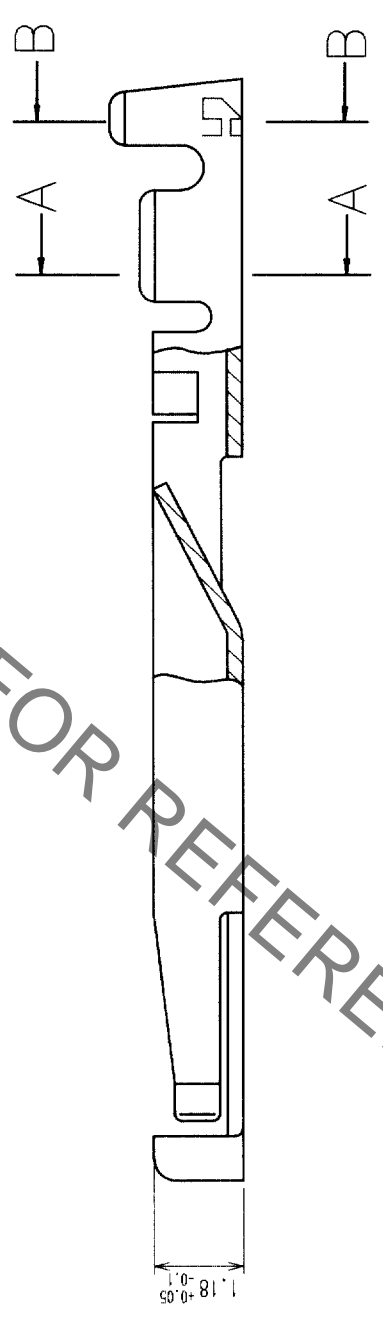
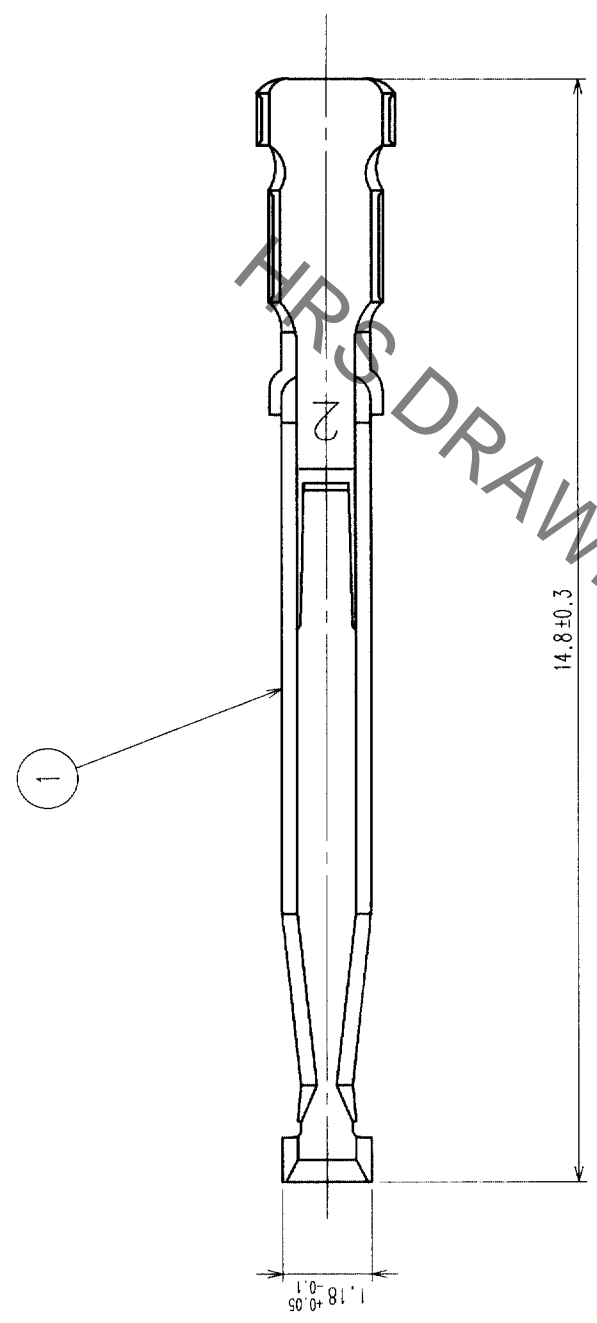
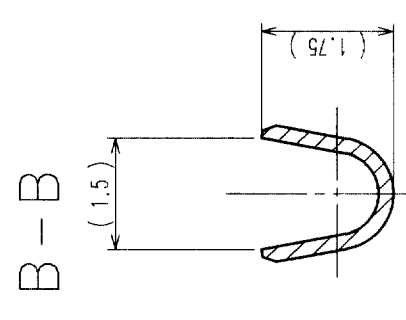
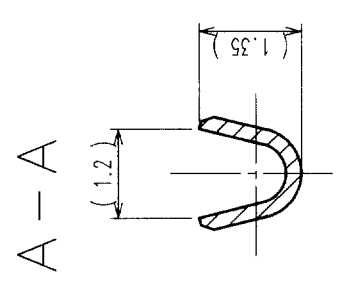


COUNT	DESCRIPTION OF REVISIONS	BY	CHKD	DATE	COUNT	DESCRIPTION OF REVISIONS	BY	CHKD	DATE
△					△				
△					△				
△					△				



- NOTE
- 1 APPLICABLE WIRE: AWG#24-28(JACKET DIAMETER φ1.15 MAX)
  - 2 APPLICABLE CRIMPING TOOL: HR22-TA2428HC(CL150-0200-4)
  - 3 APPLICABLE CRIMP CONTACT EXTRACTION TOOL: RP6-SC-TP(CL150-0039-0)
  - 4 A PACKAGE CONTAINING 100 PIECES.

1		PHOSPHOR BRONZE SILVER PLATED		FINISH, REMARKS		MATERIAL		FINISH, REMARKS	
NO.	MATERIAL	FINISH, REMARKS	NO.	MATERIAL	CHECKED	DESIGNED	APPROVED	RELEASED	
CODE NO. (OLD)		DRAWN		DESIGNED		APPROVED		RELEASED	
		G. Motoki		H. Zemba		M. Sato		M. Yoshida	
		99.10.06		99.10.06		99.10.06		99.10.07	
DRAWING NO.		PART NO.							
EDC3-044336		HR22-SC-122							
SCALE		UNITS							
10 : 1		mm							
HIROSE ELECTRIC CO., LTD		CL122-0016-6							

TO R (USA)