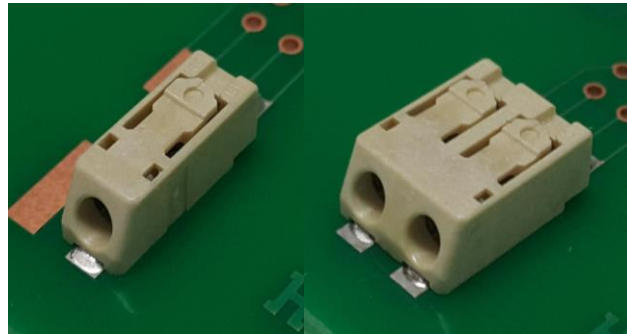




# KN27 Series

HK-E-16006P

## Cable Insertion Type Connector for LED Lighting module

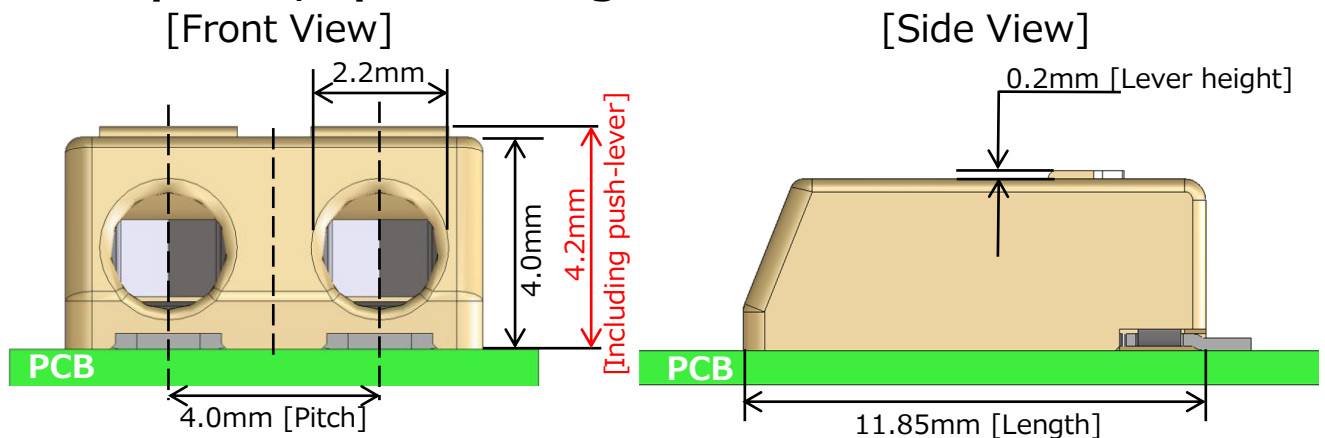


### ◆ Features

1. Low profile, Space saving
  - Height : 4.2mm, length : 11.85mm
2. High workability by user-friendly design
  - Easy cable insertion & extraction
  - Cable insertion design provides easy cable connection
3. Environmental Compliance
  - RoHS compliance, Halogen free products\*
4. Safety
  - UL, C-UL certified

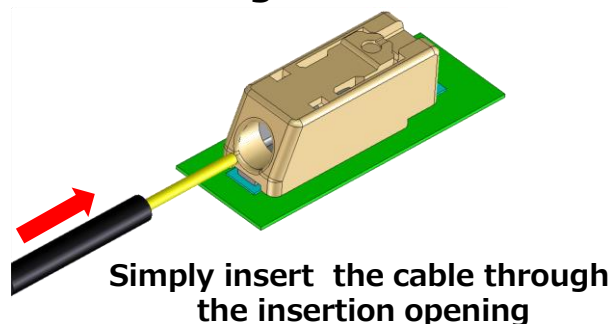
\*This product satisfies halogen free requirements defined as 900ppm maximum chlorine, 900ppm maximum bromine, and 1500ppm maximum total of chlorine and bromine.

### ◆ Low profile, Space saving

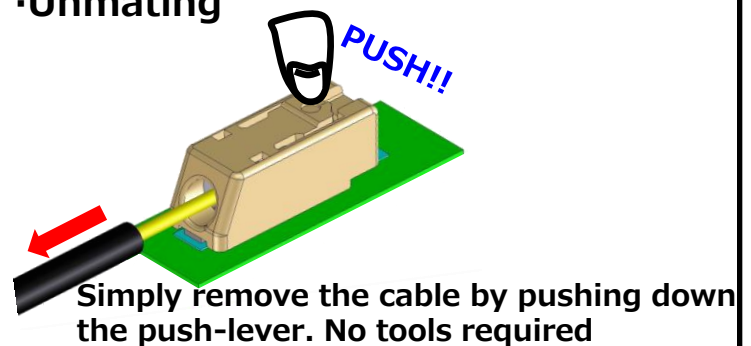


### ◆ Easy Handling

- Mating



- Unmating



※Specifications herein are subject to change without notice. Contact Hirose for latest specifications, drawings or availabilities.