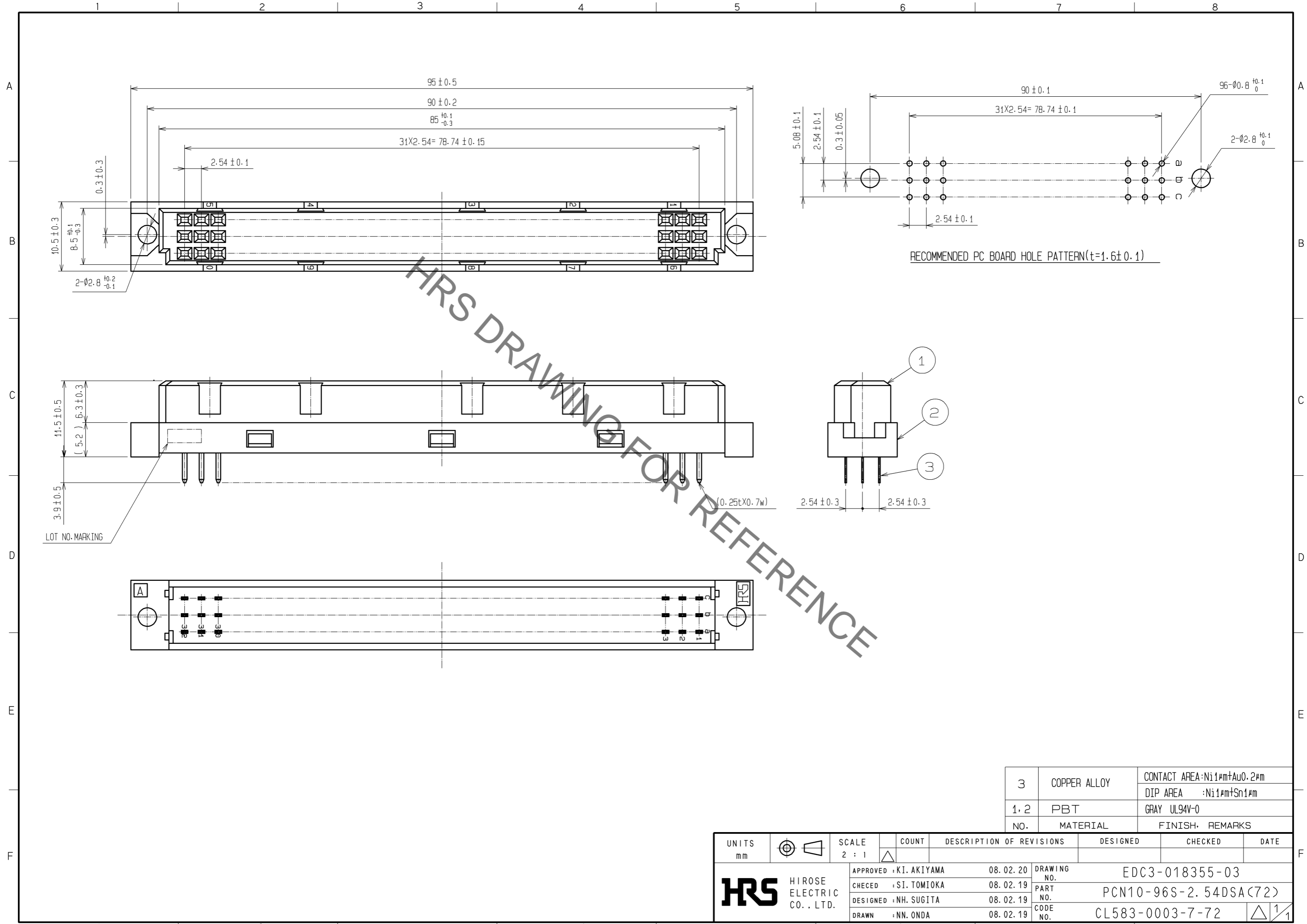


Oct.1.2019 Copyright 2019 HIROSE ELECTRIC CO., LTD. All Rights Reserved.  
 In case of consideration for using Automotive equipment / device which demand high reliability, kindly contact our sales window correspondents.



HRS DRAWING FOR REFERENCE

3	COPPER ALLOY	CONTACT AREA: Ni1 $\mu$ m+Au0.2 $\mu$ m DIP AREA : Ni1 $\mu$ m+Sn1 $\mu$ m
1, 2	PBT	GRAY UL94V-0
NO.	MATERIAL	FINISH, REMARKS

UNITS	SCALE	COUNT	DESCRIPTION OF REVISIONS	DESIGNED	CHECKED	DATE
mm	2 : 1	△				
APPROVED : KI. AKIYAMA			08.02.20	DRAWING NO. EDC3-018355-03		
CHECKED : SI. TOMIOKA			08.02.19	PART NO. PCN10-96S-2.54DSA(72)		
DESIGNED : NH. SUGITA			08.02.19	CODE NO. CL583-0003-7-72		
DRAWN : NN. ONDA			08.02.19	△ 1/1		