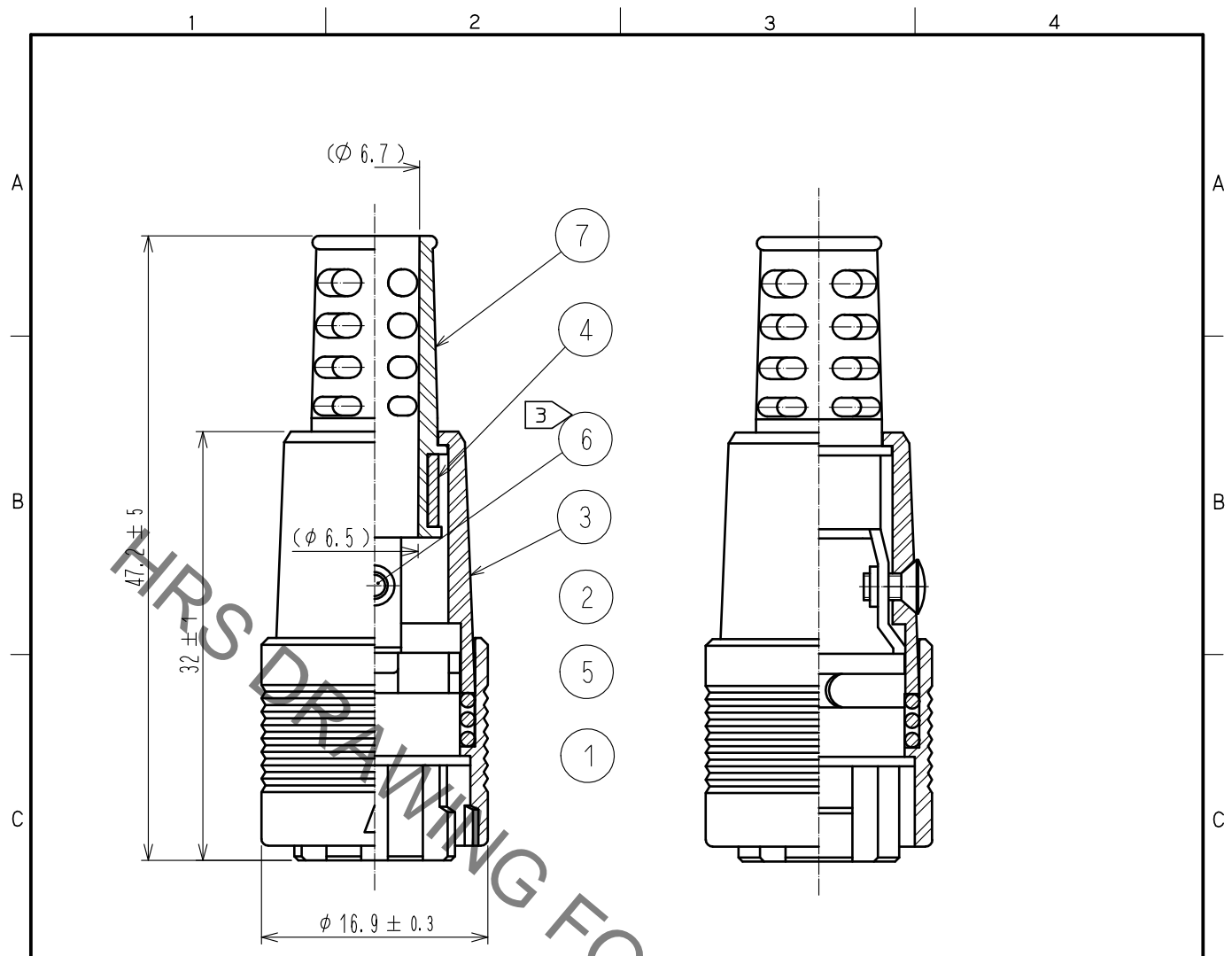
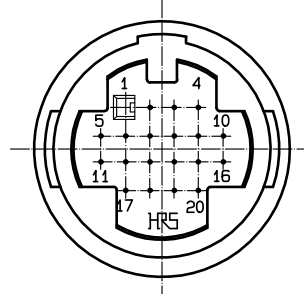


Oct.1.2019 Copyright 2019 HIROSE ELECTRIC CO., LTD. All Rights Reserved.
 In case of consideration for using Automotive equipment / device which demand high reliability, kindly contact our sales window correspondents.



- Notes
- 1 Applicable crimping contact :
 RP19-SC-222 (CL113-0266-2)
 (Applicable wire AWG #24 TO #30)
 - 2 Applicable crimp contact crimping tool :
 RP13A-TC-02 (CL150-0071-3)
 Applicable crimp contact extraction tool :
 RP6-SC-TP (CL150-0039-0)
 - 3 The recommended tightening torque of Ref.No. ⑥ shall be 0.2 N·m.
 - 4 This product is delivered disassembled.
 - 5 The cable pull and twisting strength and other characteristics may differ, depending on the cable structure, please confirm before the use.



| 4 | Brass | | | 7 | Polyvinylchloride | (Black) UL94V-0 | |
|-----|---------------|-----------------|---------|-----|-------------------|---|---------|
| 3 | Polycarbonate | (Black) UL94V-0 | | 6 | Brass | Black chromate treatment (Trivalent chromium) JIS B1111 M2X0.4X4 | |
| 2 | Polycarbonate | (Black) UL94V-0 | | 5 | Steel | Nickel plating | |
| 1 | Polycarbonate | (Black) UL94V-0 | | | | | |
| NO. | MATERIAL | FINISH | REMARKS | NO. | MATERIAL | FINISH | REMARKS |

| | | | | | | | |
|---------------------------|--|----------------|-----------|--|--|---------|------|
| UNITS mm | | SCALE 2 : 1 | COUNT | DESCRIPTION OF REVISIONS | DESIGNED | CHECKED | DATE |
| HIROSE ELECTRIC CO., LTD. | | | | APPROVED : EJ. KUNII 16.05.31 CHECKED : EJ. KUNII 16.05.31 DESIGNED : MM. ISHII 16.05.31 DRAWN : MM. ISHII 16.05.31 | DRAWING NO. EDC-023026-71-00 PART NO. RP13A-12PH-20SC(71) CODE NO. CL113-0217-7-71 | | |