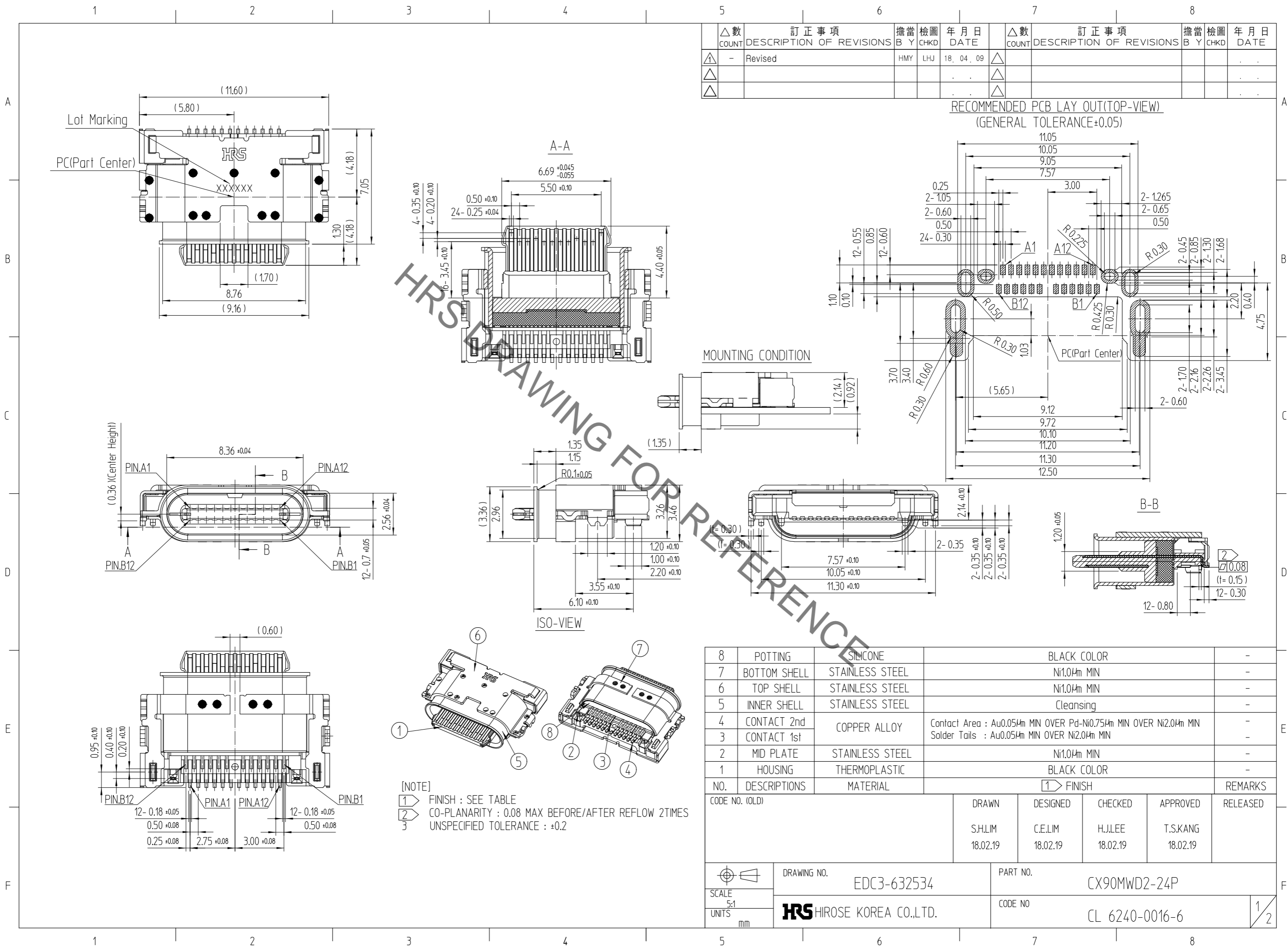


May.1.2020 Copyright 2020 HIROSE ELECTRIC CO., LTD. All Rights Reserved.
In case of consideration for using Automotive equipment / device which demand high reliability, kindly contact our sales window correspondents.



△數 COUNT	訂正事項 DESCRIPTION OF REVISIONS	擔當 B Y	檢圖 CHKD	年月日 DATE	△數 COUNT	訂正事項 DESCRIPTION OF REVISIONS	擔當 B Y	檢圖 CHKD	年月日 DATE
△	- Revised	HMY	LHJ	18. 04. 09	△				
△					△				
△					△				

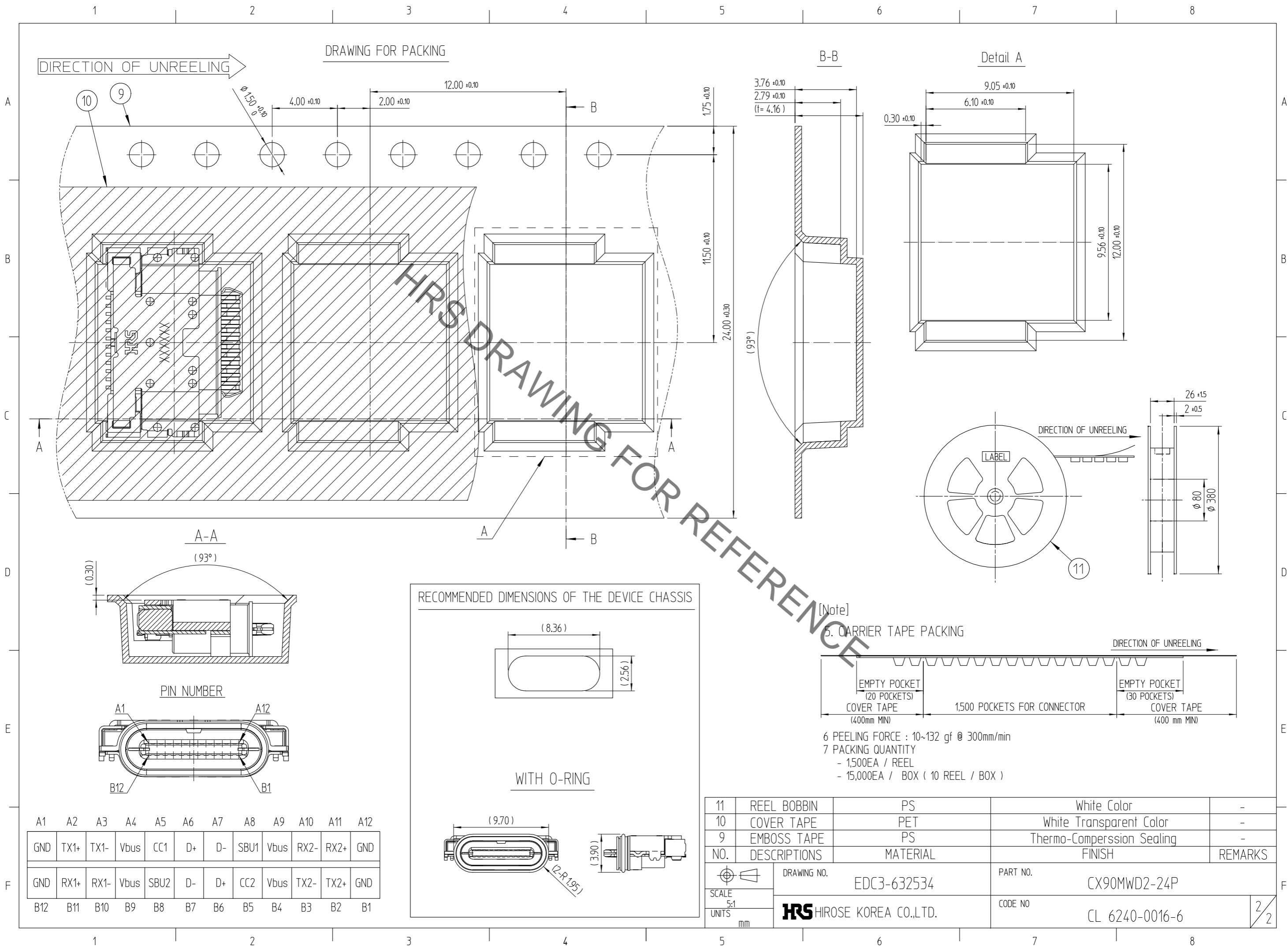
NO.	DESCRIPTIONS	MATERIAL	FINISH	REMARKS
8	POTTING	SILICONE	BLACK COLOR	-
7	BOTTOM SHELL	STAINLESS STEEL	Ni1.0μm MIN	-
6	TOP SHELL	STAINLESS STEEL	Ni1.0μm MIN	-
5	INNER SHELL	STAINLESS STEEL	Cleansing	-
4	CONTACT 2nd	COPPER ALLOY	Contact Area : Au0.05μm MIN OVER Pd-Ni0.75μm MIN OVER Ni2.0μm MIN Solder Tails : Au0.05μm MIN OVER Ni2.0μm MIN	-
3	CONTACT 1st			-
2	MID PLATE	STAINLESS STEEL	Ni1.0μm MIN	-
1	HOUSING	THERMOPLASTIC	BLACK COLOR	-

[NOTE]
 ① FINISH : SEE TABLE
 ② CO-PLANARITY : 0.08 MAX BEFORE/AFTER REFLOW 2TIMES
 ③ UNSPECIFIED TOLERANCE : ±0.2

CODE NO. (OLD)	DRAWN	DESIGNED	CHECKED	APPROVED	RELEASED
	S.H.LIM 18.02.19	C.E.LIM 18.02.19	H.J.LEE 18.02.19	T.S.KANG 18.02.19	

DRAWING NO. EDC3-632534	PART NO. CX90MWD2-24P
SCALE 5:1 UNITS mm	CODE NO. CL 6240-0016-6
HRS HIROSE KOREA CO.,LTD.	

May.1.2020 Copyright 2020 HIROSE ELECTRIC CO., LTD. All Rights Reserved.
 In case of consideration for using Automotive equipment / device which demand high reliability, kindly contact our sales window correspondents.



DRAWING FOR PACKING

B-B

Detail A

HRS DRAWING FOR REFERENCE

RECOMMENDED DIMENSIONS OF THE DEVICE CHASSIS

[Note]

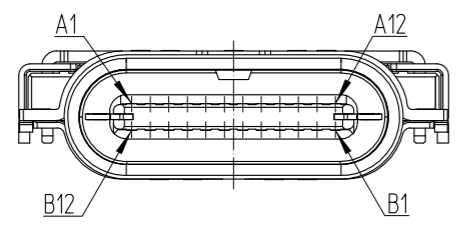
5. CARRIER TAPE PACKING

- 6 PEELING FORCE : 10~132 gf @ 300mm/min
- 7 PACKING QUANTITY
- 1,500EA / REEL
- 15,000EA / BOX (10 REEL / BOX)

11	REEL BOBBIN	PS	White Color	-
10	COVER TAPE	PET	White Transparent Color	-
9	EMBOSS TAPE	PS	Thermo-Comperssion Sealing	-
NO.	DESCRIPTIONS	MATERIAL	FINISH	REMARKS
	DRAWING NO.	EDC3-632534		PART NO.
	SCALE	5:1		CODE NO.
	UNITS	mm		CL 6240-0016-6
		HRS HIROSE KOREA CO.,LTD.		2/2

A1	A2	A3	A4	A5	A6	A7	A8	A9	A10	A11	A12
GND	TX1+	TX1-	Vbus	CC1	D+	D-	SBU1	Vbus	RX2-	RX2+	GND
GND	RX1+	RX1-	Vbus	SBU2	D-	D+	CC2	Vbus	TX2-	TX2+	GND
B12	B11	B10	B9	B8	B7	B6	B5	B4	B3	B2	B1

PIN NUMBER



WITH O-RING

