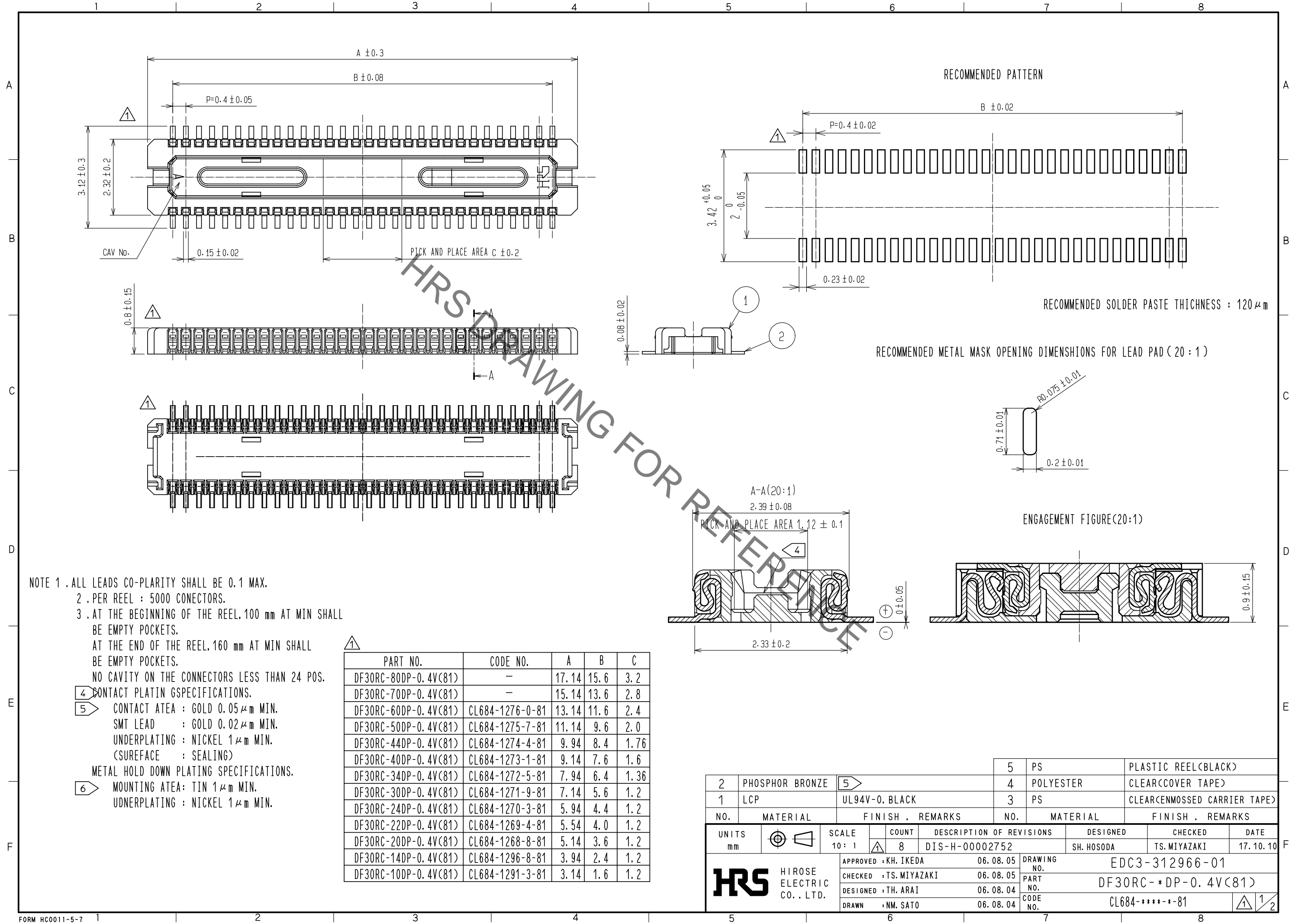


Jun.1.2020 Copyright 2020 HIROSE ELECTRIC CO., LTD. All Rights Reserved.
In case of consideration for using Automotive equipment / device which demand high reliability, kindly contact our sales window correspondents.



NOTE 1 . ALL LEADS CO-PLARITY SHALL BE 0.1 MAX.
 2 . PER REEL : 5000 CONECTORS.
 3 . AT THE BEGINNING OF THE REEL, 100 mm AT MIN SHALL BE EMPTY POCKETS.
 AT THE END OF THE REEL, 160 mm AT MIN SHALL BE EMPTY POCKETS.
 NO CAVITY ON THE CONNECTORS LESS THAN 24 POS.

- 4 CONTACT PLATIN GSPECIFICATIONS.
- 5 CONTACT ATEA : GOLD 0.05 μm MIN.
SMT LEAD : GOLD 0.02 μm MIN.
UNDERPLATING : NICKEL 1 μm MIN.
(SUREFACE : SEALING)
- 6 METAL HOLD DOWN PLATING SPECIFICATIONS.
MOUNTING ATEA: TIN 1 μm MIN.
UDNERPLATING : NICKEL 1 μm MIN.

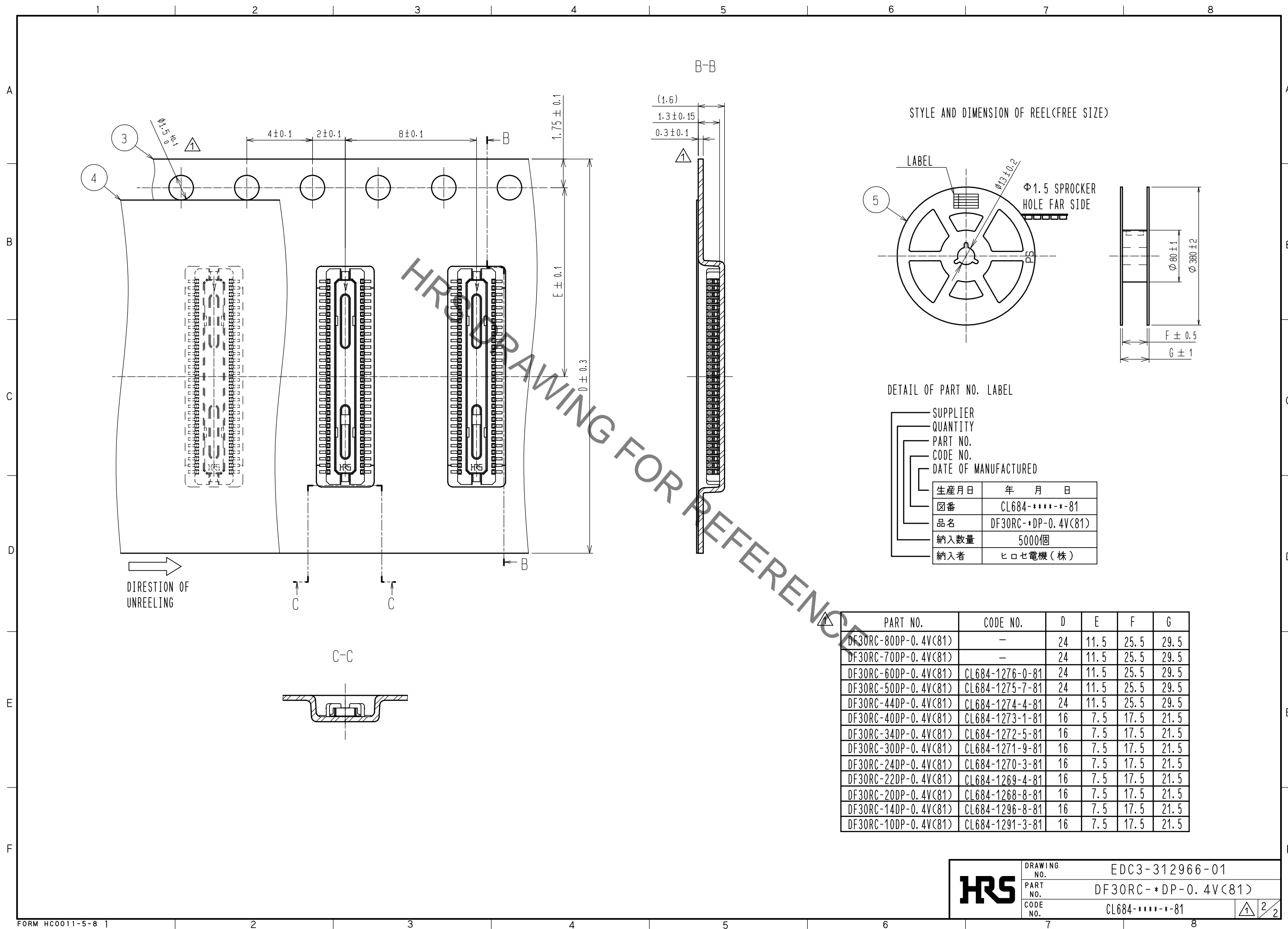
PART NO.	CODE NO.	A	B	C
DF30RC-80DP-0.4V(81)	-	17.14	15.6	3.2
DF30RC-70DP-0.4V(81)	-	15.14	13.6	2.8
DF30RC-60DP-0.4V(81)	CL684-1276-0-81	13.14	11.6	2.4
DF30RC-50DP-0.4V(81)	CL684-1275-7-81	11.14	9.6	2.0
DF30RC-44DP-0.4V(81)	CL684-1274-4-81	9.94	8.4	1.76
DF30RC-40DP-0.4V(81)	CL684-1273-1-81	9.14	7.6	1.6
DF30RC-34DP-0.4V(81)	CL684-1272-5-81	7.94	6.4	1.36
DF30RC-30DP-0.4V(81)	CL684-1271-9-81	7.14	5.6	1.2
DF30RC-24DP-0.4V(81)	CL684-1270-3-81	5.94	4.4	1.2
DF30RC-22DP-0.4V(81)	CL684-1269-4-81	5.54	4.0	1.2
DF30RC-20DP-0.4V(81)	CL684-1268-8-81	5.14	3.6	1.2
DF30RC-14DP-0.4V(81)	CL684-1296-8-81	3.94	2.4	1.2
DF30RC-10DP-0.4V(81)	CL684-1291-3-81	3.14	1.6	1.2

NO.	MATERIAL	FINISH .	REMARKS	NO.	MATERIAL	FINISH .	REMARKS
2	PHOSPHOR BRONZE	5		5	PS		PLASTIC REEL(BLACK)
1	LCP		UL94V-0. BLACK	4	POLYESTER		CLEAR(COVER TAPE)
				3	PS		CLEAR(CENMOSSED CARRIER TAPE)

UNITS	SCALE	COUNT	DESCRIPTION OF REVISIONS	DESIGNED	CHECKED	DATE
mm	10:1	8	DIS-H-00002752	SH. HOSODA	TS. MIYAZAKI	17. 10. 10

APPROVED	: KH. IKEDA	06. 08. 05	DRAWING NO.	EDC3-312966-01
CHECKED	: TS. MIYAZAKI	06. 08. 05	PART NO.	DF30RC- *DP-0.4V(81)
DESIGNED	: TH. ARAI	06. 08. 04	CODE NO.	CL684-****-81
DRAWN	: NM. SATO	06. 08. 04		

Jun.1.2020 Copyright 2020 HIROSE ELECTRIC CO., LTD. All Rights Reserved.
 In case of consideration for using Automotive equipment / device which demand high reliability, kindly contact our sales window correspondents.



HRS DRAWING NO. EDC3-312966-01
 PART NO. DF30RC-*DP*-0.4V(81)
 CODE NO. CL684-****-**-81