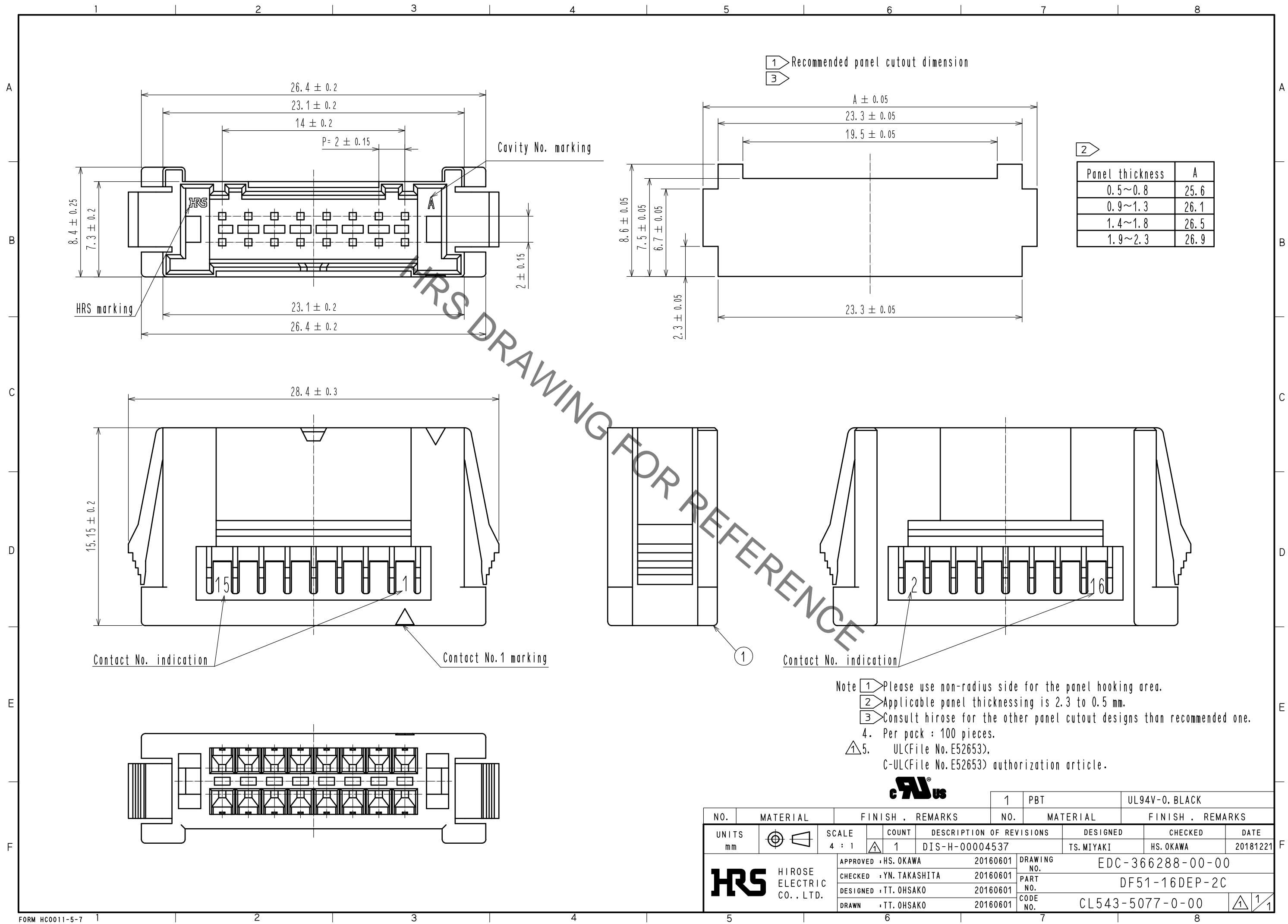


Jun.1.2020 Copyright 2020 HIROSE ELECTRIC CO., LTD. All Rights Reserved.
In case of consideration for using Automotive equipment / device which demand high reliability, kindly contact our sales window correspondents.



Note 1: Please use non-radius side for the panel hooking area.
 2: Applicable panel thicknessing is 2.3 to 0.5 mm.
 3: Consult Hirose for the other panel cutout designs than recommended one.
 4. Per pack : 100 pieces.
 5. UL(File No. E52653),
 C-UL(File No. E52653) authorization article.



NO.	MATERIAL	FINISH . REMARKS	NO.	MATERIAL	FINISH . REMARKS		
			1	PBT	UL94V-0. BLACK		
UNITS		SCALE	COUNT	DESCRIPTION OF REVISIONS	DESIGNED	CHECKED	DATE
mm		4 : 1	1	DIS-H-00004537	TS.MIYAKI	HS.OKAWA	20181221
HIROSE ELECTRIC CO., LTD.		APPROVED : HS. OKAWA	20160601	DRAWING NO.	EDC-366288-00-00		
		CHECKED : YN. TAKASHITA	20160601	PART NO.	DF51-16DEP-2C		
		DESIGNED : TT. OHSAKO	20160601	CODE NO.	CL543-5077-0-00		
		DRAWN : TT. OHSAKO	20160601				