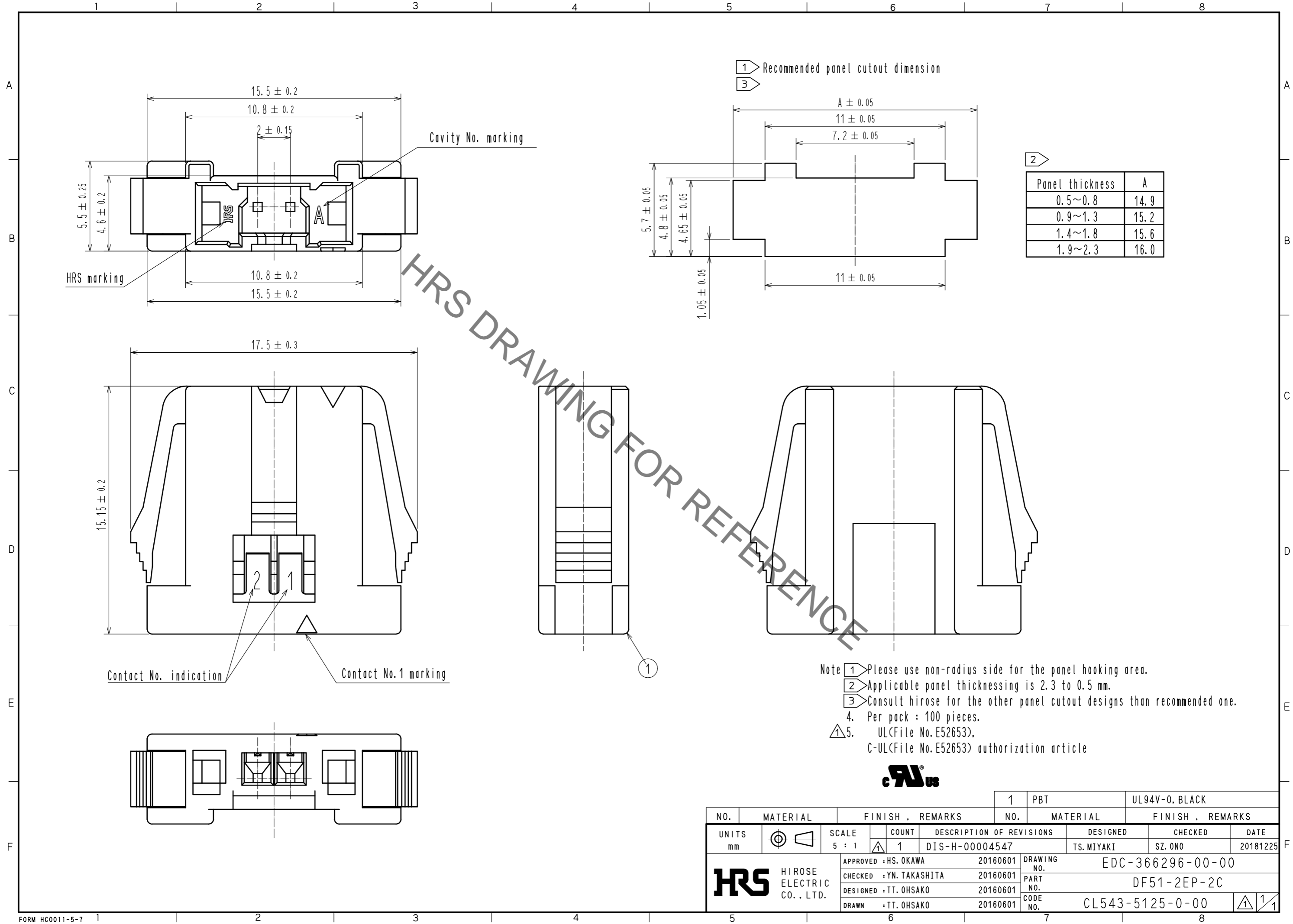


May.1.2020 Copyright 2020 HIROSE ELECTRIC CO., LTD. All Rights Reserved.  
In case of consideration for using Automotive equipment / device which demand high reliability, kindly contact our sales window correspondents.



Panel thickness	A
0.5~0.8	14.9
0.9~1.3	15.2
1.4~1.8	15.6
1.9~2.3	16.0

- Note
- 1 Please use non-radius side for the panel hooking area.
  - 2 Applicable panel thicknessing is 2.3 to 0.5 mm.
  - 3 Consult Hirose for the other panel cutout designs than recommended one.
  - 4. Per pack : 100 pieces.
  - 5. UL(File No.E52653),  
C-UL(File No.E52653) authorization article



NO.	MATERIAL	FINISH . REMARKS	NO.	MATERIAL	FINISH . REMARKS		
			1	PBT	UL94V-0. BLACK		
UNITS	mm	SCALE	COUNT	DESCRIPTION OF REVISIONS	DESIGNED	CHECKED	DATE
		5 : 1	1	DIS-H-00004547	TS.MIYAKI	SZ.ONO	20181225
APPROVED : HS. OKAWA		20160601		DRAWING NO. EDC-366296-00-00			
CHECKED : YN. TAKASHITA		20160601		PART NO. DF51-2EP-2C			
DESIGNED : TT. OHSAKO		20160601		CODE NO. CL543-5125-0-00			
DRAWN : TT. OHSAKO		20160601		1/1			