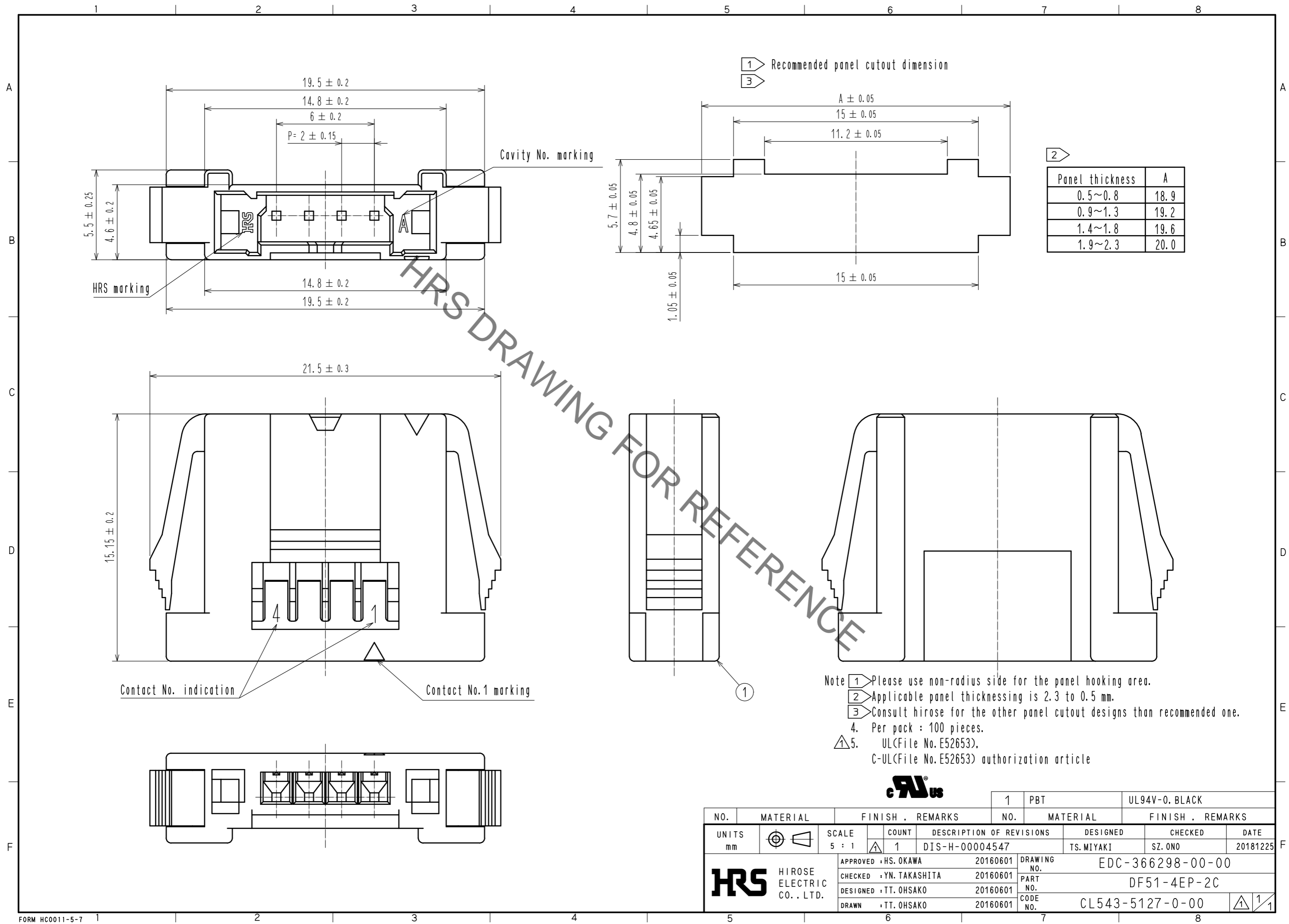


Jun.1.2020 Copyright 2020 HIROSE ELECTRIC CO., LTD. All Rights Reserved.
 In case of consideration for using Automotive equipment / device which demand high reliability, kindly contact our sales window correspondents.



- Note
- 1 Please use non-radius side for the panel hooking area.
 - 2 Applicable panel thicknessing is 2.3 to 0.5 mm.
 - 3 Consult Hirose for the other panel cutout designs than recommended one.
 - 4 Per pack : 100 pieces.
 - 5 UL(File No. E52653),
C-UL(File No. E52653) authorization article



| | | | | | | | | | | | | | |
|-------------------------|--|----------------|--|------------------|--|--|--|-----------------------|--|-------------------|--|------------------|--|
| NO. | | MATERIAL | | FINISH . REMARKS | | NO. | | MATERIAL | | FINISH . REMARKS | | | |
| UNITS mm | | SCALE 5 : 1 | | COUNT 1 | | DESCRIPTION OF REVISIONS DIS-H-00004547 | | DESIGNED TS.MIYAKI | | CHECKED SZ.ONO | | DATE 20181225 | |
| APPROVED : HS. OKAWA | | 20160601 | | DRAWING NO. | | EDC-366298-00-00 | | | | | | | |
| CHECKED : YN. TAKASHITA | | 20160601 | | PART NO. | | DF51-4EP-2C | | | | | | | |
| DESIGNED : TT. OHSAKO | | 20160601 | | CODE NO. | | CL543-5127-0-00 | | | | | | | |
| DRAWN : TT. OHSAKO | | 20160601 | | | | | | | | | | | |