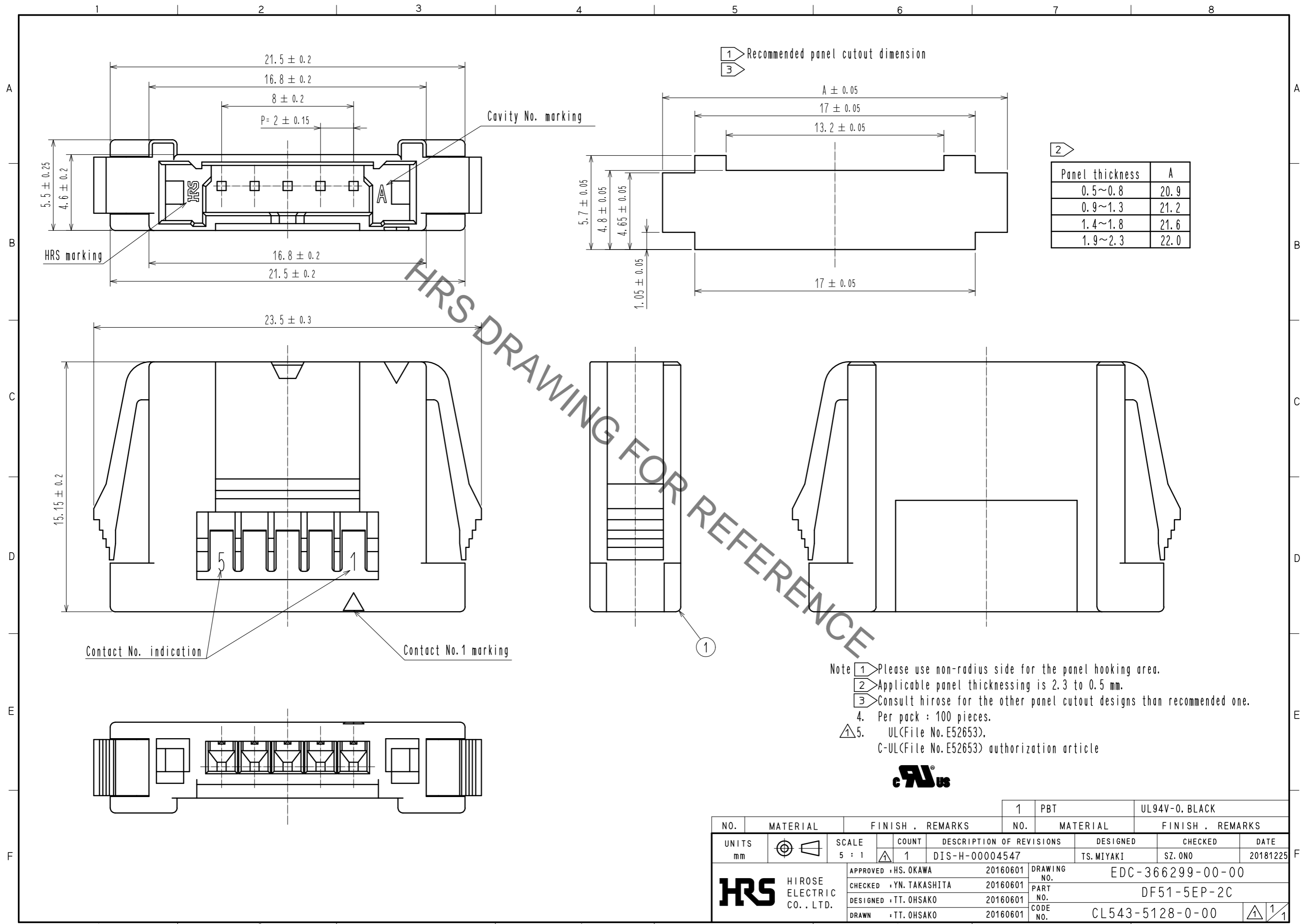


Jun.1.2020 Copyright 2020 HIROSE ELECTRIC CO., LTD. All Rights Reserved.
In case of consideration for using Automotive equipment / device which demand high reliability, kindly contact our sales window correspondents.



1 Recommended panel cutout dimension
3

2

Panel thickness	A
0.5~0.8	20.9
0.9~1.3	21.2
1.4~1.8	21.6
1.9~2.3	22.0

Note 1 Please use non-radius side for the panel hooking area.
2 Applicable panel thicknessing is 2.3 to 0.5 mm.
3 Consult hirose for the other panel cutout designs than recommended one.
4. Per pack : 100 pieces.
5. UL(File No.E52653).
C-UL(File No.E52653) authorization article



NO.	MATERIAL	FINISH . REMARKS	NO.	MATERIAL	FINISH . REMARKS
1	PBT		1	PBT	UL94V-0. BLACK
UNITS mm		SCALE 5 : 1	COUNT 1	DESCRIPTION OF REVISIONS DIS-H-00004547	DESIGNED TS.MIYAKI
APPROVED : HS. OKAWA 20160601			DRAWING NO. EDC-366299-00-00		
CHECKED : YN. TAKASHITA 20160601			PART NO. DF51-5EP-2C		
DESIGNED : TT. OHSAKO 20160601			CODE NO. CL543-5128-0-00		
DRAWN : TT. OHSAKO 20160601			1/1		