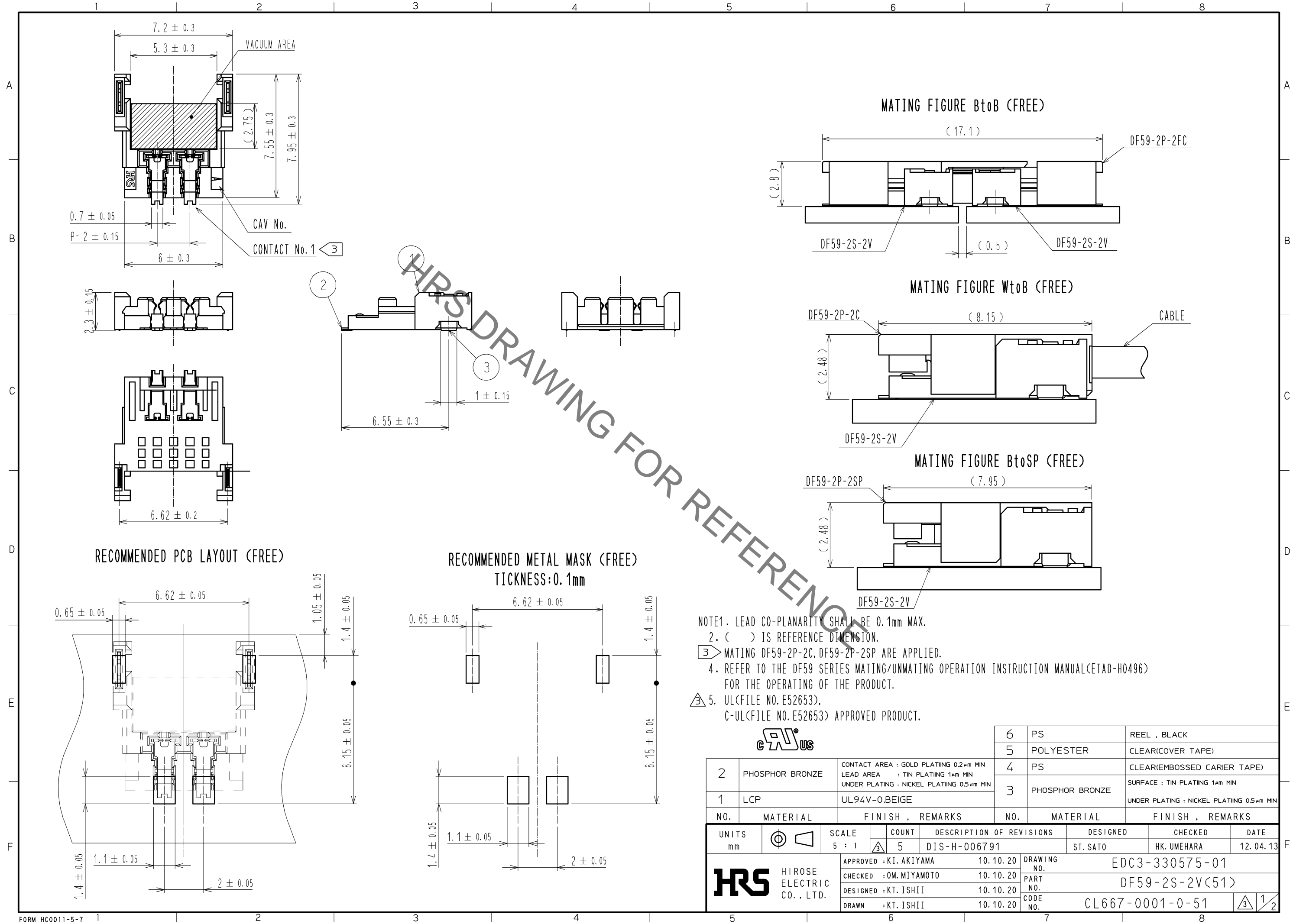


Jun.1.2020 Copyright 2020 HIROSE ELECTRIC CO., LTD. All Rights Reserved.  
In case of consideration for using Automotive equipment / device which demand high reliability, kindly contact our sales window correspondents.

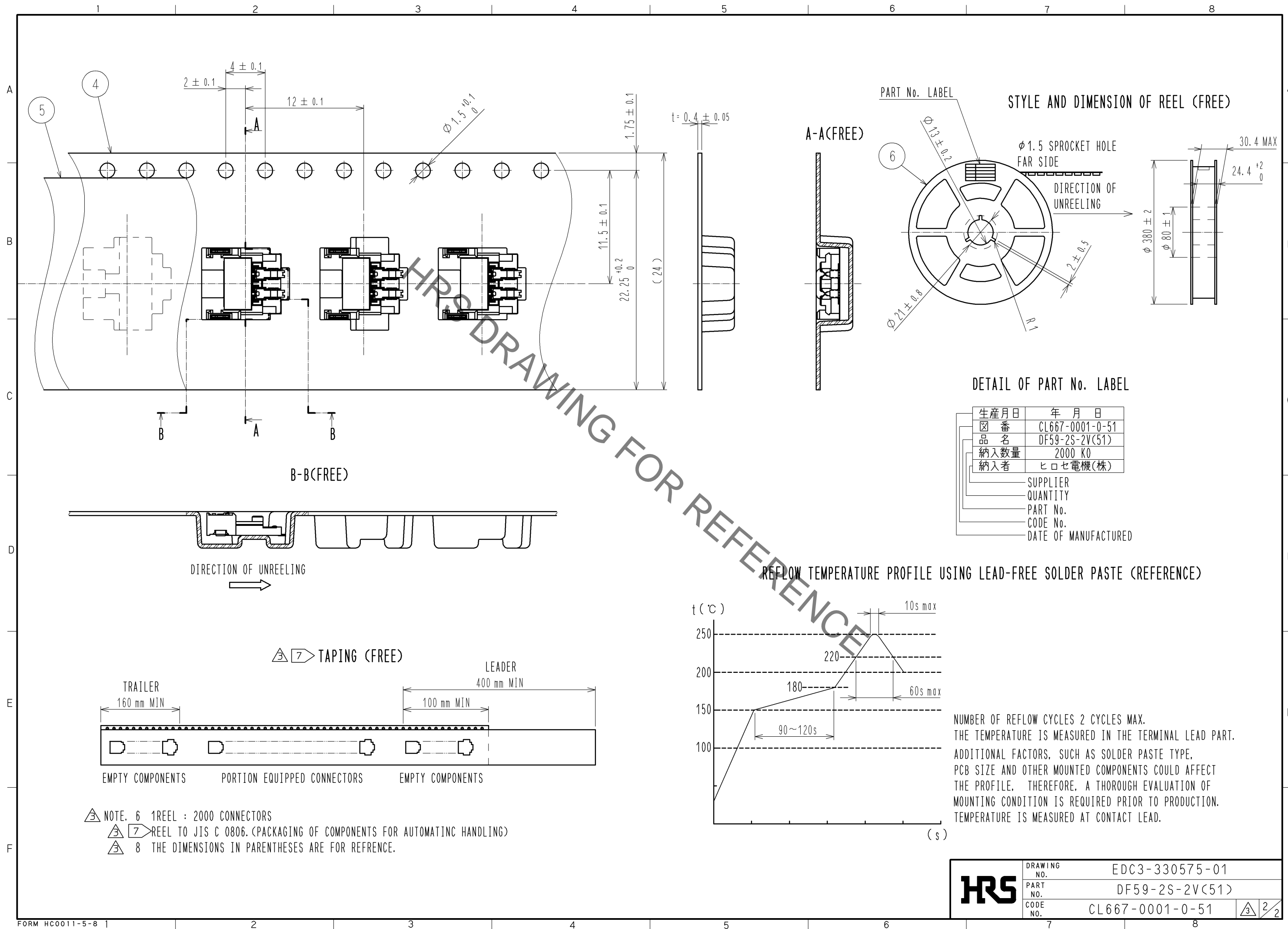


- NOTE1. LEAD CO-PLANARITY SHALL BE 0.1mm MAX.  
 2. ( ) IS REFERENCE DIMENSION.  
 3. MATING DF59-2P-2C, DF59-2P-2SP ARE APPLIED.  
 4. REFER TO THE DF59 SERIES MATING/UNMATING OPERATION INSTRUCTION MANUAL(ETAD-H0496) FOR THE OPERATING OF THE PRODUCT.  
 5. UL(FILE NO. E52653).  
 C-UL(FILE NO. E52653) APPROVED PRODUCT.



2	PHOSPHOR BRONZE	CONTACT AREA : GOLD PLATING 0.2µm MIN LEAD AREA : TIN PLATING 1µm MIN UNDER PLATING : NICKEL PLATING 0.5µm MIN	6	PS	REEL , BLACK
1	LCP	UL94V-0,BEIGE	5	POLYESTER	CLEAR(COVER TAPE)
			4	PS	CLEAR(EMBOSSSED CARRIER TAPE)
			3	PHOSPHOR BRONZE	SURFACE : TIN PLATING 1µm MIN UNDER PLATING : NICKEL PLATING 0.5µm MIN
NO.	MATERIAL	FINISH , REMARKS	NO.	MATERIAL	FINISH , REMARKS
UNITS mm		SCALE 5 : 1	COUNT 5	DESCRIPTION OF REVISIONS DIS-H-006791	
APPROVED : KI. AKIYAMA 10.10.20			DESIGNED ST. SATO	CHECKED HK. UMEHARA	
CHECKED : OM. MIYAMOTO 10.10.20			DATE 12.04.13		
DESIGNED : KT. ISHII 10.10.20			DRAWING NO. EDC3-330575-01		
DRAWN : KT. ISHII 10.10.20			PART NO. DF59-2S-2V(51)		
HRS HIROSE ELECTRIC CO., LTD.			CODE NO. CL667-0001-0-51		

Jun.1.2020 Copyright 2020 HIROSE ELECTRIC CO., LTD. All Rights Reserved.  
In case of consideration for using Automotive equipment / device which demand high reliability, kindly contact our sales window correspondents.

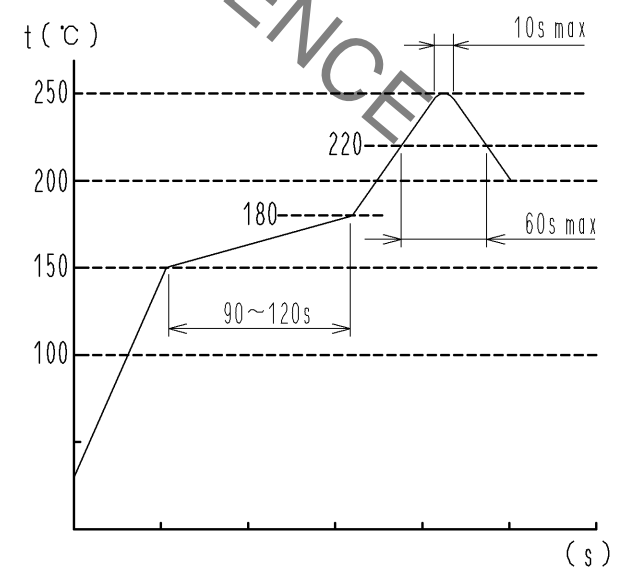


STYLE AND DIMENSION OF REEL (FREE)

DETAIL OF PART No. LABEL

生産月日	年月日
図番	CL667-0001-0-51
品名	DF59-2S-2V(51)
納入数量	2000 KO
納入者	ヒロセ電機(株)
SUPPLIER	
QUANTITY	
PART No.	
CODE No.	
DATE OF MANUFACTURED	

REFLOW TEMPERATURE PROFILE USING LEAD-FREE SOLDER PASTE (REFERENCE)



NUMBER OF REFLOW CYCLES 2 CYCLES MAX.  
THE TEMPERATURE IS MEASURED IN THE TERMINAL LEAD PART.  
ADDITIONAL FACTORS, SUCH AS SOLDER PASTE TYPE,  
PCB SIZE AND OTHER MOUNTED COMPONENTS COULD AFFECT  
THE PROFILE. THEREFORE, A THOROUGH EVALUATION OF  
MOUNTING CONDITION IS REQUIRED PRIOR TO PRODUCTION.  
TEMPERATURE IS MEASURED AT CONTACT LEAD.

- NOTE. 6 1 REEL : 2000 CONNECTORS
- 7 REEL TO JIS C 0806. (PACKAGING OF COMPONENTS FOR AUTOMATIC HANDLING)
- 8 THE DIMENSIONS IN PARENTHESES ARE FOR REFERENCE.

<b>HRS</b>	DRAWING NO.	EDC3-330575-01
	PART NO.	DF59-2S-2V(51)
	CODE NO.	CL667-0001-0-51
		2/2