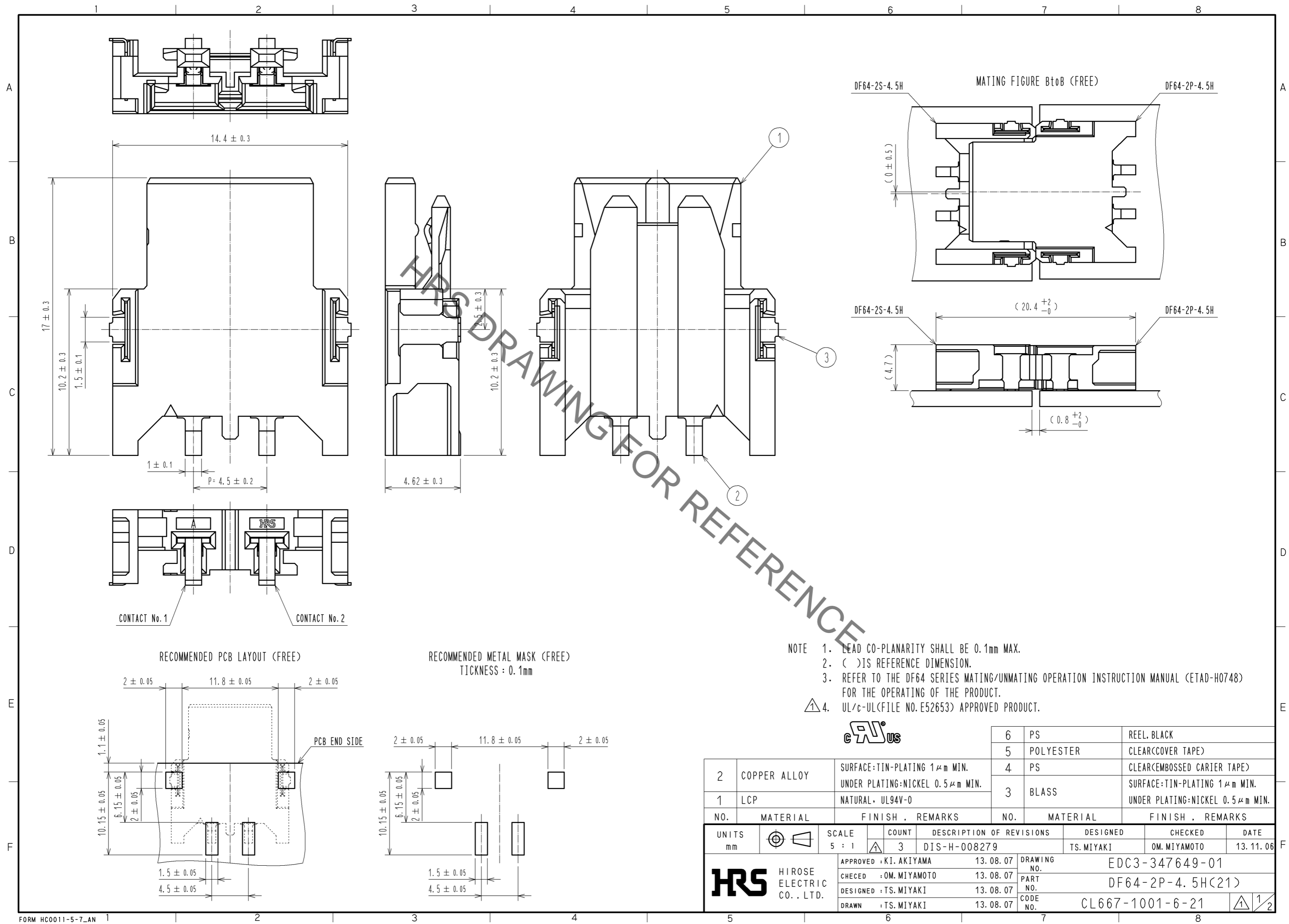


Jun.1.2020 Copyright 2020 HIROSE ELECTRIC CO., LTD. All Rights Reserved.
 In case of consideration for using Automotive equipment / device which demand high reliability, kindly contact our sales window correspondents.



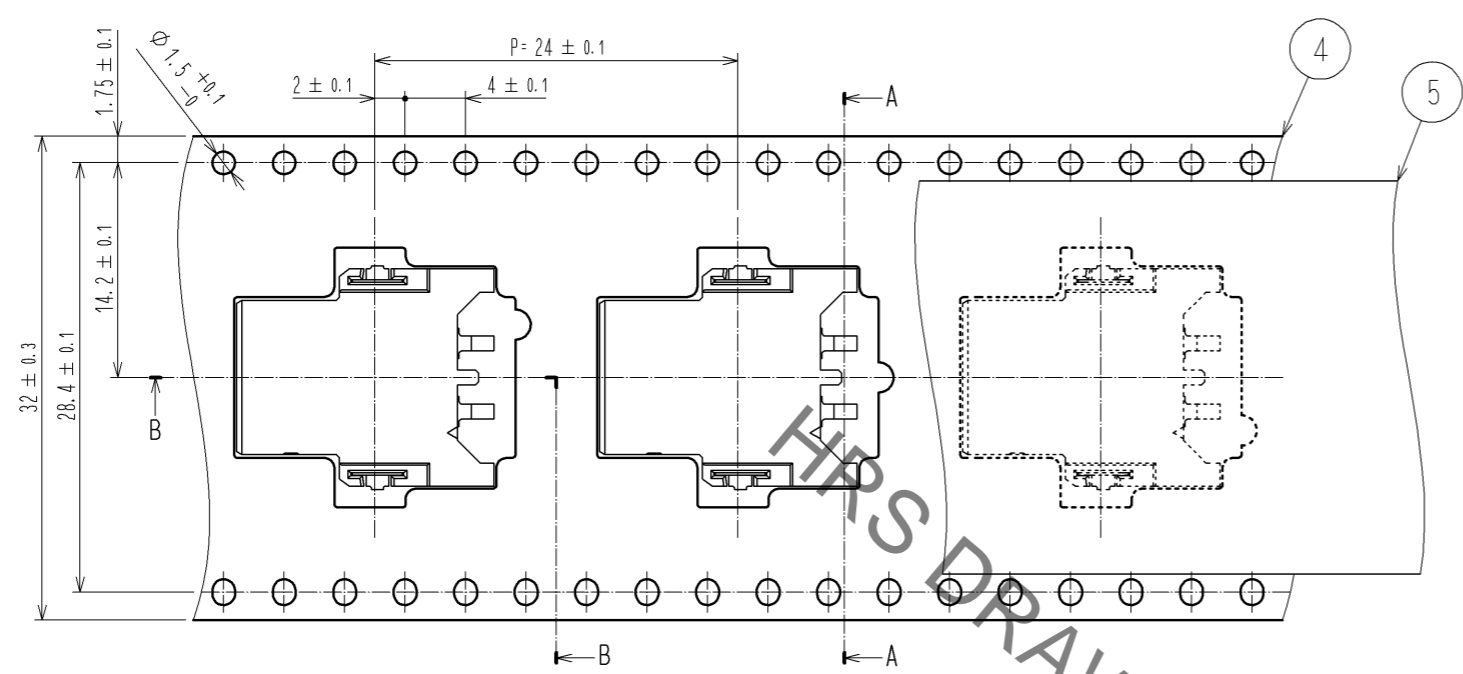
- NOTE
- LEAD CO-PLANARITY SHALL BE 0.1mm MAX.
 - () IS REFERENCE DIMENSION.
 - REFER TO THE DF64 SERIES MATING/UNMATING OPERATION INSTRUCTION MANUAL (ETAD-H0748) FOR THE OPERATING OF THE PRODUCT.
 - UL/c-UL(FILE NO. E52653) APPROVED PRODUCT.



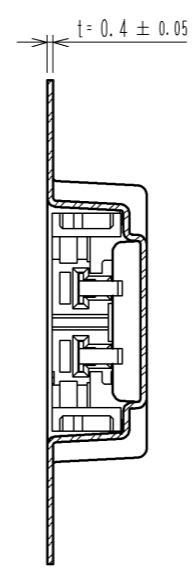
| 2 | COPPER ALLOY | SURFACE:TIN-PLATING 1μm MIN. UNDER PLATING:NICKEL 0.5μm MIN. | 6 | PS | REEL, BLACK |
|--------------------------------------|--------------|-----------------------------------------------------------------|----------------------------|--------------------------|-----------------------------------------------------------------|
| 1 | LCP | NATURAL, UL94V-0 | 5 | POLYESTER | CLEAR(COVER TAPE) |
| | | | 4 | PS | CLEAR(EMBOSSED CARRIER TAPE) |
| | | | 3 | BLASS | SURFACE:TIN-PLATING 1μm MIN. UNDER PLATING:NICKEL 0.5μm MIN. |
| NO. | MATERIAL | FINISH . REMARKS | NO. | MATERIAL | FINISH . REMARKS |
| UNITS mm | | SCALE 5 : 1 | COUNT 3 | DESCRIPTION OF REVISIONS | |
| | | | | DESIGNED TS.MIYAKI | CHECKED OM.MIYAMOTO |
| | | | | DATE 13.11.06 | |
| HRS HIROSE ELECTRIC CO., LTD. | | APPROVED : KI. AKIYAMA 13.08.07 | DRAWING NO. EDC3-347649-01 | | |
| | | CHECED : OM. MIYAMOTO 13.08.07 | PART NO. DF64-2P-4.5H(21) | | |
| | | DESIGNED : TS. MIYAKI 13.08.07 | CODE NO. CL667-1001-6-21 | | |
| | | DRAWN : TS. MIYAKI 13.08.07 | 1/2 | | |

Jun.1.2020 Copyright 2020 HIROSE ELECTRIC CO., LTD. All Rights Reserved.
 In case of consideration for using Automotive equipment / device which demand high reliability, kindly contact our sales window correspondents.

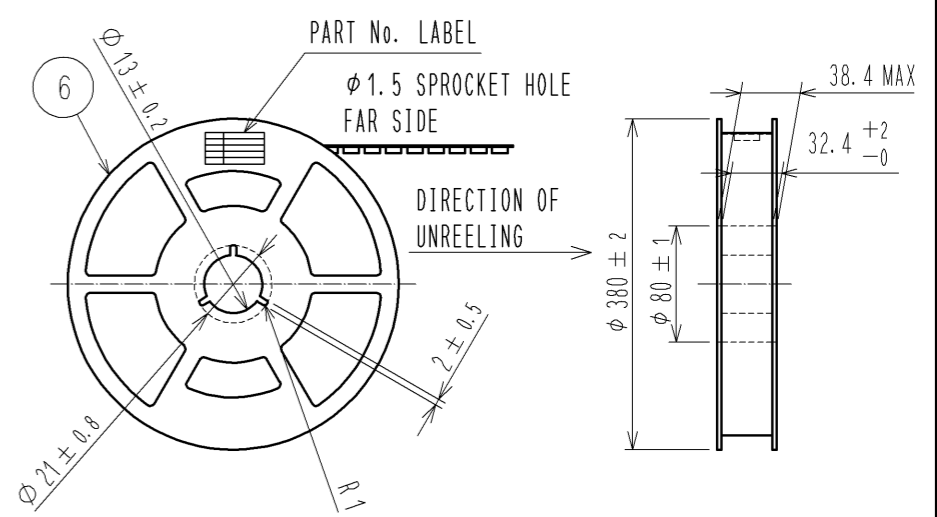
DRAWING FOR PACKING (2:1)



A-A(2:1)



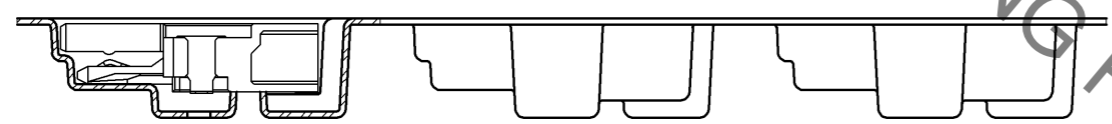
STYLE AND DIMENSION OF REEL(FREE)



DETAIL OF PART No. LABEL

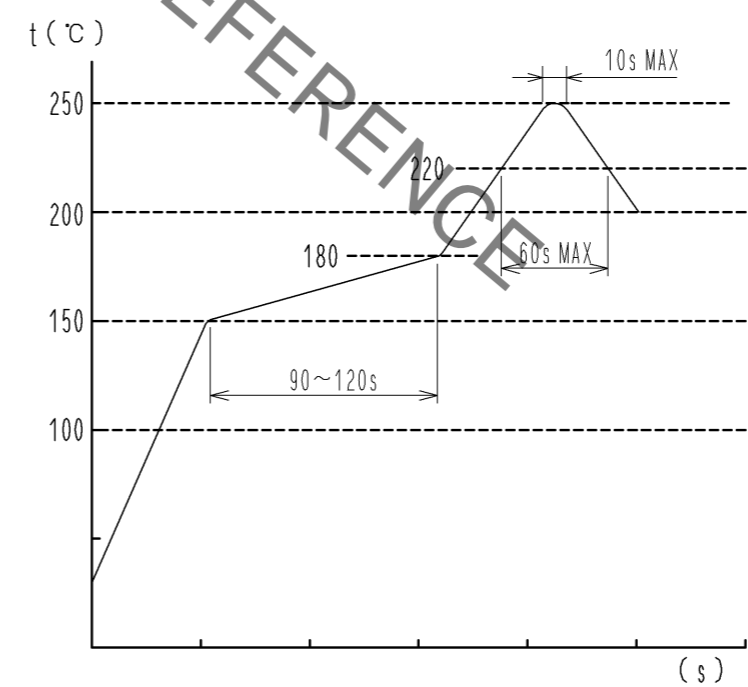
| | |
|------|------------------|
| 生産月日 | 年 月 日 |
| 図 番 | CL667-1001-6-21 |
| 品 名 | DF64-2P-4.5H(21) |
| 納入数量 | 500 K0 |
| 納入者 | ヒロセ電機(株) |

B-B(2:1)



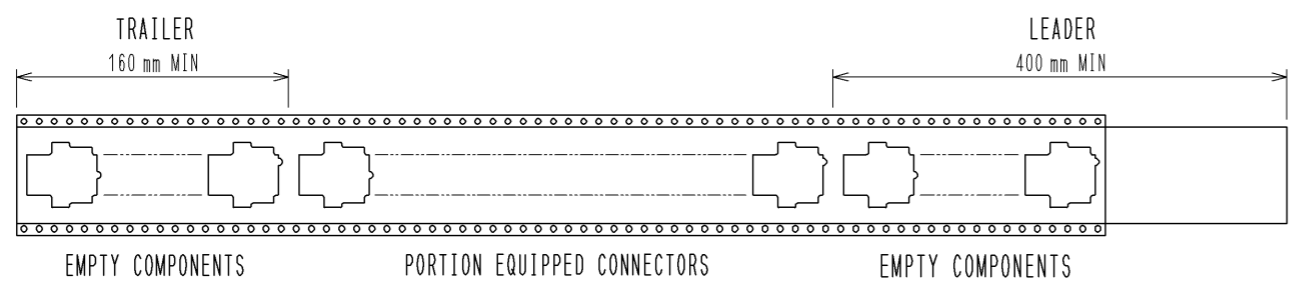
DIRECTION OF REELING →

REFLOW TEMPERATURE PROFILE USING LEAD-FREE SOLDER PASTE (REFERENCE)



NUMBER OF REFLOW CYCLES 2 CYCLES MAX
 THE TEMPERATURE IS MEASURED IN THE TERMINAL LEAD PART.
 ADDITIONAL FACTORS, SUCH AS SOLDER PASTE TYPE,
 PCB SIZE AND OTHER MOUNTED COMPONENTS COULD AFFECT
 THE PROFILE.
 THEREFORE, A THOROUGH EVALUATION OF MOUNTING CONDITION IS
 REQUIRED PRIOR TO PRODUCTION.
 TEMPERATURE IS MEASURED AT CONTACT LEAD.

TAPING(FREE)



- NOTE 5. 1REEL:500 CONNECTORS.
- 6 REEL TO JIS C 0806.(PACKAGING OF COMPONENTS FOR AUTOMATING HANDLING)
- 7. () IS REFERENCE DIMENSION.

| | | |
|------------|-------------|------------------|
| HRS | DRAWING NO. | EDC3-347649-01 |
| | PART NO. | DF64-2P-4.5H(21) |
| | CODE NO. | CL667-1001-6-21 |
| | | 2/2 |