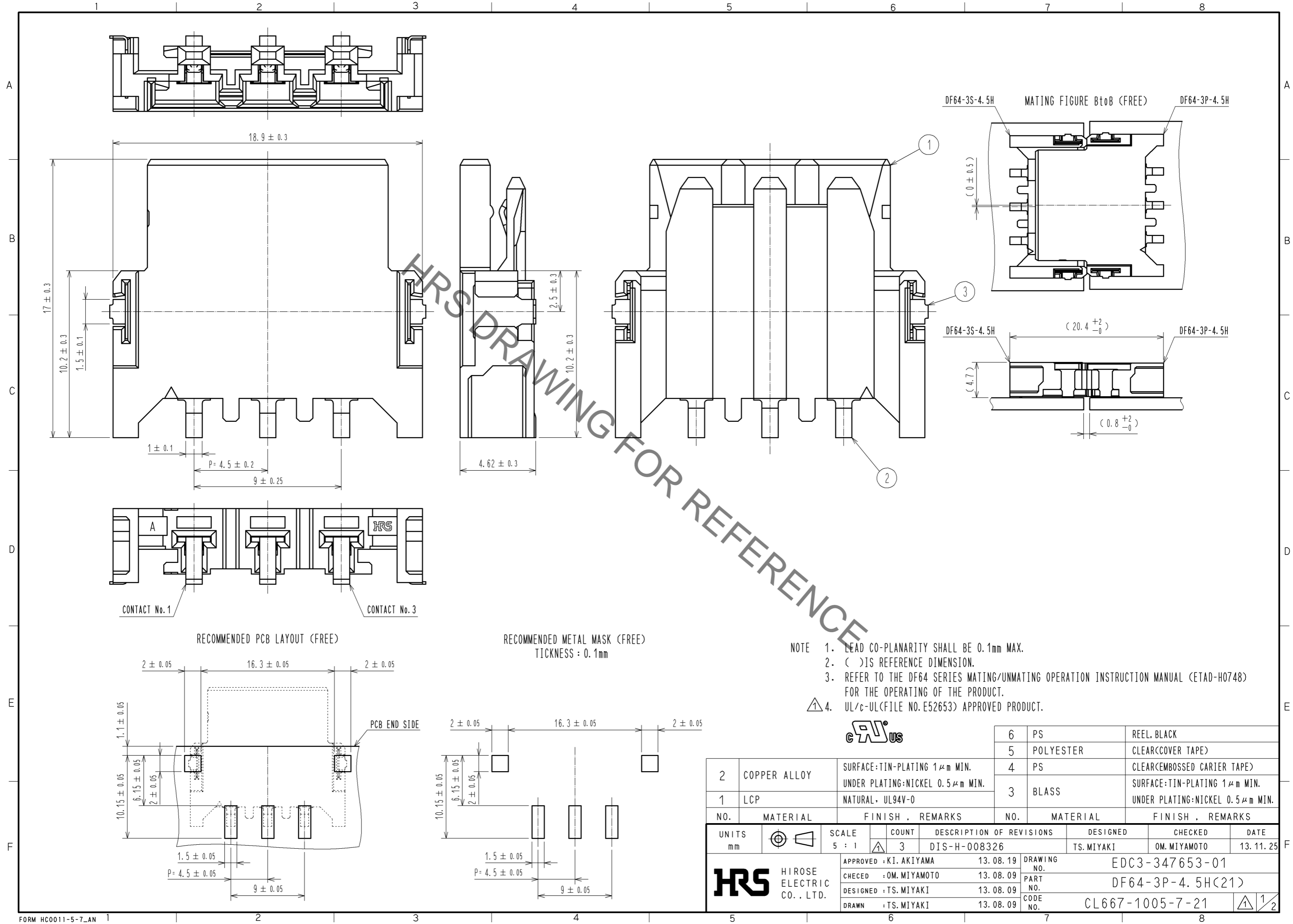


Jun.1.2020 Copyright 2020 HIROSE ELECTRIC CO., LTD. All Rights Reserved.  
 In case of consideration for using Automotive equipment / device which demand high reliability, kindly contact our sales window correspondents.



- NOTE
- LEAD CO-PLANARITY SHALL BE 0.1mm MAX.
  - ( ) IS REFERENCE DIMENSION.
  - REFER TO THE DF64 SERIES MATING/UNMATING OPERATION INSTRUCTION MANUAL (ETAD-H0748) FOR THE OPERATING OF THE PRODUCT.
  - UL/c-UL(FILE NO. E52653) APPROVED PRODUCT.



| NO. | MATERIAL     | FINISH  | REMARKS | NO. | MATERIAL  | FINISH  | REMARKS                      |
|-----|--------------|---|---------|-----|-----------|---|------------------------------|
| 2   | COPPER ALLOY | SURFACE:TIN-PLATING 1μm MIN.<br>UNDER PLATING:NICKEL 0.5μm MIN. |         | 6   | PS        |   | REEL, BLACK                  |
| 1   | LCP          | NATURAL, UL94V-0  |         | 5   | POLYESTER |   | CLEAR(COVER TAPE)            |
|     |              |   |         | 4   | PS        |   | CLEAR(EMBOSSED CARRIER TAPE) |
|     |              |   |         | 3   | BLASS     | SURFACE:TIN-PLATING 1μm MIN.<br>UNDER PLATING:NICKEL 0.5μm MIN. |                              |

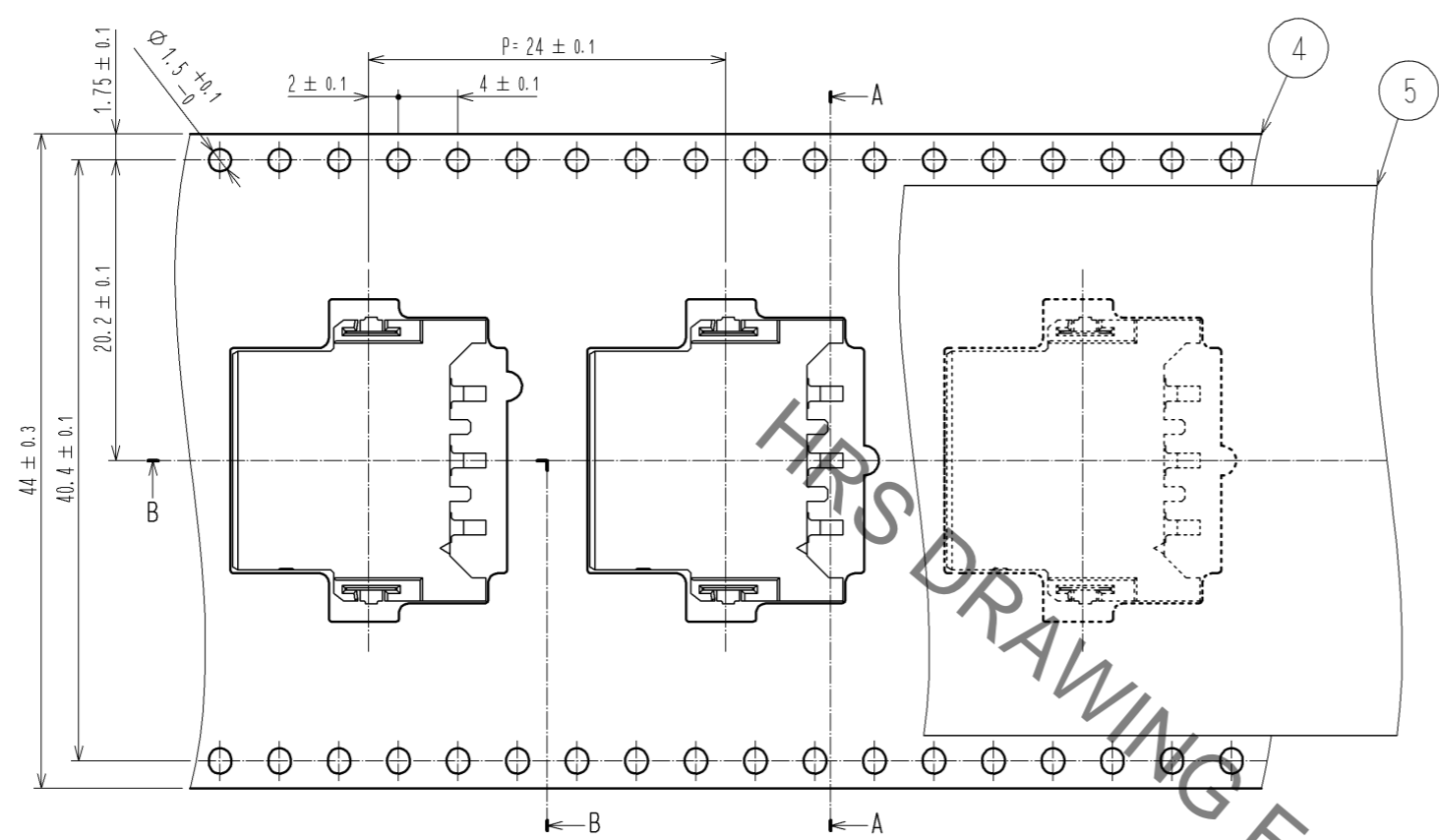
| UNITS | SCALE | COUNT | DESCRIPTION OF REVISIONS | DESIGNED  | CHECKED     | DATE     |
|-------|-------|-------|--------------------------|-----------|-------------|----------|
| mm    | 5 : 1 | 3     | DIS-H-008326             | TS.MIYAKI | OM.MIYAMOTO | 13.11.25 |

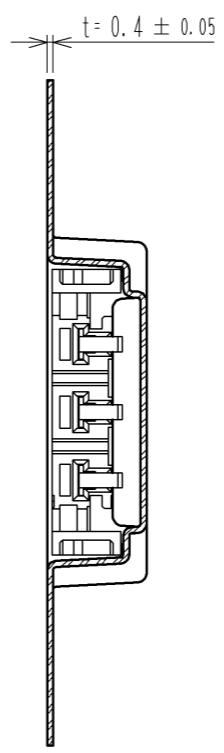
|          |                |          |             |                  |
|----------|----------------|----------|-------------|------------------|
| APPROVED | : KI. AKIYAMA  | 13.08.19 | DRAWING NO. | EDC3-347653-01   |
| CHECED   | : OM. MIYAMOTO | 13.08.09 | PART NO.    | DF64-3P-4.5H(21) |
| DESIGNED | : TS. MIYAKI   | 13.08.09 | CODE NO.    | CL667-1005-7-21  |
| DRAWN    | : TS. MIYAKI   | 13.08.09 |             |                  |

Jun.1.2020 Copyright 2020 HIROSE ELECTRIC CO., LTD. All Rights Reserved.  
 In case of consideration for using Automotive equipment / device which demand high reliability, kindly contact our sales window correspondents.

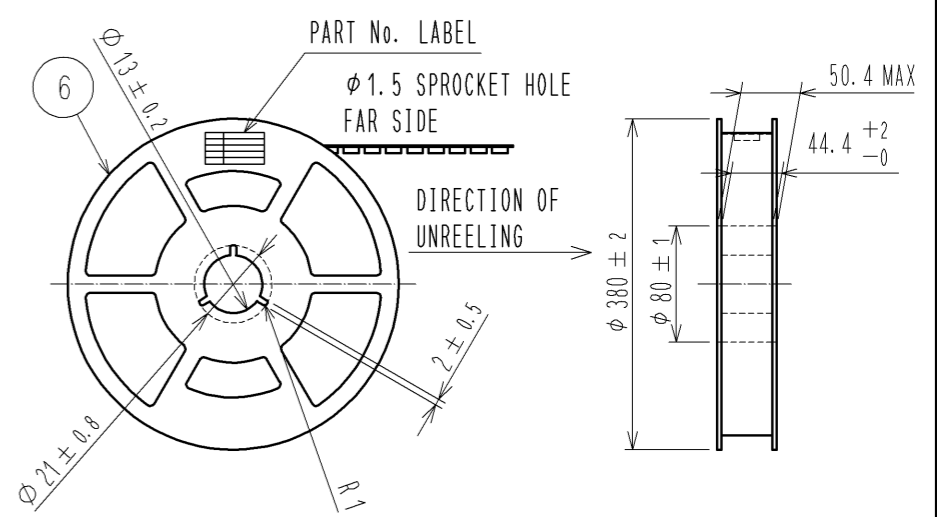
DRAWING FOR PACKING (2:1)



A-A(2:1)



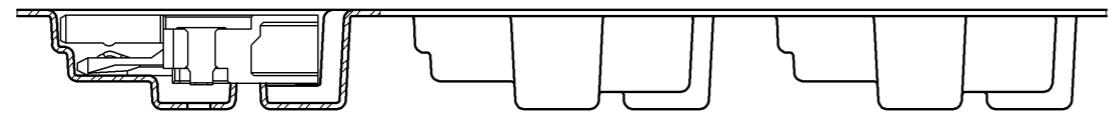
STYLE AND DIMENSION OF REEL(FREE)



DETAIL OF PART No. LABEL

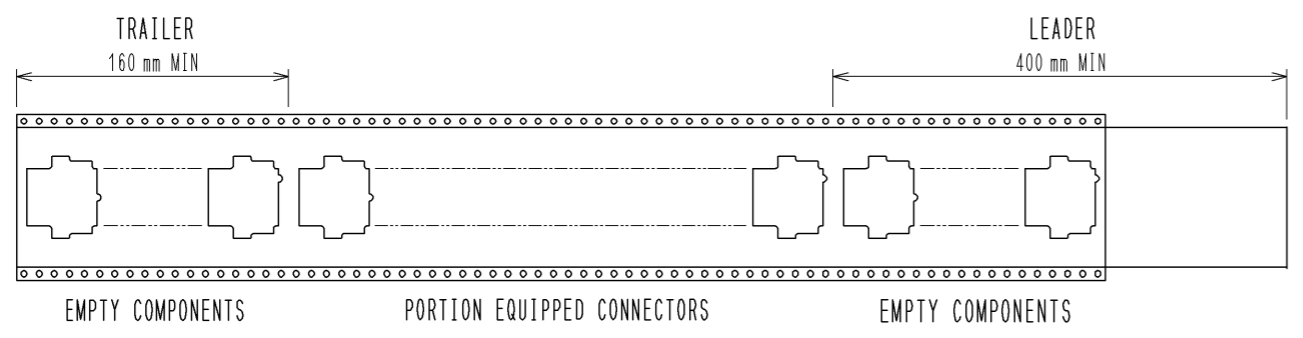
|      |                  |
|------|------------------|
| 生産月日 | 年 月 日            |
| 図 番  | CL667-1005-7-21  |
| 品 名  | DF64-3P-4.5H(21) |
| 納入数量 | 500 K0           |
| 納入者  | ヒロセ電機(株)         |

B-B(2:1)



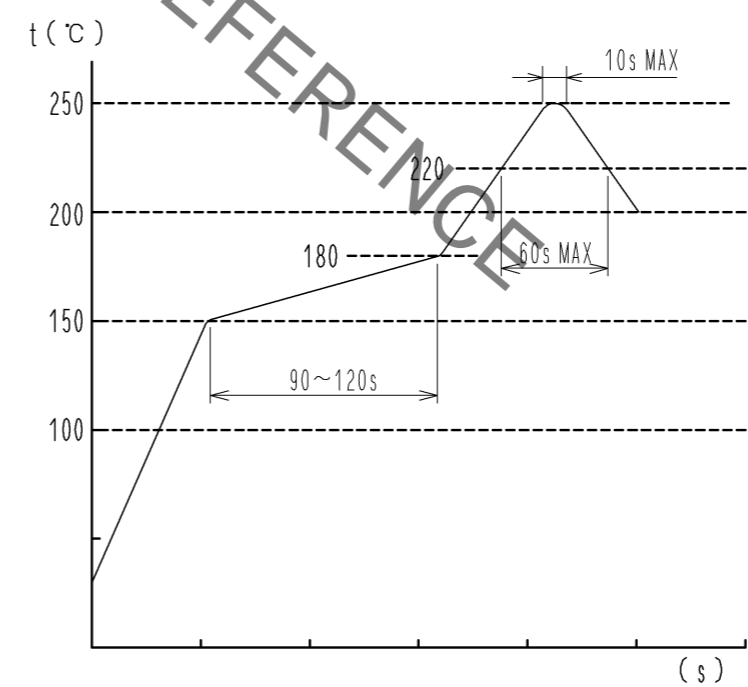
DIRECTION OF REELING →

①⑥ TAPING(FREE)



- NOTE
- ⑤ 1 REEL: 500 CONNECTORS.
  - ⑥ REEL TO JIS C 0806.(PACKAGING OF COMPONENTS FOR AUTOMATING HANDLING)
  - ⑦ ( ) IS REFERENCE DIMENSION.

REFLOW TEMPERATURE PROFILE USING LEAD-FREE SOLDER PASTE (REFERENCE)



NUMBER OF REFLOW CYCLES 2 CYCLES MAX  
 THE TEMPERATURE IS MEASURED IN THE TERMINAL LEAD PART.  
 ADDITIONAL FACTORS, SUCH AS SOLDER PASTE TYPE,  
 PCB SIZE AND OTHER MOUNTED COMPONENTS COULD AFFECT  
 THE PROFILE.  
 THEREFORE, A THOROUGH EVALUATION OF MOUNTING CONDITION IS  
 REQUIRED PRIOR TO PRODUCTION.  
 TEMPERATURE IS MEASURED AT CONTACT LEAD.

|            |             |                  |
|------------|-------------|------------------|
| <b>HRS</b> | DRAWING NO. | EDC3-347653-01   |
|            | PART NO.    | DF64-3P-4.5H(21) |
|            | CODE NO.    | CL667-1005-7-21  |
|            |             | ① 2/2            |