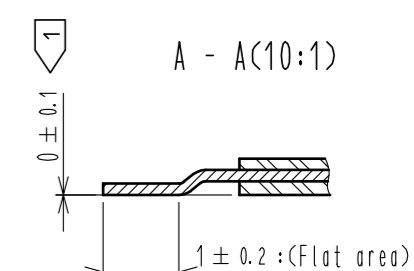
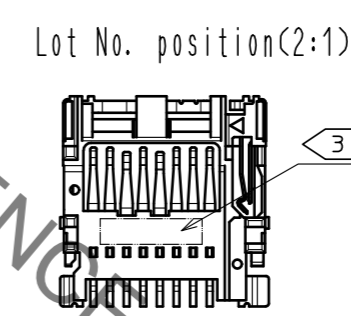
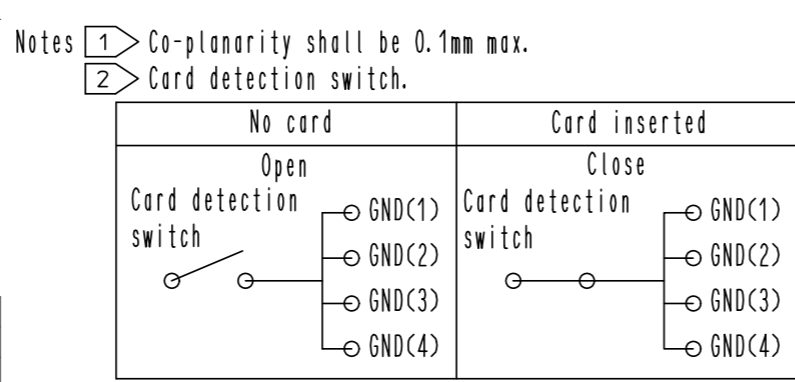
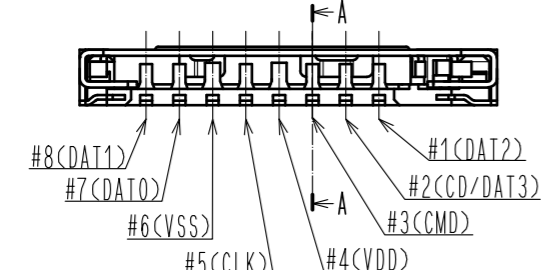
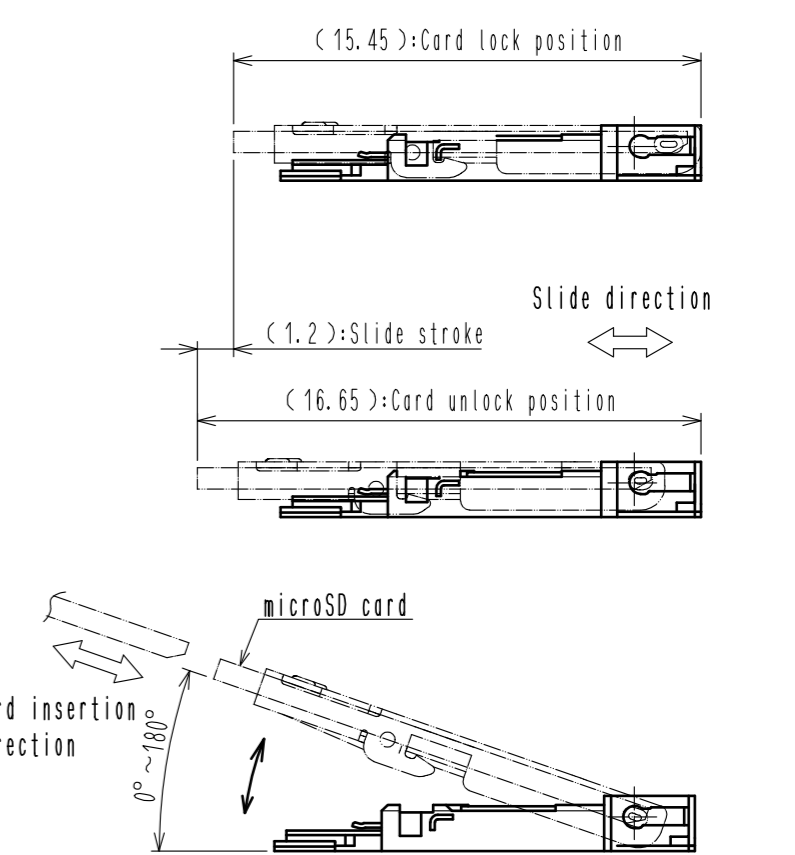
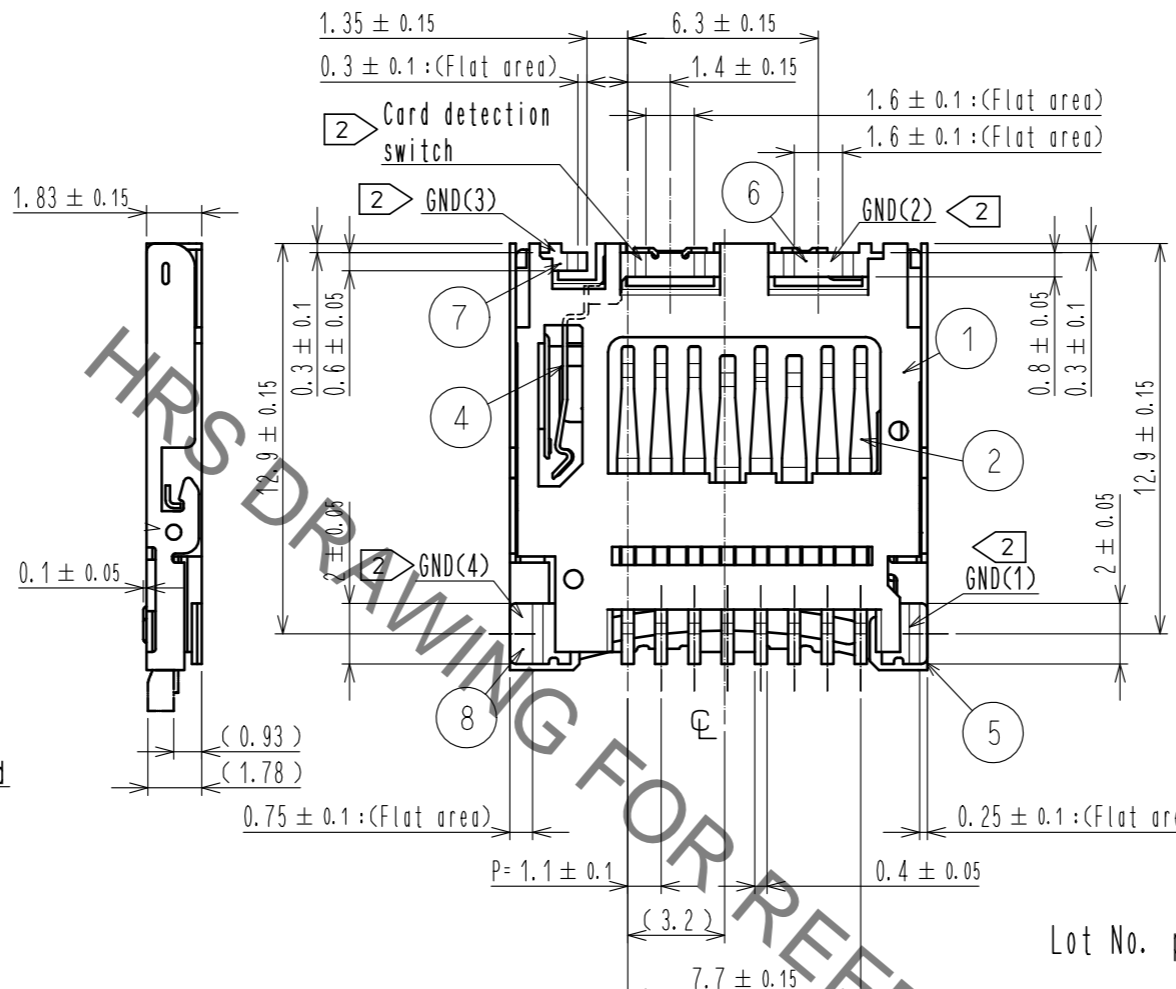
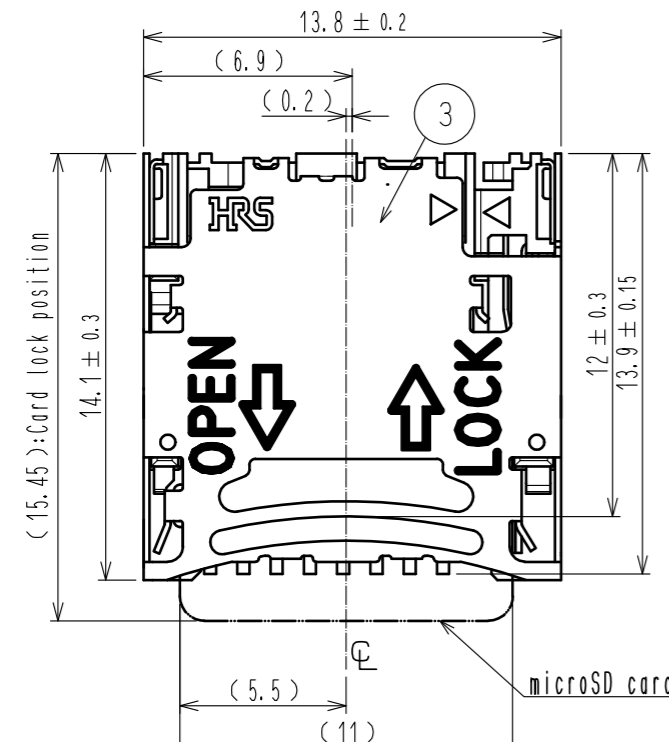
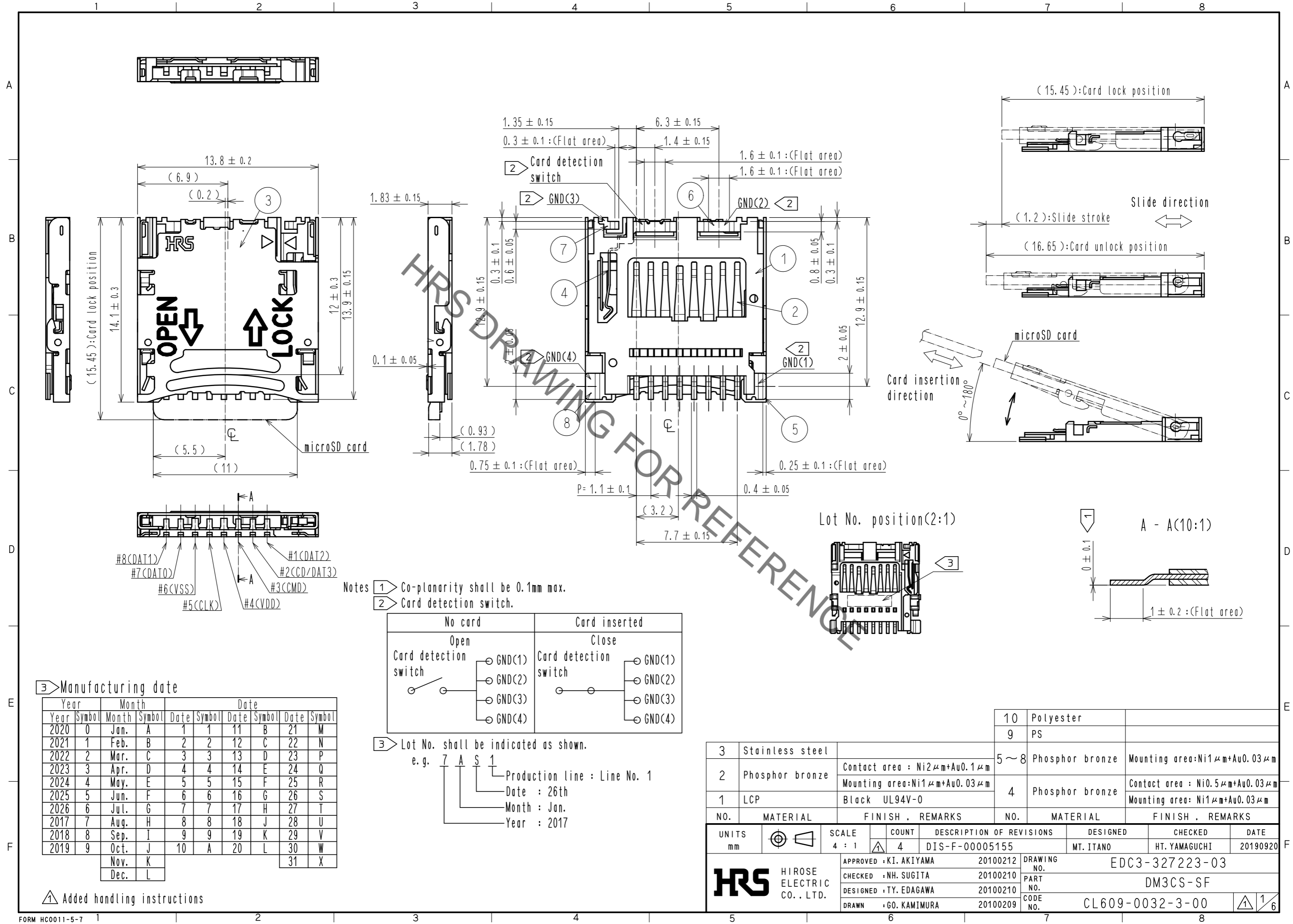
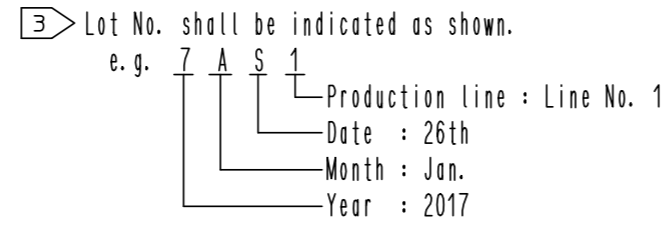


May.1.2020 Copyright 2020 HIROSE ELECTRIC CO., LTD. All Rights Reserved.
 In case of consideration for using Automotive equipment / device which demand high reliability, kindly contact our sales window correspondents.



3 Manufacturing date

Year	Month	Date							
Year	Symbol	Month	Symbol	Date	Symbol	Date	Symbol	Date	Symbol
2020	0	Jan.	A	1	1	11	B	21	M
2021	1	Feb.	B	2	2	12	C	22	N
2022	2	Mar.	C	3	3	13	D	23	P
2023	3	Apr.	D	4	4	14	E	24	Q
2024	4	May.	E	5	5	15	F	25	R
2025	5	Jun.	F	6	6	16	G	26	S
2026	6	Jul.	G	7	7	17	H	27	T
2017	7	Aug.	H	8	8	18	J	28	U
2018	8	Sep.	I	9	9	19	K	29	V
2019	9	Oct.	J	10	A	20	L	30	W
		Nov.	K						
		Dec.	L					31	X



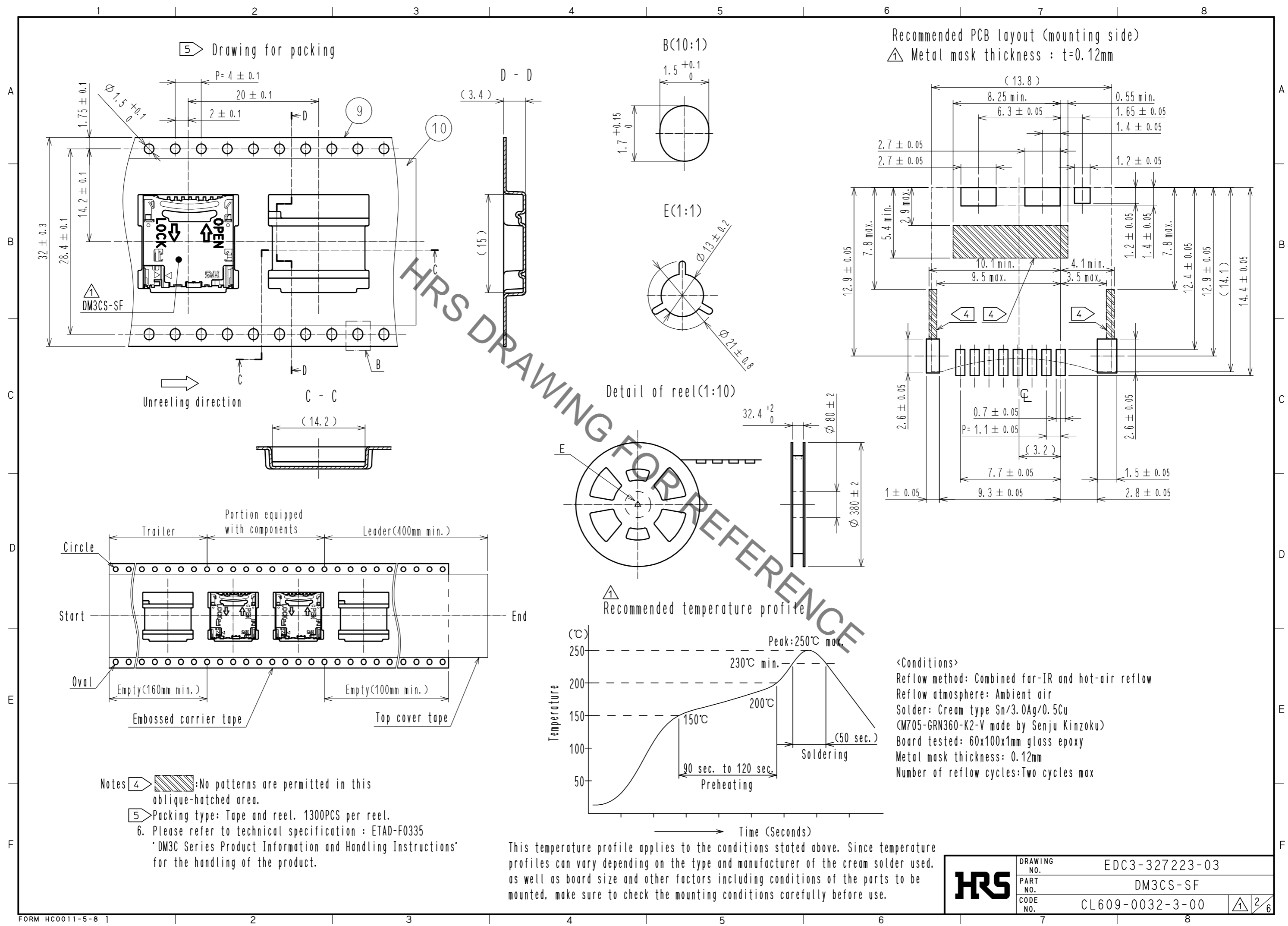
NO.	MATERIAL	FINISH . REMARKS	NO.	MATERIAL	FINISH . REMARKS
3	Stainless steel		10	Polyester	
			9	PS	
2	Phosphor bronze	Contact area : Ni2μm+Au0.1μm Mounting area: Ni1μm+Au0.03μm	5~8	Phosphor bronze	Mounting area: Ni1μm+Au0.03μm
1	LCP	Black UL94V-0	4	Phosphor bronze	Contact area : Ni0.5μm+Au0.03μm Mounting area: Ni1μm+Au0.03μm

UNITS	SCALE	COUNT	DESCRIPTION OF REVISIONS	DESIGNED	CHECKED	DATE
mm	4 : 1	4	DIS-F-00005155	MT. ITANO	HT. YAMAGUCHI	20190920

APPROVED	CHECKED	DESIGNED	DRAWN	DRAWING NO.	PART NO.	CODE NO.
• KI. AKIYAMA	• NH. SUGITA	• TY. EDAGAWA	• GO. KAMIMURA	20100212	20100210	20100210
				EDC3-327223-03		
				DM3CS-SF		
				CL609-0032-3-00		

Added handling instructions

May.1.2020 Copyright 2020 HIROSE ELECTRIC CO., LTD. All Rights Reserved.
 In case of consideration for using Automotive equipment / device which demand high reliability, kindly contact our sales window correspondents.

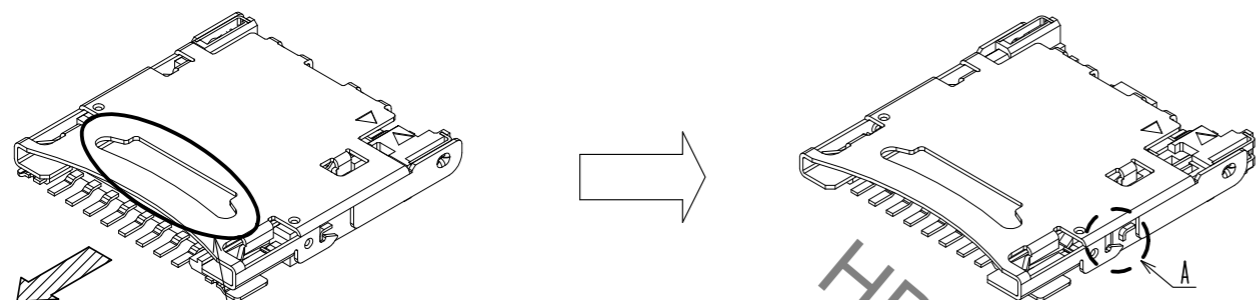


May.1.2020 Copyright 2020 HIROSE ELECTRIC CO., LTD. All Rights Reserved.
In case of consideration for using Automotive equipment / device which demand high reliability, kindly contact our sales window correspondents.

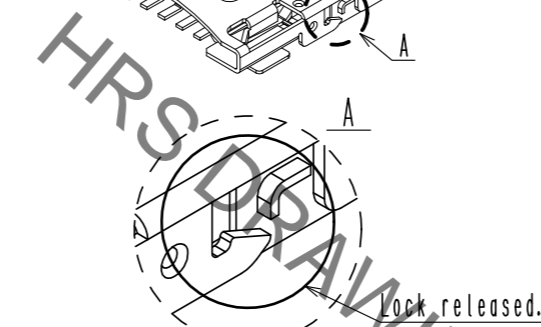
1. Operating instructions

- Inserting the card -

① Hook your fingernail in the slit in the cover and slide it to release the lock.



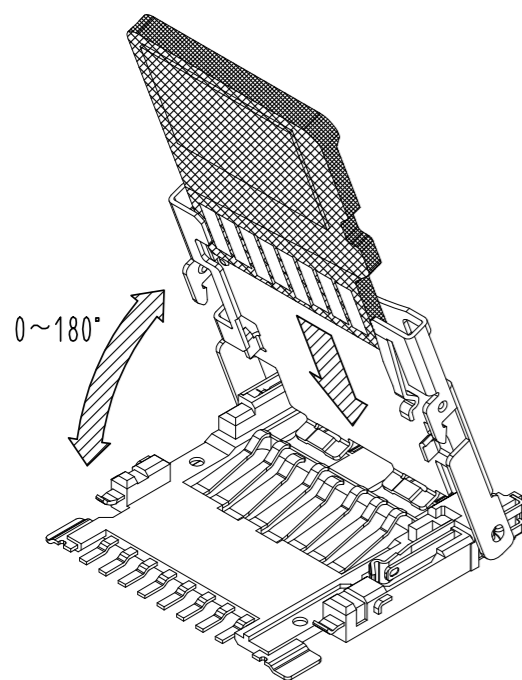
Hook your fingernail in the slit in the cover and slide it.



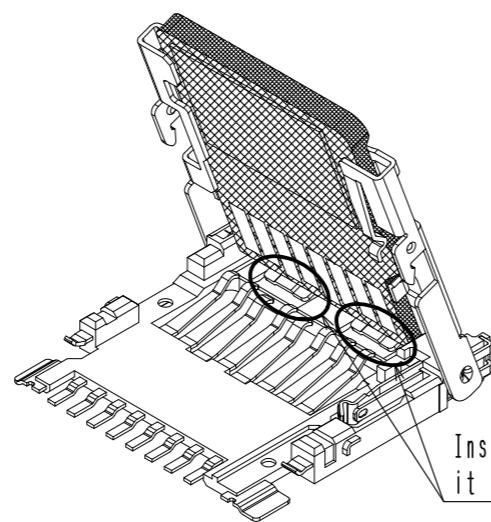
② Open the cover and insert the card.

* Make sure to insert the card in the correct direction.

Also make sure that the card is fully inserted (It should be touching the wall).

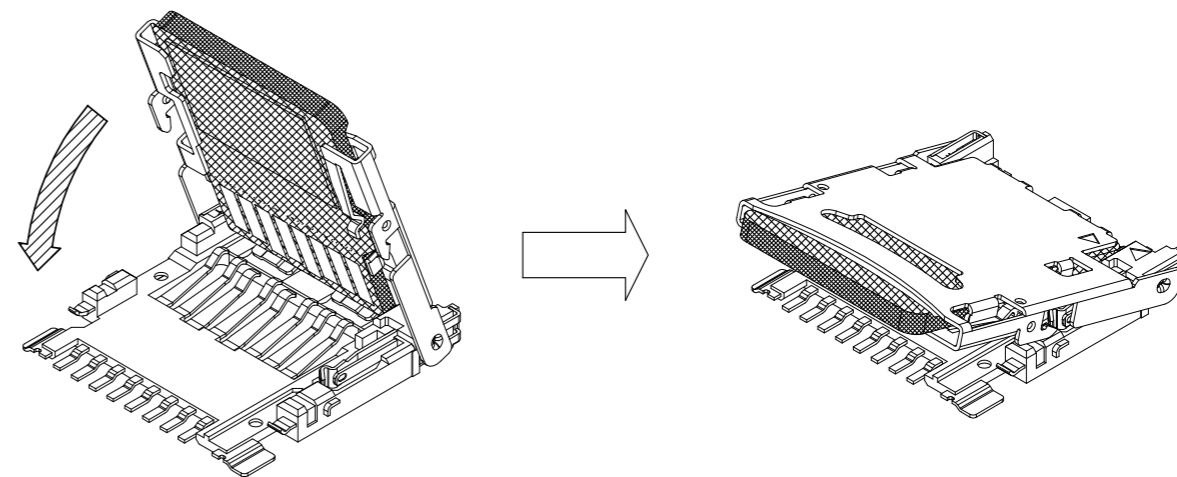


0~180°



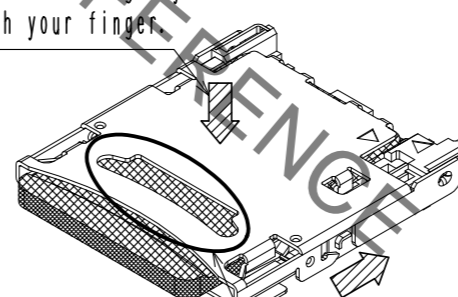
Insert the card so that it touches the wall.

③ Close the cover. (The signal contact spring will keep the cover lifted)

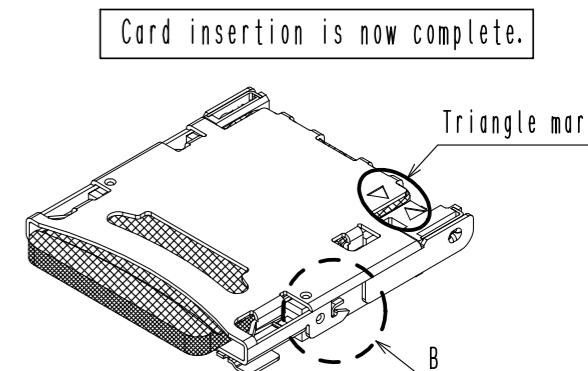


④ To lock the cover, press down lightly on the card with your finger, hook your fingernail in the slit and slide the cover so that the triangle marks on the mold and cover align with each other.

Press down lightly with your finger.

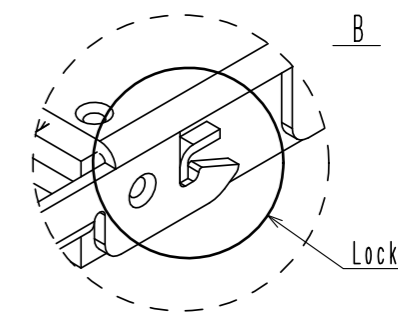


Hook your fingernail in the slit in the cover and slide it.



Card insertion is now complete.

Triangle mark



B

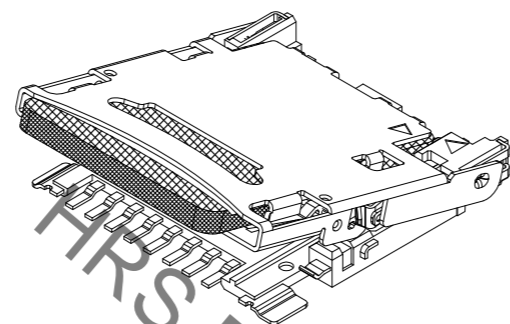
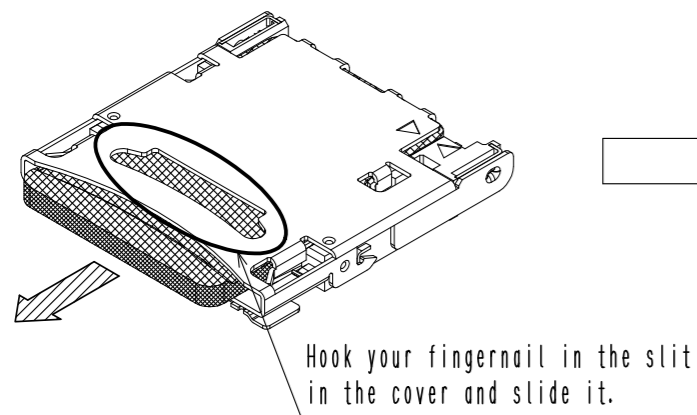
Lock

HRS	DRAWING NO.	EDC3-327223-03
	PART NO.	DM3CS-SF
	CODE NO.	CL609-0032-3-00
		3/6

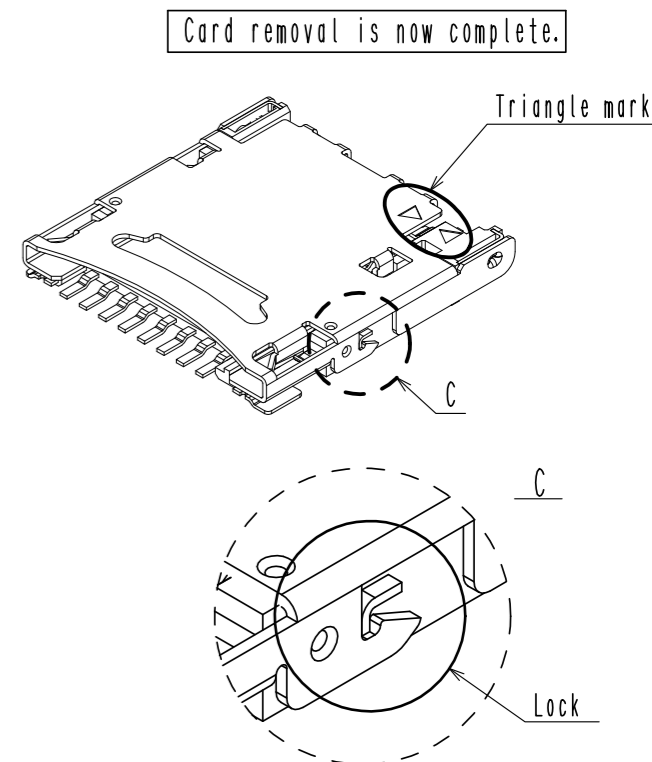
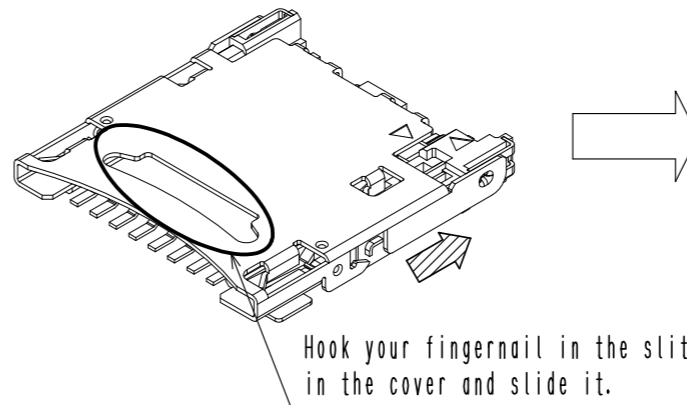
May.1.2020 Copyright 2020 HIROSE ELECTRIC CO., LTD. All Rights Reserved.
In case of consideration for using Automotive equipment / device which demand high reliability, kindly contact our sales window correspondents.

- Removing the card -

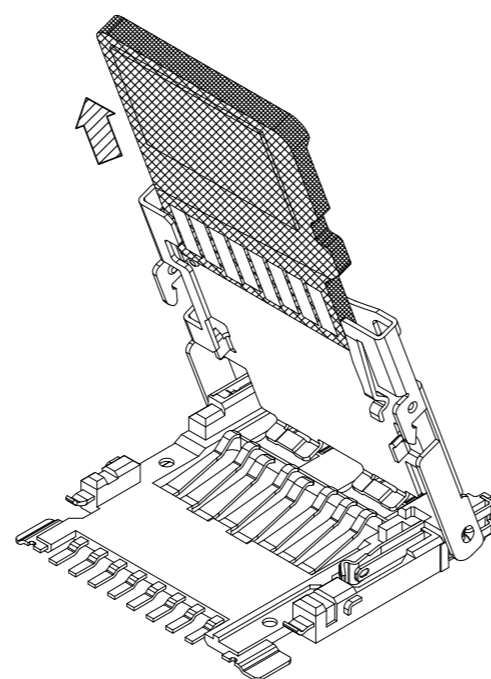
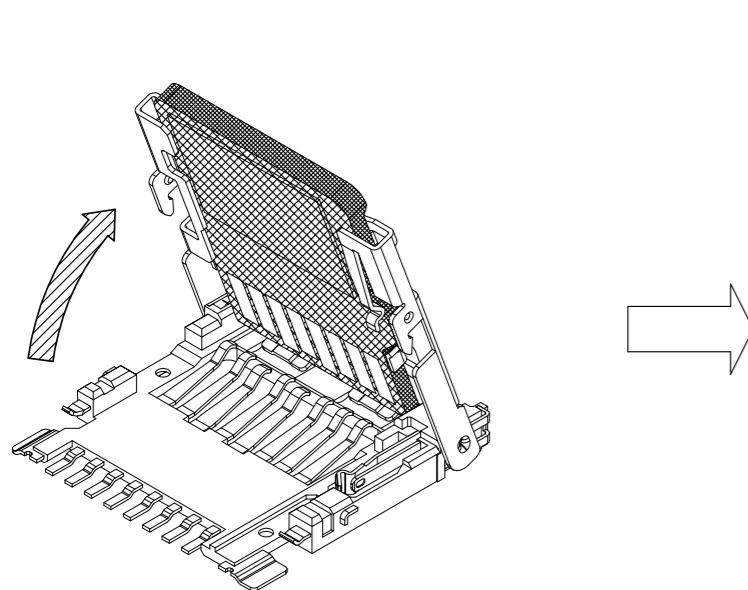
⑤ Hook your fingernail in the slit in the cover and slide it to release the lock.
(The signal contact spring will keep the cover lifted when you release the lock)



⑦ To lock the cover, close the cover, hook your fingernail in the slit, and slide the cover so that the triangle marks on the mold and cover align with each other.



⑥ Open the cover and remove the card.



* The cover will not come off during normal use. If it should come off during use, make sure to replace the entire connector.

HRS DRAWING FOR REFERENCE

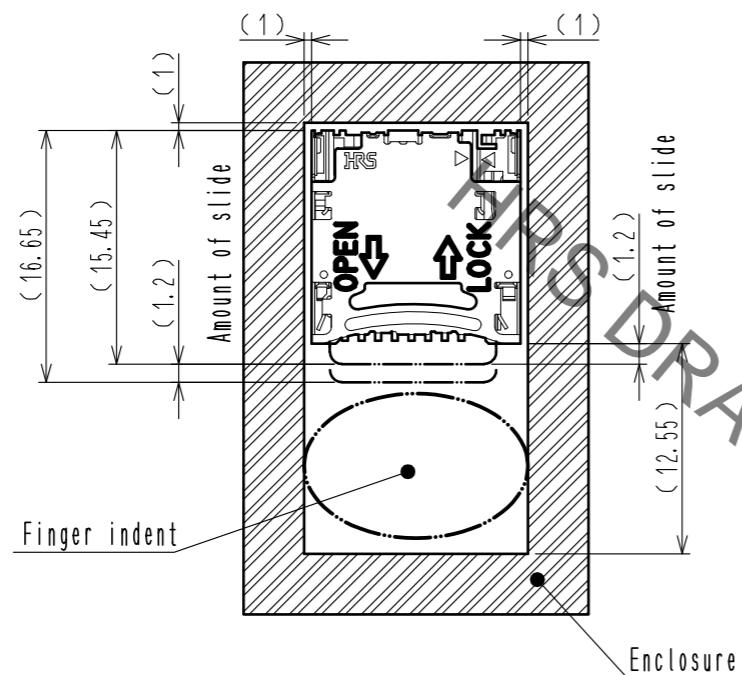
HRS	DRAWING NO.	EDC3-327223-03
	PART NO.	DM3CS-SF
	CODE NO.	CL609-0032-3-00
		4/6

May.1.2020 Copyright 2020 HIROSE ELECTRIC CO., LTD. All Rights Reserved.
In case of consideration for using Automotive equipment / device which demand high reliability, kindly contact our sales window correspondents.

2. Enclosure dimensions

◆Recommended enclosure layout

This connector is designed so that the card and cover slide by about 1.2mm when removing the card. If you plan to create a 'finger indent' to facilitate card removal, make sure to take into account the amount of slide.

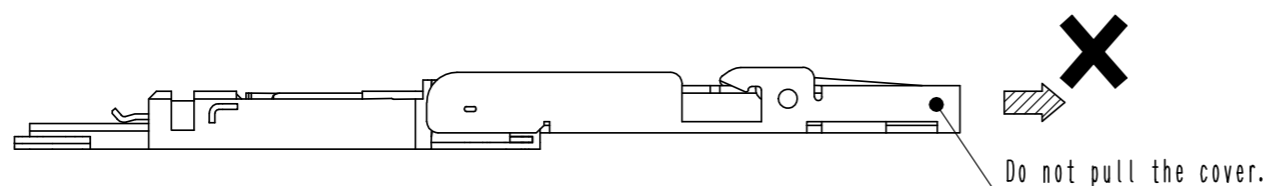


The cover opens up to 180° .

Please do not pull the cover with opening and closing, otherwise it could be come off or damaged.

Especially, pulling the cover to the direction as shown in the figure with 180° open causes the cover to be disassembled.

In order to prevent this accident, guiding by your chassis not to open to 180° is recommended.



◆Prevent incorrect card insertion

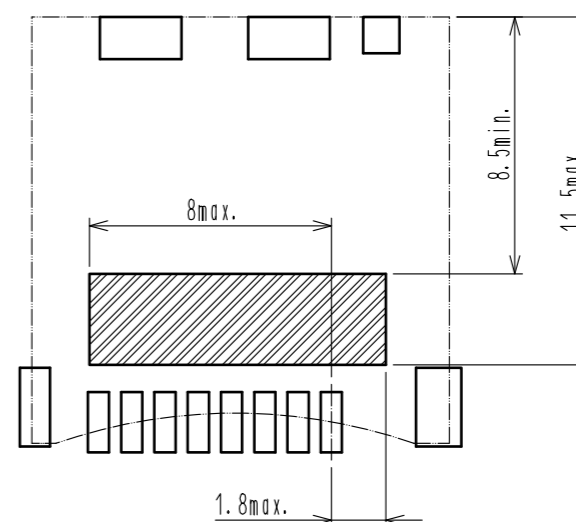
If you will be displaying markings or instructions to prevent end users from inserting the card incorrectly, please pay extra attention to the text description and the direction of the marking used to indicate the correct direction.

3. Mounting to FPC

◆This product is based on a thin design concept. If you are mounting the product onto an FPC, the recommended thickness of the reinforcement plate to use is 0.3mm or thicker.

4. Area recommended for the application of surface mounting adhesive

Make sure to apply adhesives in the applicable areas shown in the drawing below. Avoid using adhesives in other areas as this can lead to functional problems. Do not apply excessive amounts of adhesive as this can cause the product to 'float' which may in turn cause solder failure. Make sure to use only the smallest amount of adhesive necessary.



Recommended adhesive : SOMAKOTE IR-010H-3
(made by Somar Co., Ltd.)

HRS	DRAWING NO.	EDC3-327223-03
	PART NO.	DM3CS-SF
	CODE NO.	CL609-0032-3-00

