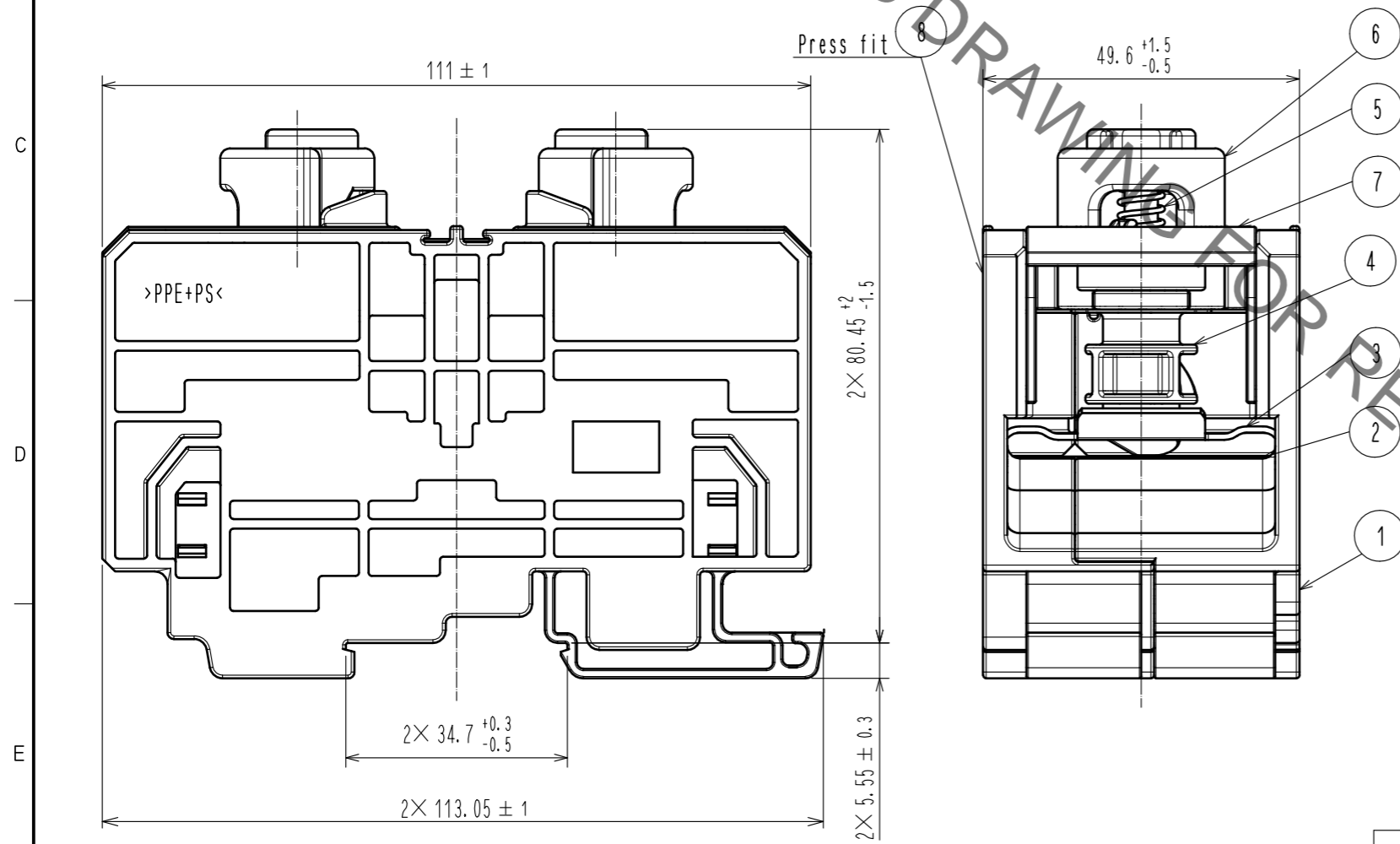
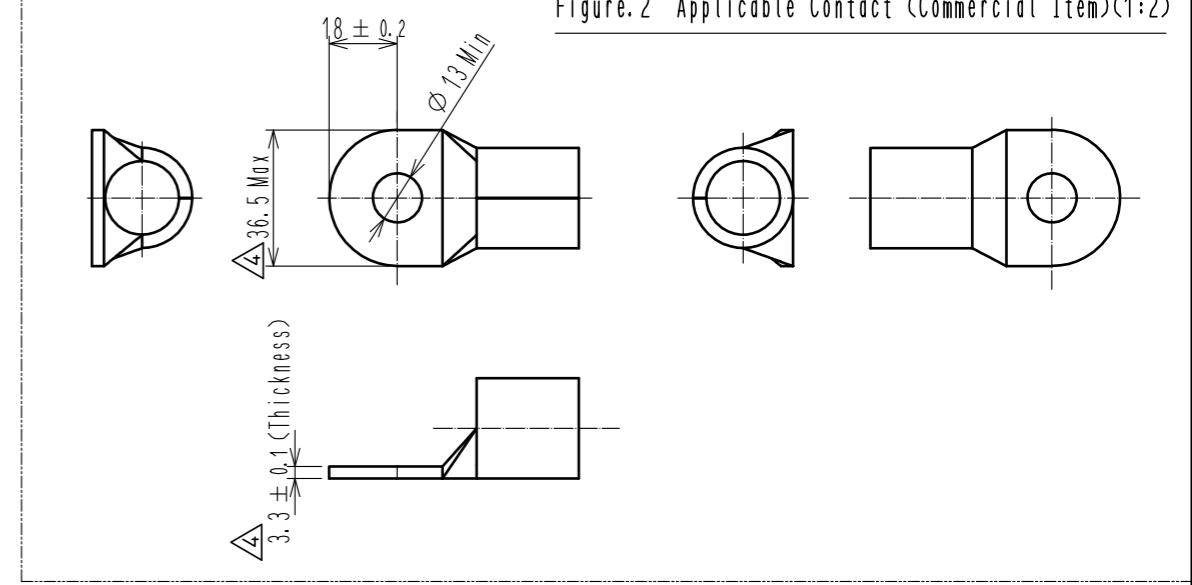
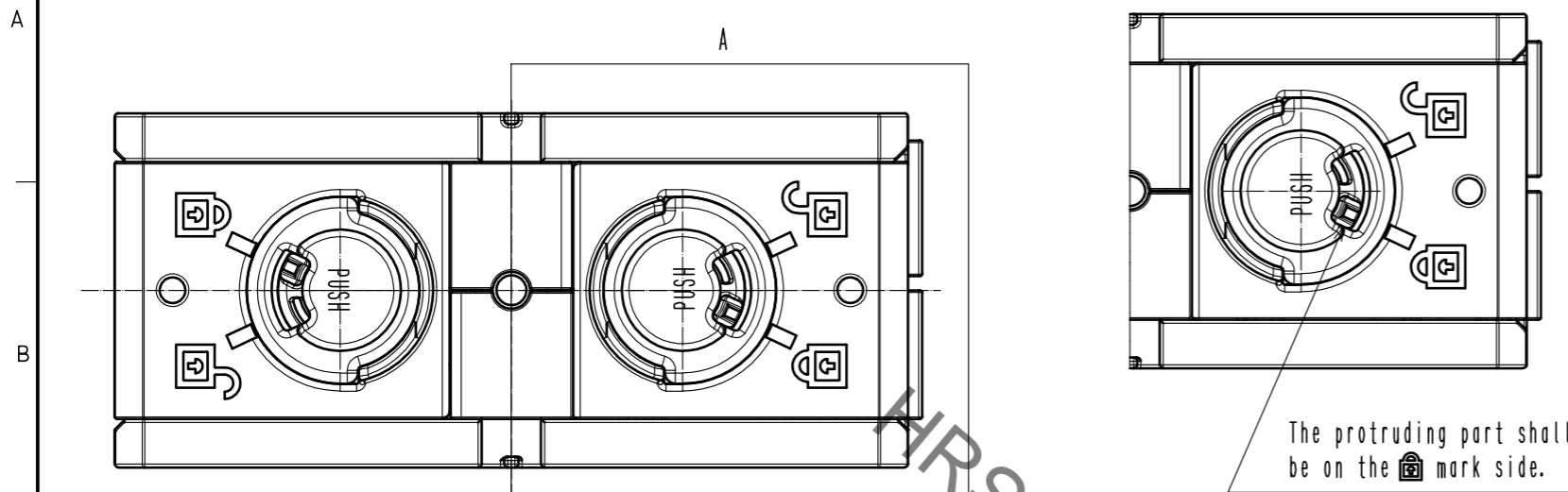


Jun.1.2020 Copyright 2020 HIROSE ELECTRIC CO., LTD. All Rights Reserved.
In case of consideration for using Automotive equipment / device which demand high reliability, kindly contact our sales window correspondents.

Figure.2 Applicable Contact (Commercial Item)(1:2)

A (Figure.1 Locked State External View)



- Notes
- Applicable crimp contact: NICHIFU CO.,LTD R150-12 or J.S.T.MFG.CO.,LTD R150-12 or a similar product.
 - Applicable crimping tool: JIS-C-9711 MAXELL IZUMI CO.,LTD REC-Li150 or REC-Li325.
 - Please assemble this product in coordination with the assembly manual ETAD-C0387-00.
 - When inserting the contact, please do so until Ref. No. ④ rotates back to its original position (shown in Figure.1 Locked State External View). Furthermore, lightly pull the cable to confirm that the contact is locked and mated.
 - Points to note before use:
 - Use only tin coated material.
 - Please check that dimensions satisfy those of Figure.2 and that there is no deformation, dirt etc., or abnormal contact resistance value.
 - Insertion and withdrawal forces, as well as contact resistance values could change due to the quality of the coating. Therefore, please evaluate beforehand.
- ⚠ Warning 6. This product is not hot pluggable.
⚠ Warning 7. Keep your fingers and other conductors from coming into contact with the electrically charged parts in order to avoid electrical shock or a short circuit.

| 4 | PBT | (Red)UL94V-0 | 8 | m-PPE | (Black) UL94V-0 |
|-------------------------------|-----------------|---------------------|------------------------------|-----------------|------------------|
| 3 | Stainless steel | | 7 | m-PPE | (Black) UL94V-0 |
| 2 | Copper | Tin plating 1μm min | 6 | PBT | (Black) UL94V-0 |
| 1 | m-PPE | (Black) UL94V-0 | 5 | Stainless steel | |
| NO. | MATERIAL | FINISH . REMARKS | NO. | MATERIAL | FINISH . REMARKS |
| UNITS | mm | SCALE | 1 : 1 | COUNT | 3 |
| DESCRIPTION OF REVISIONS | | | DESIGNED | CHECKED | DATE |
| DIS-C-00003704 | | | EK.KIDO | TP.KOMATSU | 20191210 |
| APPROVED : YH.YAMADA 20170130 | | | DRAWING NO. EDC-119468-00-00 | | |
| CHECKED : TP.KOMATSU 20170130 | | | PART NO. EF2-D250-1 | | |
| DESIGNED : HT.ZENBA 20170127 | | | CODE NO. CL142-0101-0-00 | | |
| DRAWN : HT.ZENBA 20170127 | | | 1/1 | | |