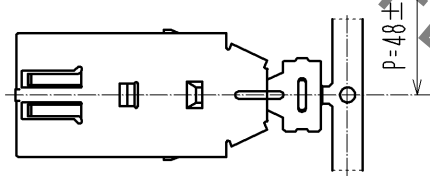
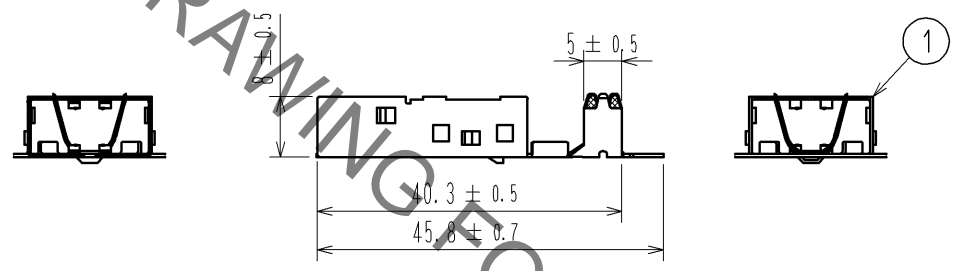
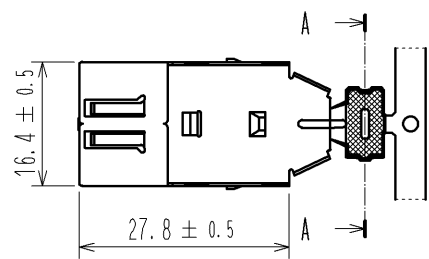
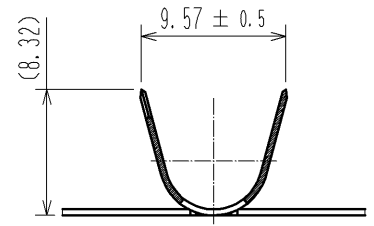


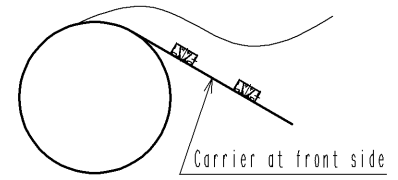
Jun.1.2020 Copyright 2020 HIROSE ELECTRIC CO., LTD. All Rights Reserved.
 In case of consideration for using Automotive equipment / device which demand high reliability, kindly contact our sales window correspondents.

ELV, RoHS COMPLIANT

A-A(2:1)



1 Reel direction



Note 1 Products direction
 2. Applicable cable ϕ 5.8~6.2mm

1	COPPER ALLOY	TIN PLATED	T=0.4				
NO.	MATERIAL	FINISH . REMARKS		NO.	MATERIAL	FINISH . REMARKS	
UNITS mm		SCALE 1 : 1	COUNT 	DESCRIPTION OF REVISIONS		DESIGNED	CHECKED
HIROSE ELECTRIC CO., LTD.		APPROVED : AR. SHIRAI	11. 09. 12	DRAWING NO.		EDC4-168932-00	
		CHECKED : NH. NAKATA	11. 09. 09	PART NO.		GT17HSK-4P-6CF	
		DESIGNED : KK. FURUKAWA	11. 09. 08	CODE NO.		CL767-0271-3-00	
		DRAWN : KK. FURUKAWA	11. 09. 08			1/1	