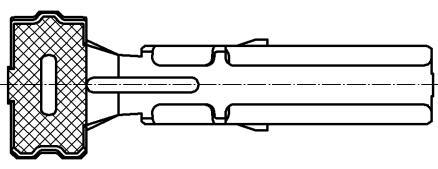
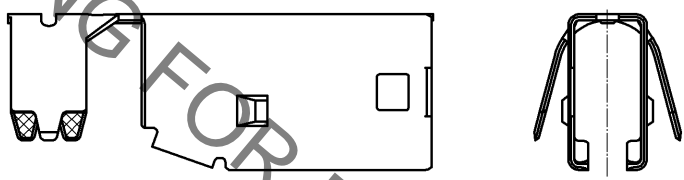
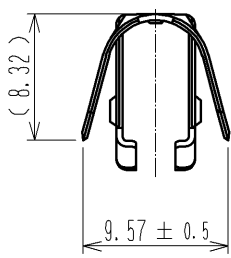
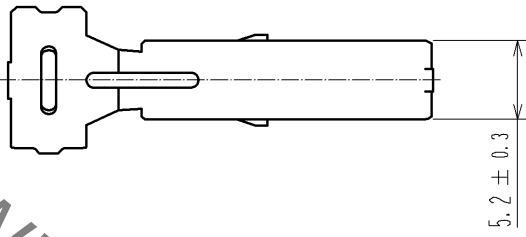
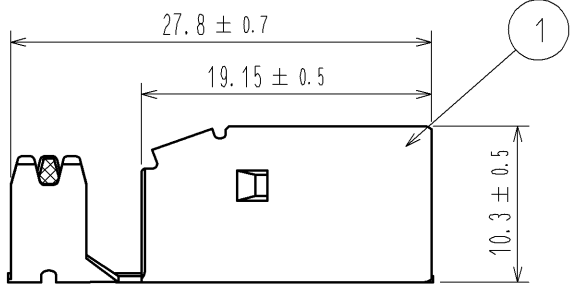


Jun.1.2020 Copyright 2020 HIROSE ELECTRIC CO., LTD. All Rights Reserved.  
 In case of consideration for using Automotive equipment / device which demand high reliability, kindly contact our sales window correspondents.

ELV, RoHS COMPLIANT



Note 1. Applicable cable  $\phi 5.8 \sim 6.2\text{mm}$

1	COPPER ALLOY	TIN PLATING	T=0.4					
NO.	MATERIAL	FINISH	REMARKS	NO.	MATERIAL	FINISH	REMARKS	
UNITS mm		SCALE 2 : 1	COUNT 	DESCRIPTION OF REVISIONS		DESIGNED	CHECKED	DATE
HIROSE ELECTRIC CO., LTD.	APPROVED	: AR. SHIRAI	11. 09. 12	DRAWING NO.		EDC4-168931-00		
	CHECKED	: NH. NAKATA	11. 09. 09	PART NO.		GT17HSK-4S-6CF		
	DESIGNED	: KK. FURUKAWA	11. 09. 08	CODE NO.		CL767-0270-0-00		
	DRAWN	: KK. FURUKAWA	11. 09. 08			1/1		