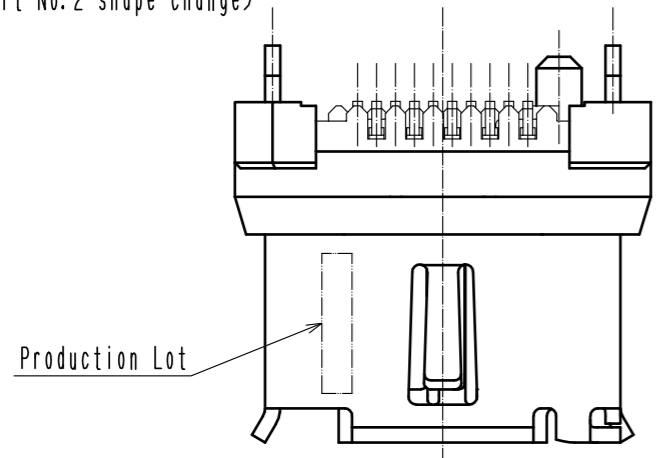
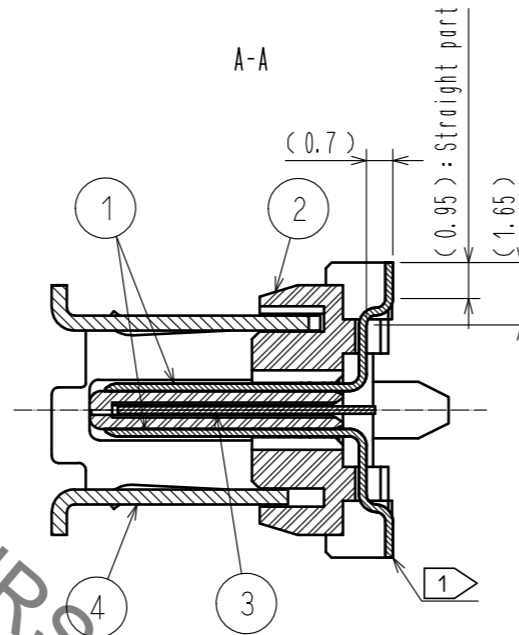


Jun.1.2020 Copyright 2020 HIROSE ELECTRIC CO., LTD. All Rights Reserved.  
In case of consideration for using Automotive equipment / device which demand high reliability, kindly contact our sales window correspondents.

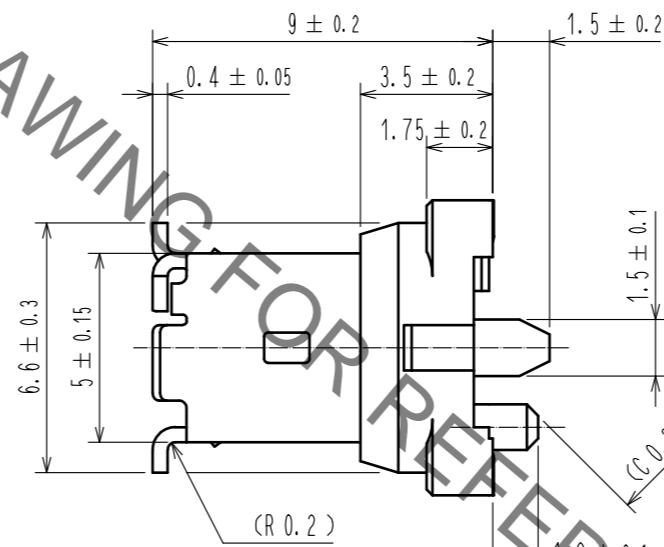
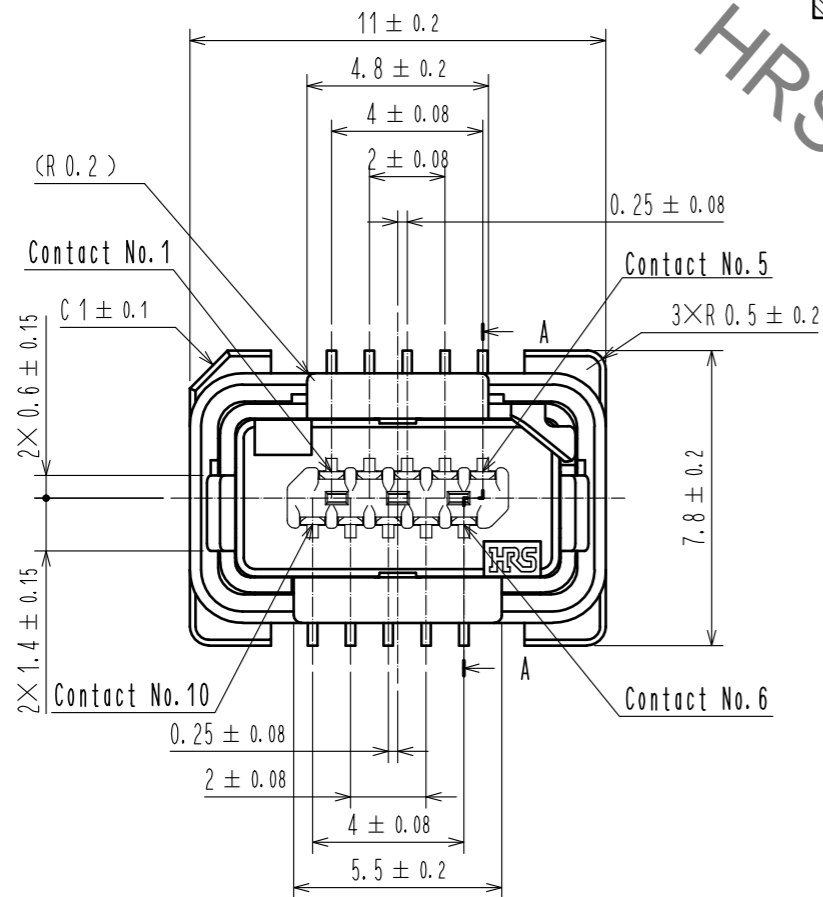
(Part No.2 shape change)



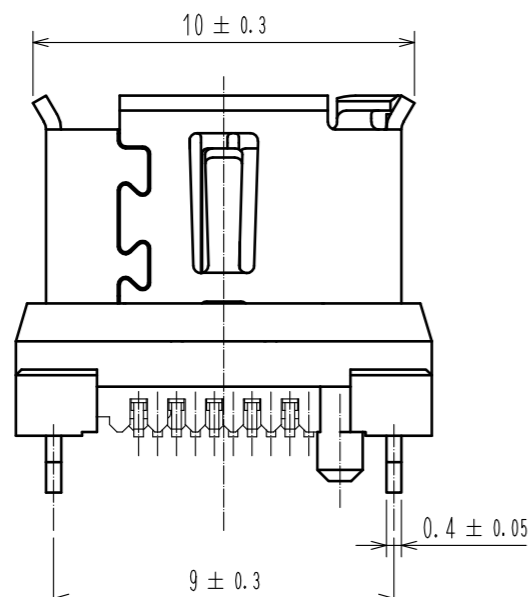
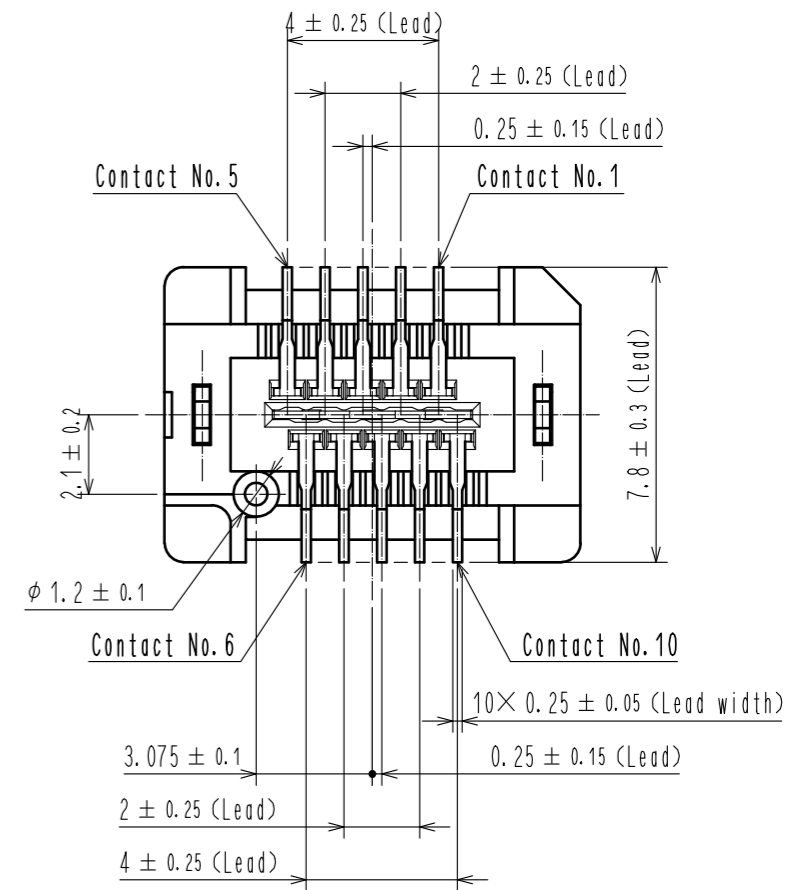
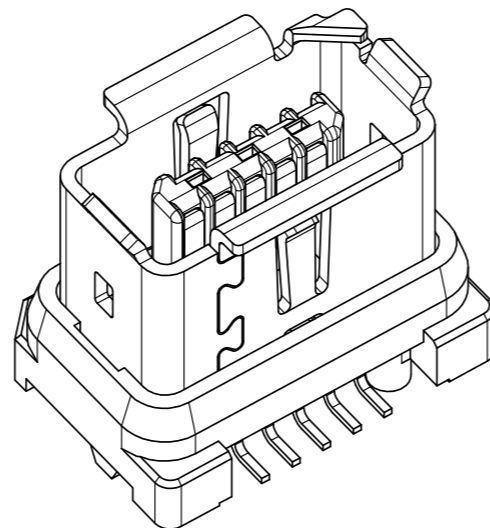
A-A



- Notes.
- 1 Co-planarity is within 0.1 mm.
  - 2 As for part No.4 the performance remains good though there might be a difference in the plating luster between each plating lots.
  - 3 Per reel : 450 pcs.  
The vacuum cap (part No.5) is attached to this product at delivery.
  - 4 Refer to the mated condition diagram for the panel thickness and layout.
  - 5 This product is mounted by reflow soldering.  
Refer to specification sheet ELC-129413-00-00 for reflow soldering.

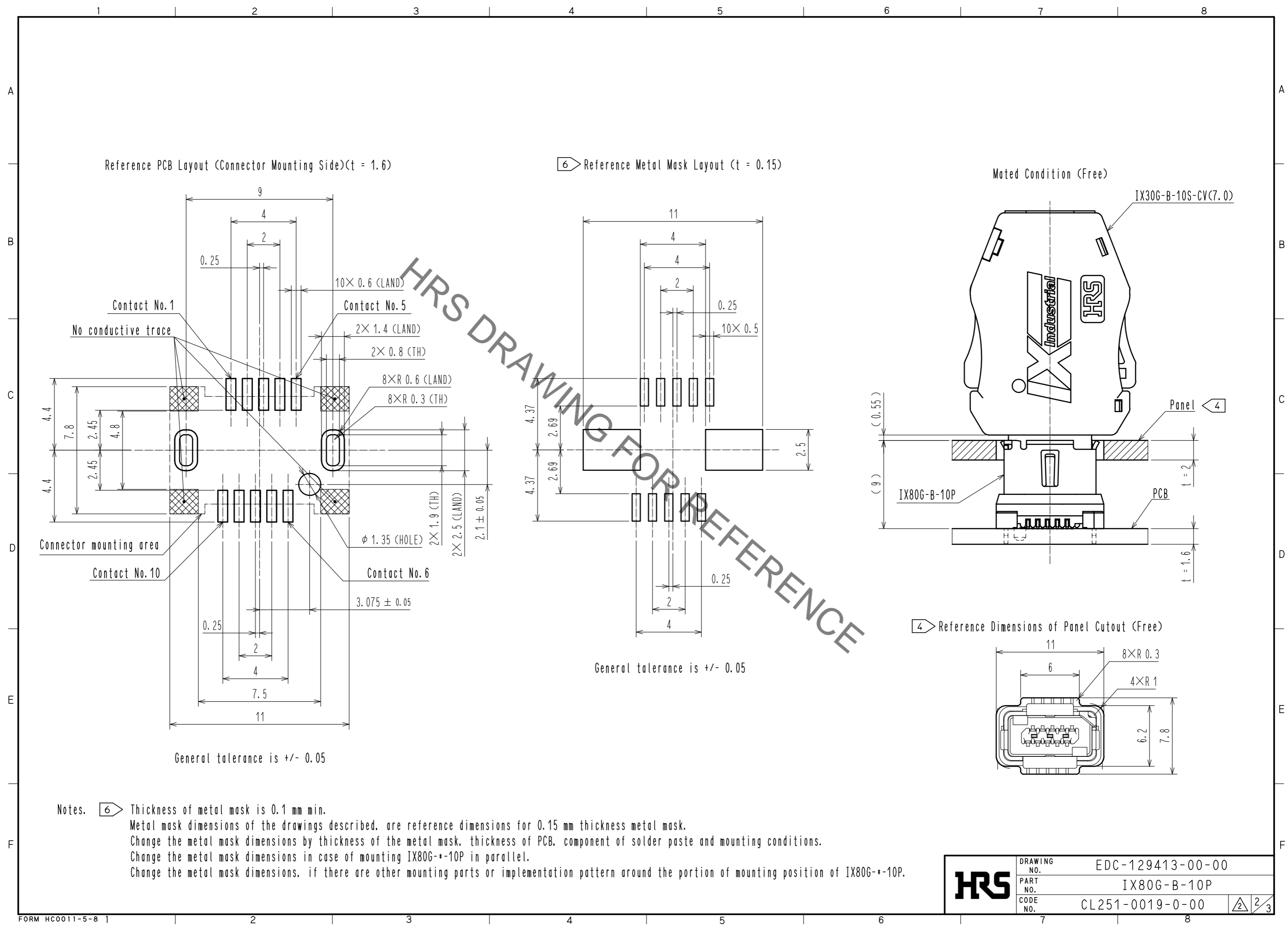


3D image



| 3                            | Stainless Steel |  | 7                    | PE                               |   |
|------------------------------|-----------------|--|----------------------|----------------------------------|---|
| 2                            | Polyamide       | Gray - UL94V-0   | 6                    | PS                               |   |
| 1                            | Copper Alloy    | Contact area : Gold 0.2 μm min.<br>Lead area : Gold 0.03 μm min.<br>Under plating : Nickel 2 μm min. | 5                    | Polyamide                        | Black - UL94V-0   |
|                              |                 |  | 4                    | Stainless Steel                  | Surface : Tin 1 μm min.<br>Under plating : Nickel 0.2 μm min. |
| NO.                          | MATERIAL        | FINISH . REMARKS   | NO.                  | MATERIAL                         | FINISH . REMARKS  |
| UNITS                        | mm              | SCALE 5 : 1  | COUNT 1              | DESCRIPTION OF REVISIONS         | DESIGNED KS. TAKAHASHI  |
|                              |                 |  |                      | DIS-E-00001787                   | CHECKED KI. NAGANUMA  |
|                              |                 |  |                      | APPROVED : RI. TAKAYASU 18.04.23 | DATE 18.09.11   |
|                              |                 |  |                      | CHECKED : KI. NAGANUMA 18.04.20  |   |
|                              |                 |  |                      | DESIGNED : YS. SAKODA 18.04.20   |   |
|                              |                 |  |                      | DRAWN : YS. SAKODA 18.04.20      |   |
| DRAWING NO. EDC-129413-00-00 |                 |  | PART NO. IX80G-B-10P |                                  |   |
| CODE NO. CL251-0019-0-00     |                 |  | 1/3                  |                                  |   |

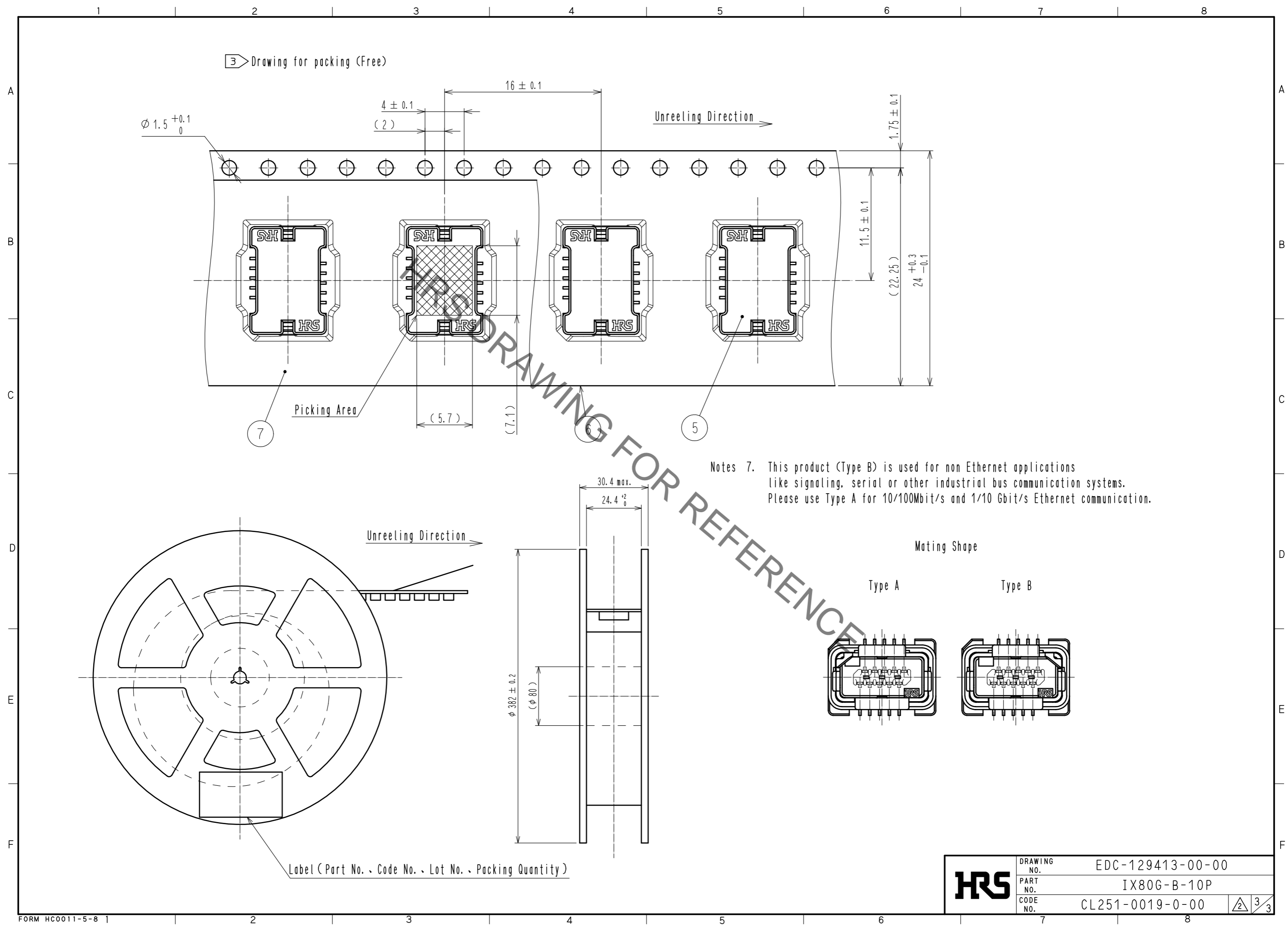
Jun.1.2020 Copyright 2020 HIROSE ELECTRIC CO., LTD. All Rights Reserved.  
 In case of consideration for using Automotive equipment / device which demand high reliability, kindly contact our sales window correspondents.



Notes. 6 Thickness of metal mask is 0.1 mm min.  
 Metal mask dimensions of the drawings described, are reference dimensions for 0.15 mm thickness metal mask.  
 Change the metal mask dimensions by thickness of the metal mask, thickness of PCB, component of solder paste and mounting conditions.  
 Change the metal mask dimensions in case of mounting IX80G-+-10P in parallel.  
 Change the metal mask dimensions, if there are other mounting parts or implementation pattern around the portion of mounting position of IX80G-+-10P.

|            |             |                  |   |
|------------|-------------|------------------|---|
| <b>HRS</b> | DRAWING NO. | EDC-129413-00-00 | <span style="border: 1px solid black; padding: 0 2px;">2</span> / <span style="border: 1px solid black; padding: 0 2px;">3</span> |
|            | PART NO.    | IX80G-B-10P      |   |
|            | CODE NO.    | CL251-0019-0-00  |   |
|            |             |                  |   |

Jun.1.2020 Copyright 2020 HIROSE ELECTRIC CO., LTD. All Rights Reserved.  
 In case of consideration for using Automotive equipment / device which demand high reliability, kindly contact our sales window correspondents.



3 Drawing for packing (Free)

Picking Area

7

(5.7)

(7.1)

5

Type A

Type B



|             |                  |
|-------------|------------------|
| DRAWING NO. | EDC-129413-00-00 |
| PART NO.    | IX80G-B-10P      |
| CODE NO.    | CL251-0019-0-00  |

3/3