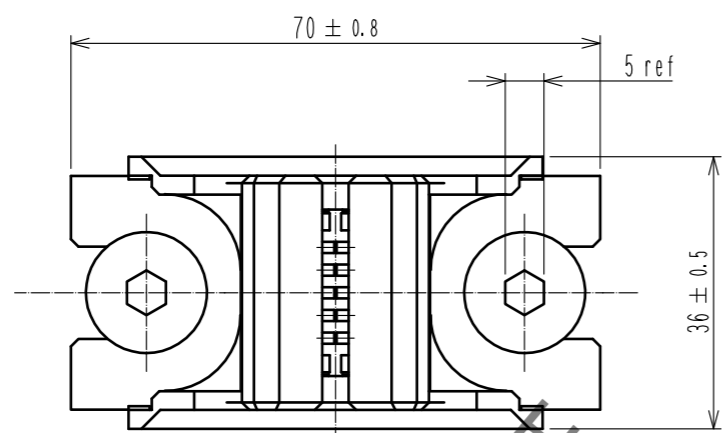
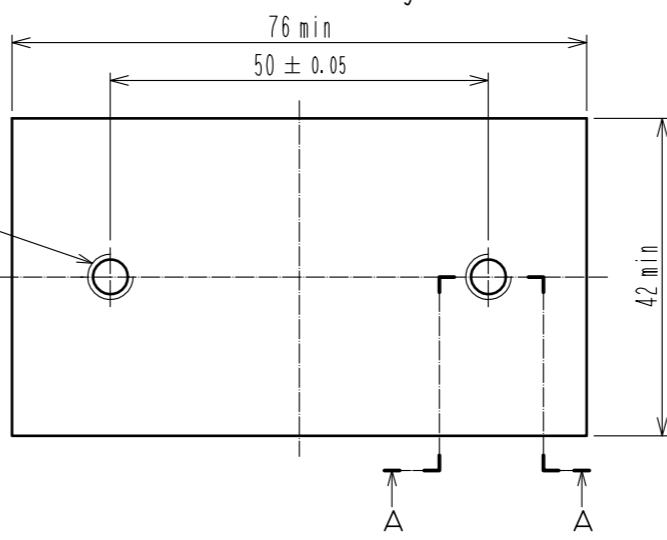


May.1.2020 Copyright 2020 HIROSE ELECTRIC CO., LTD. All Rights Reserved.  
In case of consideration for using Automotive equipment / device which demand high reliability, kindly contact our sales window correspondents.

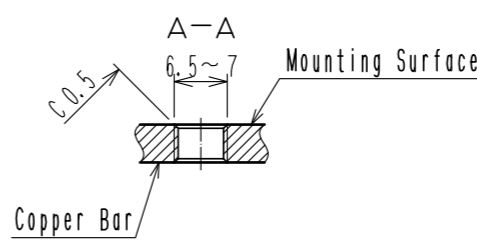
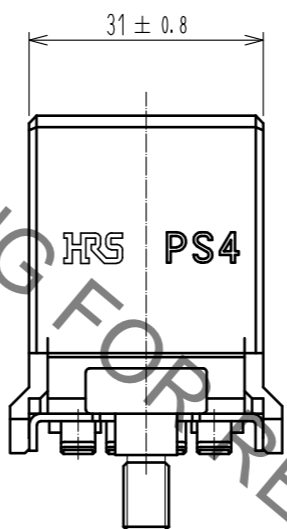
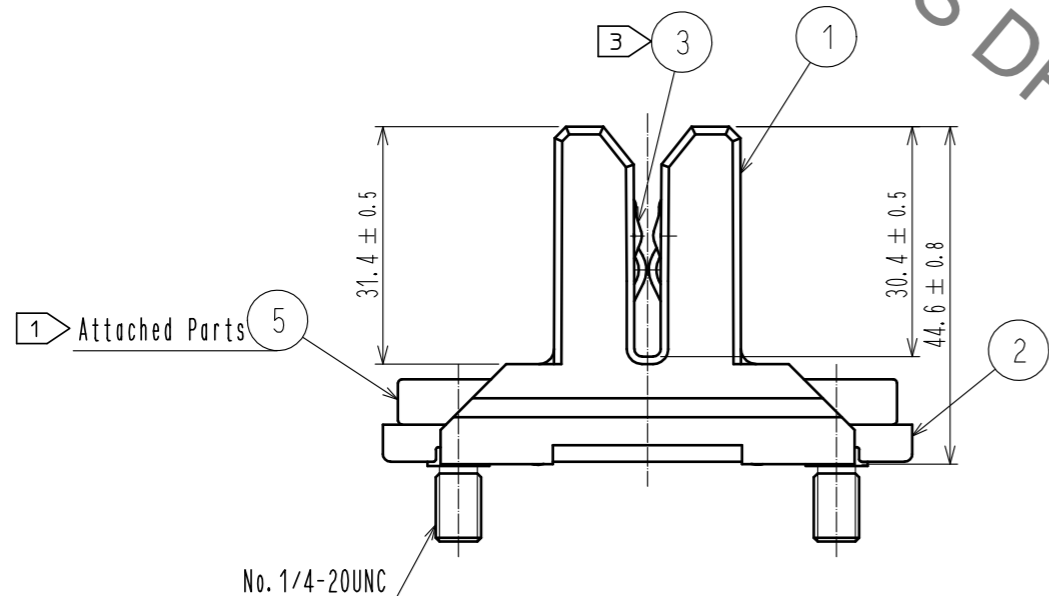
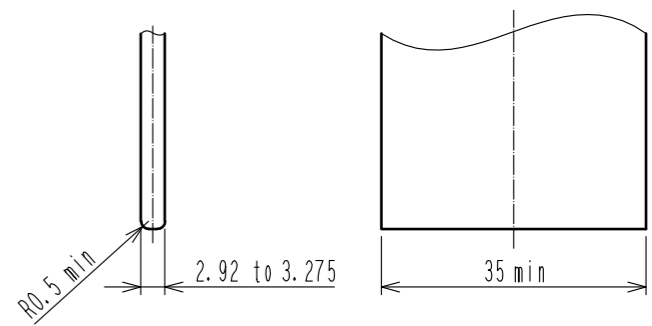


No. 1/4-20UNC  
Tapped through hole  
or depth 11mm min.

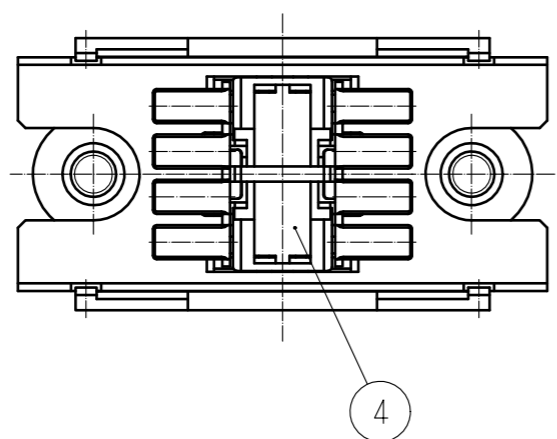
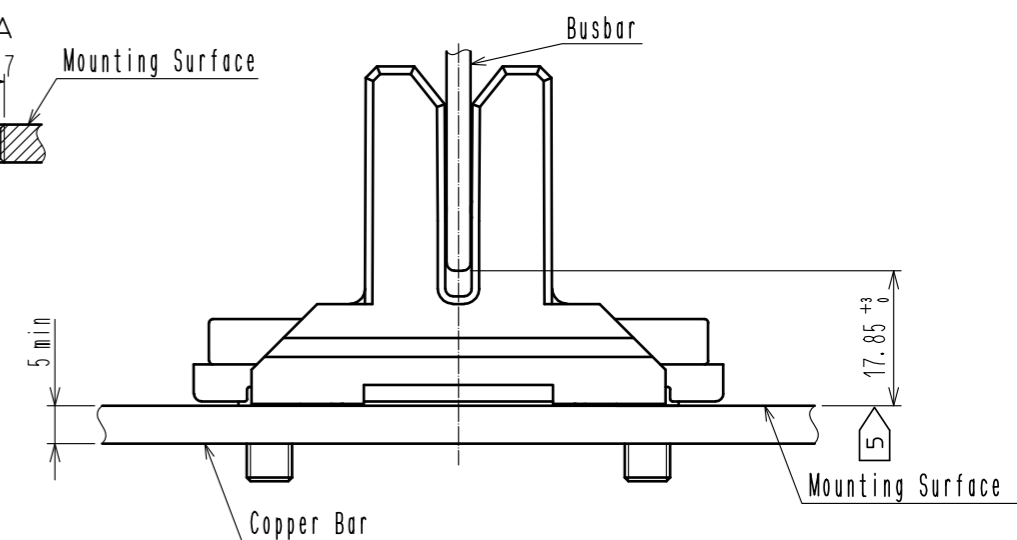
Copper bar Dimensions  
(connector mounting bar)



Busbar Dimensions  
(mating busbar)



View Of Mounting State



- Notes
- ① The recommended tightening torque for the Ref No.5 is 5 N · m.
  - ② This product has floating range of ±2mm from the center of the connector.
  - ③ There are some cases that plating color of Ref No.3 may change from silver to blackish brown due to chemical reaction by sulfre in the atmosphere.
  - ④ Busbar and copper bar shall be either silver plating.
  - ⑤ The recommended distance between installation site and tip of busbar shall be 17.85<sup>+0.3</sup> mm.

|                                   |                 |                  |                              |                           |                           |
|-----------------------------------|-----------------|------------------|------------------------------|---------------------------|---------------------------|
| 2                                 | Stainless Steel |                  | 5                            | Steel                     | Nickel Plating : 2μm min  |
| 1                                 | PBT             | Black. UL94V-0   | 4                            | PBT                       | Black. UL94V-0            |
|                                   |                 |                  | 3                            | Copper Alloy              | Silver Plating : 2μm min  |
| NO.                               | MATERIAL        | FINISH . REMARKS | NO.                          | MATERIAL                  | FINISH . REMARKS          |
| UNITS<br>mm                       |                 | SCALE<br>1 : 1   | COUNT<br>1                   | DESCRIPTION OF REVISIONS  |                           |
|                                   |                 |                  |                              | DESIGNED<br>MO. SHIMOYAMA | CHECKED<br>NM. NISHIMATSU |
|                                   |                 |                  |                              | DATE<br>16.11.15          |                           |
| APPROVED : RI. TAKAYASU 15.12.16  |                 |                  | DRAWING NO. EDC-128869-00-00 |                           |                           |
| CHECKED : NM. NISHIMATSU 15.12.15 |                 |                  | PART NO. PS4-3.175T          |                           |                           |
| DESIGNED : MO. SHIMOYAMA 15.12.15 |                 |                  | CODE NO. CL236-1012-0-00     |                           |                           |
| DRAWN : MO. SHIMOYAMA 15.12.15    |                 |                  | ② 1/1                        |                           |                           |