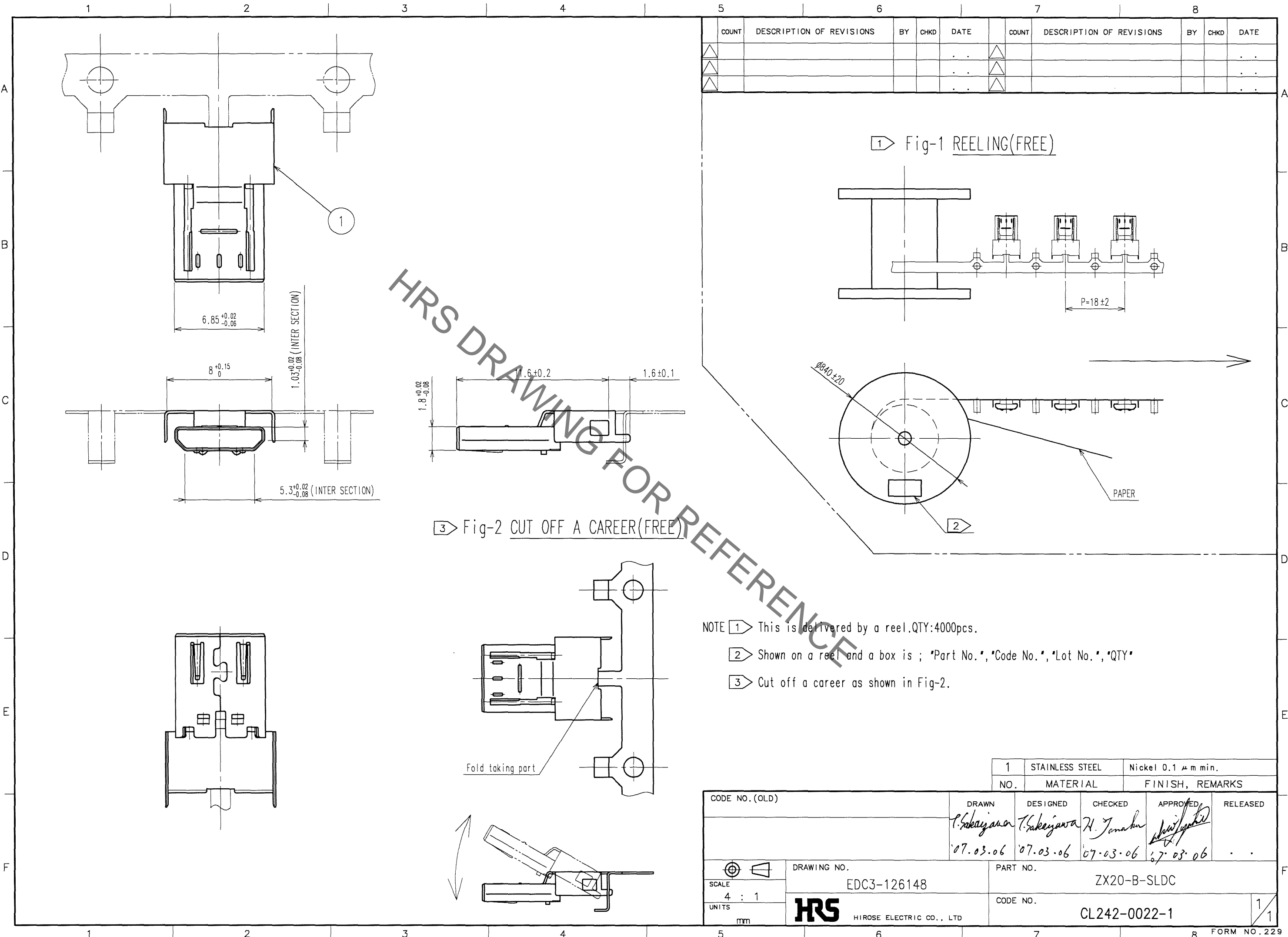


Jun.1.2020 Copyright 2020 HIROSE ELECTRIC CO., LTD. All Rights Reserved.  
In case of consideration for using Automotive equipment / device which demand high reliability, kindly contact our sales window correspondents.



COUNT	DESCRIPTION OF REVISIONS	BY	CHKD	DATE	COUNT	DESCRIPTION OF REVISIONS	BY	CHKD	DATE

1 Fig-1 REELING(FREE)

3 Fig-2 CUT OFF A CAREER(FREE)

- NOTE
- 1 This is delivered by a reel.QTY:4000pcs.
  - 2 Shown on a reel and a box is ; "Part No.", "Code No.", "Lot No.", "QTY"
  - 3 Cut off a career as shown in Fig-2.

1	STAINLESS STEEL	Nickel 0.1 μm min.
NO.	MATERIAL	FINISH, REMARKS

CODE NO. (OLD)	DRAWN P. Sakajawa '07.03.06	DESIGNED P. Sakajawa '07.03.06	CHECKED H. Tanaka '07.03.06	APPROVED <i>[Signature]</i> '07.03.06	RELEASED ..
DRAWING NO. EDC3-126148		PART NO. ZX20-B-SLDC			
SCALE 4 : 1		UNITS mm		CODE NO. CL242-0022-1	
<b>HRS</b> HIROSE ELECTRIC CO., LTD					

TO